

Yorke Peninsula's
**COPPER
COAST**

2025 VISITORS' GUIDE



YORKE PENINSULA – SOUTH AUSTRALIA

CONTENTS

WELCOME
PAGES 4-5

FEATURE ARTICLES
PAGES 6-17

HERITAGE & HISTORY
PAGES 18-19

DISCOVER KADINA &
WALLAROO MINES
PAGES 20-25

DISCOVER MOONTA,
MOONTA MINES, MOONTA BAY
& PORT HUGHES
PAGES 26-33

DISCOVER WALLAROO
PAGES 34-39

DISCOVER YORKE PENINSULA
& SURROUNDS
PAGES 40-41

EVENTS CALENDAR
PAGES 42-43

LOCAL SERVICES
PAGES 44-46

AREA MAPS
PAGES 47-51

Yorke Peninsula
Country Times

The Copper Coast 2024 Visitors' Guide is produced by the Yorke Peninsula Country Times. Words and photos are subject to copyright. We thank those who supplied images © South Australian Tourism Commission, Sarah King Photography, SA Media Gallery, Copper Coast Council, Jess Liddy, Lindsay Rover, Ian Archibald, Breanna Smith and Dylan Gaston — Apricot Skies Photography and Yorke Peninsula Country Times photographers Rod Penna and Matt Carty.

Welcome to the Copper Coast



Walleroo

Yorke Peninsula's Copper Coast is the perfect location to visit if you're looking to relax; we have beautiful white, sandy and safe swimming beaches, and great fishing and diving spots.

The ancestral home of the Nharangga people, the area is also steeped in colonial history, dating back to the peak of South Australia's copper mining days.

With a population of more than 15,000, the Copper Coast's main towns of Kadina, Moonta, Moonta Bay, Port Hughes and Wallaroo are just a 150 kilometre, 90-minute drive from Adelaide.

This is an ideal destination for day trips, short or long stays, and there are many attractions, accommodation and dining options.

Copper was discovered near what was to become Wallaroo Mines (Kadina) in 1859 and the now Moonta Mines in 1861.

Cornish miners and Welsh smelters soon made their way to Australia's Little Cornwall to extract and process the ore; the mines closed in 1923 and Moonta Mines was recognised as a National Heritage Site in 2017.

The Australian Cornish Mining Sites at Burra and Moonta were recently added to Australia's UNESCO World Heritage Tentative List.

Nowadays, the Copper Coast's prosperity is attributed to the wealth of the land which lends itself to a rich agricultural sector.

Great weather, beaches, fabulous fishing and all amenities, including upgraded boat ramps, make this a special place to visit and live.

Vibrant retail businesses and service providers support the local community and people visiting the area.

Enjoy a traditional Cornish pasty, coffee and cake, or a meal at one of the many cafes, bakeries or restaurants.

There are many things for you to experience in the area so please drop into or contact the accredited Copper Coast Visitor Information Centres located at 50 Mines Road, Kadina, or Blanche Terrace, Moonta, to plan your stay.

Helpful, friendly staff can provide you with all the up-to-date local information about what to see and do to make the most of your time visiting the Copper Coast.

Relax on the beach, catch some fresh seafood, enjoy the walking and cycling trails, have a game of putt putt, bowls or golf, or explore all the region has to offer.

We encourage you to take your time, escape everyday life and immerse yourself in this region that is "Inspired by lifestyle. Driven by possibility."

This is the 40th year of the Visitors' Guide and we hope it helps you experience all the Copper Coast has to offer.

- The Copper Coast Tourism and Events Team

#visitcoppercoast

Nharangga Dhura marni Nharangganu Banggara

"Nharangga people welcome you to Nharangga Country"

For tens of thousands of years, Nharangga people have lived in harmony with the spectacular lands of Yorke Peninsula. Their Country provided them with food, shelter, water, ceremony and a rich and vibrant culture. They welcome you to share their land and enjoy your stay on Nharangga Banggara.

- Tania Wanganeen, Nharangga Warra Wambana

The FARM SHED

MUSEUM & TOURISM CENTRE

50 Mines Road, Kadina
Phone 08 8821 2333
visit@coppercoast.sa.gov.au



The Farm Shed Heritage Museum

Explore the lives of those living in the 1900s through their homes, farms, town and mines
Guided Group and School Tours available

Open Monday-Friday 9am-5pm
Saturday, Sunday and
Public Holidays 10am-4pm



Country Getaways HOLIDAY RENTALS

Getaways to Yorke Peninsula



www.countrygetaways.com.au

(08) 8832 2623

- ✓ A one stop shop for accommodation all over Yorke Peninsula
- ✓ A huge variety - budget to deluxe ✓ Value for money experiences
- ✓ Professional cleans after every tenancy ✓ Local knowledge
- ✓ Easy booking process ✓ Online bookings ✓ User friendly website



HOLIDAY RENTALS
8832 2623
countrygetaways.com.au

World's largest Cornish Festival

Since 1973, the Copper Coast has been celebrating its Cornish heritage through the Kernewek Lowender (Cornish happiness). Plans are well underway for the 27th event, to be held May 12 to 18.

The week-long festival is held every two years and attracts enthusiastic crowds for events of all sizes — from the iconic Maypole and furry dances to fairs, street parties, Cornish pasty making and a cavalcade of classic cars and motorcycles.

Local families' ancestors are celebrated in dressing the graves ceremonies at four cemeteries, with a booklet produced to acknowledge the honourees' contributions to the community.

The Copper Coast's proud association with Cornish culture can be tracked back to the copper mining days of the mid to late 1800s/early 1900s.

Miners and their families travelled from Cornwall and elsewhere to work the copper deposits, and the Welsh, renowned for their smelting expertise, came to help process the ore.

In doing so, they became important settlers in the region, and the knowledge they brought with them was pivotal to the success of local operations.

When a group of locals decided to acknowledge that history by holding the first Kernewek Lowender in 1973, they could only have dreamed the festival would still be popular half a century later.

"Our success since the festival's inception is because of the support and involvement of the community and we will be engaging with everyone again to deliver a bigger and better event in 2025," Kernewek Lowender president Lynn Spurling says.

"It's a challenge every festival to try and retain the heritage and celebrate it in an appropriate manner, and to make it relevant to today's visitors."

Ms Spurling says the festival is a big component in Moonta Mines' recent international recognition through tentative World Heritage Listing.

Streets across the Copper Coast will be brightened by new banners, bunting and flags throughout the entire week.

New events officer Emily Barber will support the organising committee to ensure a successful Kernewek Lowender.

For more information, visit www.kernewek.org.



Have a field day on Yorke Peninsula



The oldest field days in Australia will be on again for young and old at Paskeville this spring.

The biennial event has a major focus on agriculture and the latest technology but there's plenty to interest people of all ages and backgrounds among the 600-plus exhibitors and a daily program of events.

The event is staged over three days — Tuesday, September 30, to Thursday, October 2 — on a 30 hectare site.

Along with extensive displays of the latest agricultural machinery and equipment, technology, information and services, there will be clothing, consumer goods, gourmet products, arts and crafts, homewares, camping goods, transportable homes and much more.

The program includes fashion parades, sheepdog demonstrations, sheep shearing and wool classing, guest speaker presentations, a vintage tractor pull and blacksmithing demonstrations.

Families are well catered for, with a fun trail, plus interactive and educational activities for children, a range of shady picnic areas and a playground plus a full range of food and drink options.



The YP Field Days are the biggest event on Yorke Peninsula.

"The field days bring about \$6m to our region every two years, through expenditure on accommodation, food, fuel and sales from exhibitors," YP Field Days chief executive Peter Anderson says.

"Each event involves about 100 volunteers, and we had over 20,000 people through the gates at our 2023 event, with most of them from metropolitan areas."

Regular visitors to the field days will notice a new office and toilet block built within shiny, circular corrugated iron silos, reflecting the success of agriculture on YP, one of Australia's most productive farming regions.

They form stage one of a project to transform the site, with the second stage to comprise a function venue to accommodate 100 people for seminars, workshops, conferences and even wedding receptions.

Yorke Peninsula Country Times returns as the major sponsor for the YP Field Days in 2025.

"We are thrilled about continuing our valued partnership with the field days and look forward to supporting this leading event," managing director Michael Ellis says.

Site application information will be available via www.yppfielddays.com.au from March 1.

Stay up to date with event information via the YP Field Days website and Facebook page.



Copper Coast cycling and walking trails



Discover the Copper Coast's scenic shared cycling and walking trails that link Moonta, Wallaroo and Kadina.

Following historical railway lines, these trails stretch 17 kilometres between Moonta and Wallaroo and eight kilometres from Wallaroo to Kadina.

For more detailed trail information, see entries in each town's section.

Moonta Bay, Moonta and Port Hughes are also connected by safe, convenient shared pathways, perfect for leisurely

strolls or bike rides.

The Coast Road Shared Path is underway, with Stage 1 connecting Bay Road to Rossiter's Road in Moonta Bay. Once finished, this path will seamlessly link Moonta Bay with Port Hughes.

Why not learn more about the historical Copper Coast region and walk, ride or drive around one of the heritage trails?

Drop into the Copper Coast Visitor Information Centres at Kadina and Moonta or Wallaroo Heritage and Nautical Museum and pick up a pamphlet showing the many trails available.

Walk

Moonta Heritage Walk

Many of Moonta's buildings were erected between 1863 and 1875, with most of these retaining their authentic shopfronts and verandahs. The Moonta Heritage Walk starts and finishes at the Moonta Town Hall and covers many of the town's shops, hotels, banks, the post office, meeting halls and several residences.

Elders Loop Trail

The 3.2 kilometre Elders Loop Trail begins at Moonta Mines Museum, heads east to Richmans Enginehouse and onto Taylors Shaft and Hughes Enginehouse, before looping back to the museum. There is interpretative signage at the main sites and way-finding signage dotted along the trail.

Kadina Heritage Walk

This walk takes in many historical sites including the town hall, churches, hotels and banks. The trail starts and finishes at the heritage-listed town hall and gives visitors an impression of the history and development of Kadina.

Wallaroo Heritage Walk

This walk covers the town centre and various buildings, commercial and public, dating back to 1861. Most of the buildings along the Owen Terrace streetscape were constructed between 1864 and 1900, though their uses have changed significantly over time.

Wallaroo Smelters Trail

At the base of the Hughes chimneystack near the Wallaroo foreshore is the Wallaroo Smelters Trail. This is a short walk with interpretive signs explaining the early smelting history of Wallaroo.

Wallaroo Avenue of Honour

Located next to the Wallaroo Town Hall, this trail pays tribute to residents who lost their lives at war.

Drive

Kadina Heritage Trail

The trail starts at the old Railway Station and is a leisurely drive of about 12 kilometres which can be completed easily in less than two hours. The trail gives visitors a balanced impression of the history and development of Kadina and surrounding settlements.

Moonta Heritage Trail

A relaxed drive, covering about 16 kilometres, the Moonta Heritage Trail starts and ends at the Moonta Town Hall and can be completed in two hours or less. The trail gives visitors an enjoyable and well-rounded tour of the history and development of Moonta and adjacent settlements.

Wallaroo Heritage Trail

Starting at the Wallaroo Heritage and Nautical Museum, this trail is an easy drive of about nine kilometres which can be completed easily in less than 90 minutes. The trail passes many sites of historical interest and gives visitors an impression of the history and development of Wallaroo.

Making a splash with daybreak

"nippy dips"



Health and wellness are making a splash on the Copper Coast, with locals embracing the benefits of cold-water exposure through weekly ocean swims.

Research and personal experiences suggest cold-water dips can enhance physical, mental and emotional wellbeing, by boosting circulation, reducing stress and improving mood.

There are two groups which meet up for regular "nippy dips" in Wallaroo and Port Hughes, usually combining the invigorating ocean plunge with a social coffee and chat afterwards at nearby cafes.

The Salty Ice Dip Ocean Swims group gathers at Office Beach, Wallaroo, every Friday at 7am, while the Port Hughes Plunge group wades in at South Beach, Port Hughes, every Thursday from 6.15am.

Both groups welcome drop-ins and are active on social media, where you can check up-to-date meeting times — everyone is welcome!

Cold water exposure benefits

Anecdotal evidence and scientific research suggest cold-water exposure offers numerous physical, mental, and emotional benefits.

- Instant boost in focus, clarity and wakefulness
- Improves mood and immediate energy boost
- Lowers inflammation
- Boosts the immune system by activating the production of white blood cells
- Builds stress resilience
- Boosts brown fat (the good fat)
- Boosts metabolism
- Boosts dopamine
- Boosts noradrenaline
- Improves sleep
- Trains the cardiovascular system
- Improves blood circulation
- Strengthens the brain against ageing
- Assists in weight loss



Your Local Bike Shop
40 George Street, Moonta
Mob: 0447 764 777

- E-Bike and Bicycle Sales
- Hire & Self Guided Tours
- Service & Repairs
- Accessories and Parts

BREATHE TO BELIEVE
Yoga, Pilates, Barre and holistic healing sessions with Kim
Call 0400 184 532 for more information or check out my Facebook page

COPPER COAST
sport and leisure centre

EXERCISE YOUR WAY

ADD A LITTLE MORE MOVEMENT TO YOUR DAY

- Health Club
- Group fitness
- Hydrotherapy and swimming lessons
- Four-court stadium
- Squash courts
- Meeting/function rooms
- Café

1 DOSWELL TERRACE KADINA 8821 3106 [facebook](#) FOR UPDATES & SPECIALS



Splash Town



North Shores Playground

Fun for the whole family



New Town Playground

The Copper Coast truly offers something for everyone.

Families will find a fantastic array of activities, perfect for all ages and interests.

Whether your children are toddlers or teens, or you're bringing along your furry friends, you'll be spoiled for choice.

From exploring scenic parks and pristine beaches to diving into the region's rich history or simply unwinding in beautiful surroundings, the Copper Coast has it all for a memorable getaway.

Copper Coast Council tourism coordinator Lynn Spurling says the area is incredibly fortunate to have so many wonderful spaces for families to enjoy.

"If you're after a thrill, the updated New Town Playground, in Kadina, will be a hit with your little adventurers thanks to a new four metre slide," she says.

"And if that's not enough you can venture to the Walk in the Trees at Victoria Square, Kadina, and check out the Train Park just a stone's throw away.

"Kadina also features putt putt mini golf

and an indoor play centre, conveniently located at the Information Centre.

"For the nature lovers, McCauley and Victoria Parks, in Moonta, are great for exploring or just relaxing under the trees — you could even hire a bicycle from Wallaroo Marina Apartments or an e-bike from Copper Trails Bike Hire in Moonta to get around more quickly.

"Be sure to check out Moonta Bay's free water park, Splash Town, over the warmer months too!"

Wallaroo's Maritime Museum is a must for history and sea lovers alike; the jetty and beaches are within walking distance, as well as the Wallaroo Adventure Park.

"Tarnasey Farm, in Wallaroo, also provides a great day out with little farmer tours and unique accommodation on offer," Lynn says.

"We haven't forgotten about your four-legged friends — there are dedicated dog parks in Wallaroo, Moonta and Kadina."

Whatever your family's interests, the Copper Coast is the perfect destination for your next holiday.



Tarnasey Farm



Queen Square, Moonta



Wallaroo dog park



SPLASH TOWN – COPPER COAST

Free entry to a whole lot of fun!

Splash Town offers a safe swimming enclosure, racer slides, water mushrooms, wading pools, changing and toilet facilities.

Check Facebook for opening times and other information.

Bay Road, Moonta Bay 8821 2333
visitcoppercoast.com.au





SELF-CONTAINED 2-BEDROOM CABIN ACCOMMODATION
Book online through our website
Fully interactive farm experience for children and adults

0432 268 004 LOCATED BETWEEN KADINA & WALLAROO
check us out at www.tarnaseyfarm.com

Stay engaged with local Yorke Peninsula news each week

• NEWS • SPORT • COMMUNITY EVENTS
READ IT YOUR WAY - PRINT OR DIGITAL

Country Times www.ypct.com.au
Phone: 8821 1155



Copper Coast PUTT PUTT

Open daily 10am to 4pm
(closed Good Friday & Christmas Day)
\$5pp to play
Located at the
Copper Coast Visitor Information Centre
50 Mines Road, Kadina
Phone 8821 2333

COPPER COAST INDOOR PLAY CENTRE

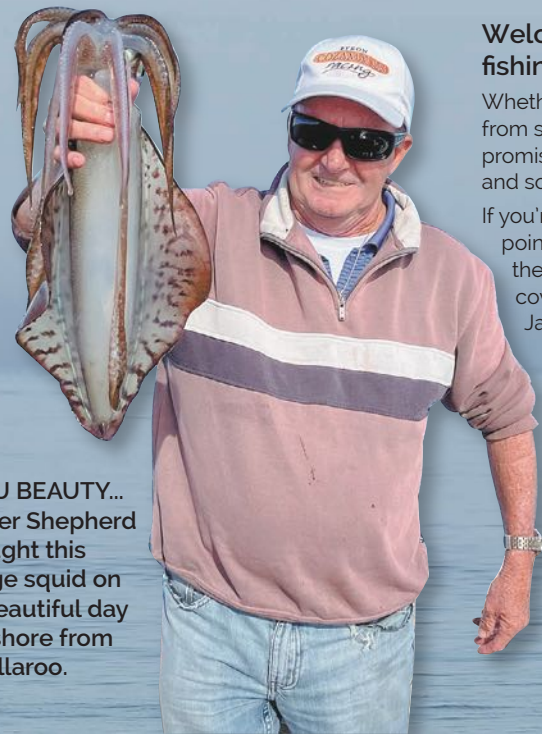


50 Mines Road Kadina 8821 2333

Open daily 10am-4pm
(ex. Good Friday and Christmas Day)
Under 12 months FREE
1-2 years \$4; 3-10 years \$6
Don't forget to wear socks!

GREAT FUN FOR THE WHOLE FAMILY!

Fishing the Copper Coast



YOU BEAUTY... Peter Shepherd caught this huge squid on a beautiful day offshore from Wallaroo.

Welcome to South Australia's fishing paradise!

Whether by boat, off the jetty, or casting from shore, fishing along the Copper Coast promises a fantastic experience for families and solo anglers alike.

If you're unsure where to begin, need a few pointers, or just want to help the kids get their first catch, this guide has you covered. Local fishing expert Greg James (gregjamesfishing.com.au) has

drawn on his 50 years of fishing know-how to collate the following advice for anyone thinking about trying their luck with a fishing line.

Fishing the Copper Coast is seasonal so have a look at the accompanying calendar to work out what species you're likely to land and at what time of year.

Local fishing tackle stores are a great place to find out all the latest information, tips and where the fish are biting.



Bag limits and size restrictions

AUSTRALIAN HERRING (TOMMY RUFF)

No minimum size

40 PERSONAL DAILY BAG LIMIT

120 Daily boat limit when 3 or more people are fishing on board

BLUE SWIMMER CRABS

Minimum size: 11 cm between the largest spines

20 PERSONAL DAILY BAG LIMIT

60 Daily boat limit when 3 or more people are fishing on board

BAITING When using hoop nets or drop nets in marine waters (including from a jetty or boat) you:
 ✓ **can** use fish or fish-based products in hoop nets or drop nets
 ✗ **cannot** use any type of meat, chicken or other poultry in hoop nets or drop nets

RESTRICTIONS Females with external eggs must be returned to the water immediately

SOUTHERN GARFISH

Minimum size: 23 cm from tip of the upper jaw to the tip of the tail

30 PERSONAL DAILY BAG LIMIT

90 Daily boat limit when 3 or more people are fishing on board

KING GEORGE WHITING

Minimum size: 32cm from tip of snout to tip of tail

10 PERSONAL DAILY BAG LIMIT

30 Daily boat limit when 3 or more people are fishing on board

POSSESSION LIMIT is one of the following:

72 fish, 10kg of fillets, or 36 fish and up to 5kg of fillets when a person has both fish and fillets

SOUTHERN CALAMARI

No minimum size

15 PERSONAL DAILY BAG LIMIT

45 Daily boat limit when 3 or more people are fishing on board

YELLOWFIN WHITING

Minimum size: 24cm from tip of snout to tip of tail

20 PERSONAL DAILY BAG LIMIT

60 Daily boat limit when 3 or more people are fishing on board

Best fishing spots

- **Blue swimmer crabs:** Wallaroo, Moonta Bay and Port Hughes jetties, Myponie Point, Wallaroo Bay, Warburto Point, West Light, Cape Elizabeth, Moonta Bay, Tipara Reef, Tickera, Bird Island
- **Tommy ruff (Australian herring):** Wallaroo, Moonta Bay and Port Hughes jetties
- **Garfish:** Point Riley, Bird Reef, Moonta Bay, Wallaroo Bay, Tipara Reef; Moonta Bay and Port Hughes jetties
- **King George whiting:** West Light, Port Hughes, Ballast and Boiler Grounds (Wallaroo), Cape Elizabeth, Steamer channel, Rifle Butts Beach, Tipara Reef, Point Riley, Myponie Point
- **Yellowfin whiting:** Coopers Beach, Tickera, Port Hughes, Office Beach, Rifle Butts Beach, Second Beach
- **Squid:** Point Riley, Port Hughes, Wallaroo, Moonta Bay and Port Hughes jetties, Moonta Bay

Best baits

- **Blue crabs:** Fish heads and frames
- **Tommy ruff (Australian herring):** Gents, small cockles, fish flesh
- **Garfish:** Gents, small cockles/pipis
- **King George whiting:** Softened squid, cockles/pipis, clickers
- **Yellowfin whiting:** Bloodworms, cockles/pipis, clickers
- **Squid:** Jigs (lures), small whole fish or a peeled potato on a jig

Always use fresh bait. Most bait from retail outlets is frozen; it is important it has only been frozen once, not thawed and refrozen.

It is always a good idea to use a limited amount of berley to attract fish; it acts like a scent and can be bought from most retail fishing tackle stores.

Keep it cool

Keeping your catch cool and moist until you are ready to clean them, particularly in the warmer months, is paramount. An ice slurry (thick mix of saltwater and ice in an esky) is ideal. Alternatively, place a wet towel or hessian bag over the catch.

SNAPPER BAN

A total snapper fishing closure applies in Spencer Gulf and Gulf St Vincent until June 30, 2026. The targeting, taking and possession of snapper is prohibited; fines and penalties apply.

Fishing rules

Keep up to date with the latest fishing rules, regulations and closures by downloading the free South Australian Recreational Fishing Guide smartphone app at pir.sa.gov.au/recfishingapp. Importantly, there are size, bag and boat limits for all species; see pir.sa.gov.au/recreational_fishing/rules. Also, before you go out on a boat or other marine craft, make sure you've had a look at marinesafety.sa.gov.au/.

SEASONAL FISHING CALENDAR

JANUARY-MARCH	APRIL-JUNE	JULY-SEPTEMBER	OCTOBER-DECEMBER
Tommy ruff/herring	Tommy ruff/herring	Tommy ruff/herring	Tommy ruff/herring
Red mullet	Red mullet	Red mullet	Mullet
Mullet	Mullet	Mullet	Red mullet
Salmon/salmon trout	Salmon/salmon trout	Bream	Garfish
King George whiting	King George whiting	Mackerel	Mackerel
Yellowfin whiting	Flathead	Salmon trout	Salmon/salmon trout
Blue swimmer crabs	Garfish	Snook	Snook
Sand crabs	Squid	Flathead	Flathead
Velvet crabs	Mulloway	Garfish	King George whiting
Snook	Mackerel	Bream	Yellowfin whiting
Garfish	Bream	Red nannygai	Blue swimmer crabs
Flathead	Trevalley	King George whiting	Sand crabs
Bream	Sweep	Yellowfin whiting	Velvet crabs
Squid	Kingfish	Squid	Squid
Mulloway	Red nannygai	Blue swimmer crabs	Kingfish
Trevalley		Sand crabs	Mulloway
Red nannygai		Velvet crabs	Red nannygai
Sweep		Trevalley	Southern rock lobster
Southern rock lobster		Kingfish	Trumpeters
Trumpeters			



SAWLEY'S

AUTO & MARINE



Marine and automotive retail products
 Marine servicing/repairs
OUTBOARD INBOARD JETSKI
 Large vessel retrieval and maintenance
ANTIFOUL PROPSPEED RE-POWERING
 Automotive servicing - 4x4 upgrades and fit-outs







WWW.SAWLESAUTOANDMARINE.COM.AU
 PHONE 0412 532 984 | 33 KENNETT STREET, KADINA



FULL DAY CHARTERS
 - FULL BOAT HIRE -
 4-8 PASSENGERS
 POA FOR UNDER 4
 PASSENGERS
 ALL BAIT, TACKLE +
 ICE PROVIDED
 KEEP YOUR CATCH

"COM'N GET YOUR ROD BENT!"

0418 859 431   

PORTHUGHESCHARTERS@GMAIL.COM

JOIN US FOR A FUN FISHING EXPERIENCE!



MARINE
 PORT ROAD, KADINA 8821 2604
WWW.YPMARINE.COM.AU



MAITLAND MARINE SERVICES
 ELIZABETH STREET
MAITLAND
 8832 2113
www.maitlandmarine.com.au





An artistic expression

As Copper Coast's public art installations continue to build, visitors and locals can easily spend the day exploring them.

Copper Coast Council has developed art trail brochures for each of the three main towns, which are available through the visitor information centres or online at <https://visitcoppercoast.com.au/arts-and-culture>.

"These trails identify public art pieces and enable everyone to discover and appreciate our talented local artists." Copper Coast Council tourism coordinator Lynn Spurling says.

"The art trails offer the opportunity to experience a wide range of art by our talented local artists and artisans."

New art in Wallaroo includes a bright beach mural on Hughes Street, a huge squid painted on the wall of the museum, and the theme of the silo light show is updated every three months.

Kadina has introduced impressive large-scale Indigenous artworks in the library and at Kadina Memorial School, plus a tribute to servicepeople at the veterans' centre.

Keep an eye out for fairy doors and a photo board in Victoria Square as well as murals in Graves, Hallett and Goyder Streets.

The town centre also features a huge painting on the old water tower, a nod to the region's copper mining and Cornish past.

Moonta boasts several photo boards, memorial trails, cultural artworks, historical murals and sculptures, including of local icon and founder of the RAAF, Sir Richard Williams.

These are just a few of the opportunities to enjoy public art on the Copper Coast, which also has several indoor art spaces well worth visiting.



Kadina water tower mural

Public art in the Copper Coast

Kadina

Water tower mural, Kadina Jewellers mural, fairy doors on businesses throughout the CBD, butterfly wings on the side of Hello World Kadina, stobie pole art and other features at/near Kadina Memorial School, Cracked Pepper mural, Copper Coast Surf blue wave, veterans' centre mural, library mural, Ascot Art Gallery.

Moonta

Sir Richard Williams statue, wombats and mosaic seat in Queen Square, Cousin Jack and Jenny mural on Queen Square toilet block, rainbow mural on Nook and Nourish cafe. Moonta Bay mural near the barbecue area, silhouettes on many street signs, mural at Ellen Street car park, George Street mural, Moonta Area School's Japanese cultural artwork, McCauley Park wood carvings and steel animals, School of Mines mural, Robert Street Rosella mural, old billiards mural on Ellen Street, Moonta Gallery of the Arts.

Wallaroo

Wallaroo Silo Light Show, Wallaroo heritage mural, Wallaroo Primary School wall mural, sculpture out from Heritage Drive, mosaics on the foreshore paths, Wildman Street mural, Jones Street mural, Hughes Street mural, Cutter Canberra, Wallaroo Heritage and Nautical Museum, North Beach murals, anchor sculpture, Heritage Drive granite and copper sculpture, Owen Terrace artwork.



Kadina



Wallaroo



Moonta



Moonta

WALLAROO SILO LIGHT SHOW

NIGHTLY SHOW ON THE WALLAROO SILOS AFTER SUNSET

(20 minute countdown before the show)
Best viewing from Jetty Road
Tune in to 88.3 FM for audio

Year Round Show Times

MONTH	COUNTDOWN BEGINS	SHOW STARTS
January	8.40pm	9pm
February	8.25pm	8.45pm
March	7.55pm	8.15pm
April (DS Time)	7.25pm	7.45pm
April (Non D/S)	6.10pm	6.30pm
May	5.40pm	6pm
June	5.25pm	5.45pm
July	5.40pm	6pm
August	6.10pm	6.30pm
September	6.25pm	6.45pm
October (Non D/S)	6.25pm	6.45pm
October (DS time)	7.55pm	8.15pm
November	8.25pm	8.45pm
December	8.40pm	9pm

THE ASCOT

VISUAL ART EXHIBITION
KERNEWEK LOWENDER ART PRIZE COLLECTION
ASCOT COMMUNITY LOUNGE
COPPER COUNTRY KEEPSAKES

48 Graves Street, Kadina

OPEN MON-FRI 10AM-4PM (SEP-MAY); 10AM-3.30PM (JUN-AUG)

MOONTA GALLERY OF THE ARTS

Open daily 11am-3pm
Corner George and Henry Streets, Moonta
Email moontagalleryarts@coppercoast.sa.gov.au

Paint and Sip kits available from Seaside Treasures Art

Will deliver to accommodation, or caravan parks on the Copper Coast.
Canvas, paints, picture templates and brushes included (min order 4).
Great for vacation activity, girl's night, date night, hen's night, baby showers,
EOY gatherings, team building, work retreats, or other special events! Kits \$35-\$40pp
Phone 0429 136 533 Email seasidetreasuresart@gmail.com Instagram [SeasideTreasuresArt](https://www.instagram.com/SeasideTreasuresArt)

Exploring our heritage

Moonta Mines is one of Australia's most important industrial and cultural heritage sites. Combining with Burra to be the Australian Cornish Mining Sites, it was added to Australia's UNESCO World Heritage Tentative List in 2024.



Hughes Enginehouse 1916



Hughes Enginehouse today

The tentative listing is a significant step towards achieving World Heritage status, which would further protect the two historic areas.

Moonta and Burra were at the forefront of deep mining practices in the mid to late 1800s, especially the creative application of steam power.

Their distinctive high-pressure steam enginehouses, such as Hughes and Richmans Enginehouses in Moonta Mines, are recognised as icons of Cornish mining architecture.

Copper was discovered near what was to become Moonta in 1861 and mining began later that year. By the 1880s, the population of Moonta Mines, Moonta and suburbs was over 12,000.

At one stage, more than 6000 people lived and worked on the Moonta Mines site, and it was one of the most profitable copper mines in the world.

After operations ceased in 1923, much of the infrastructure was removed, leaving behind a fragmented legacy of an enterprise which once led the world in mining technology.

The miners who worked the copper ore body mostly came from Cornwall in England and brought with them hard rock mining techniques developed over centuries in the tin and copper mines there, as well as a rich and distinctive culture.

So dominant were the Cornish migrants in Moonta and so strong were they in shaping the culture of the area, the town became known as Australia's Little Cornwall.

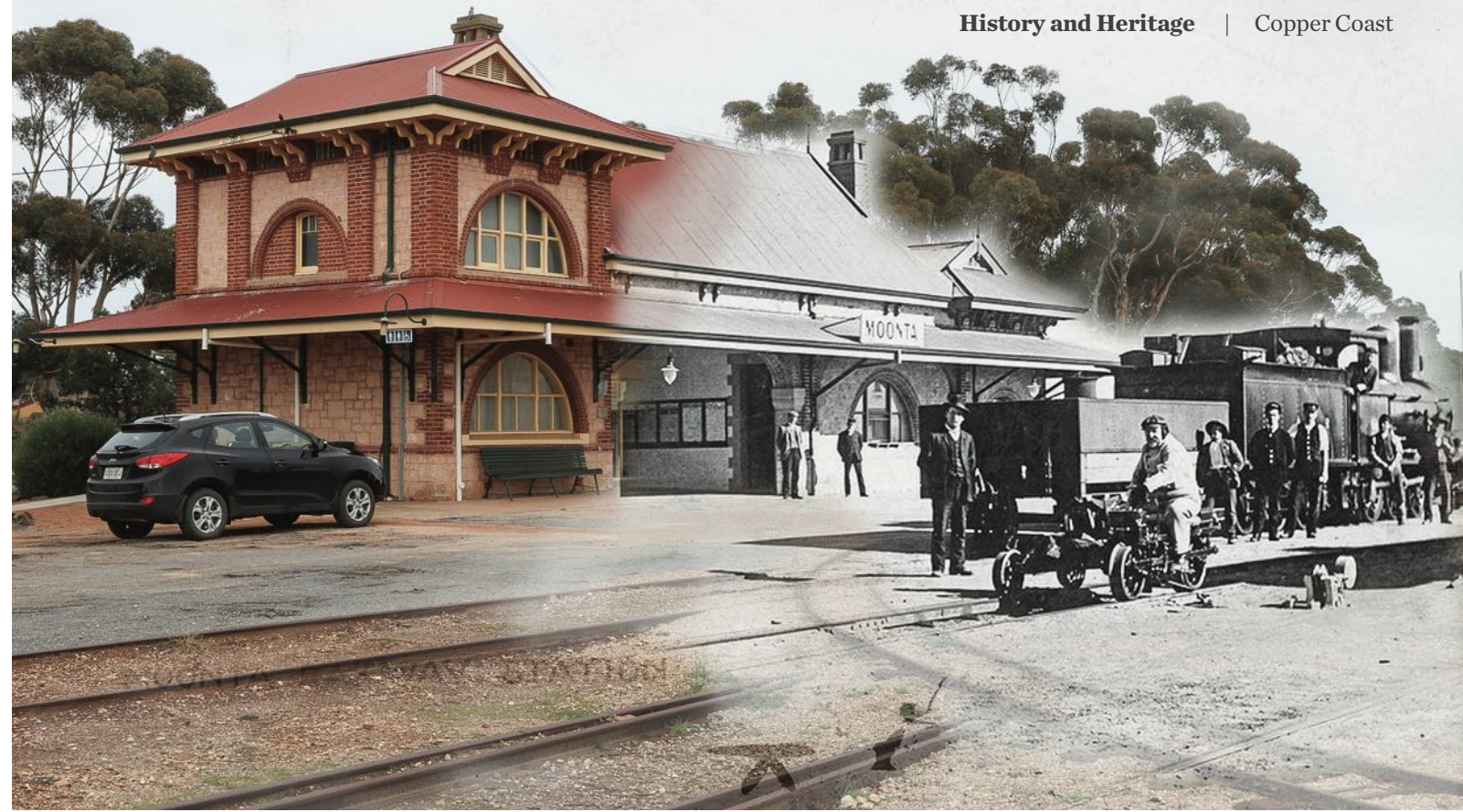
The National Trust has cared for much of the site since 1964. Former enginehouses, the old school, the tourist train and old lolly shop feature heavily in Moonta Mines' layout.

The school was built for 800 children in 1878 and now houses artefacts of the mine and Cornish culture.

Copper Coast Council commissioned a conservation management plan for the heritage sites after receiving \$4.8 million from the federal government to progress plans.

The Moonta Mines National Heritage Precinct steering group has overseen conservation works at the Hughes and Richmans Enginehouses as well as upgrades at the museum.

The steering group next turned its attention to the second stage of works, the 3.2 kilometre Elders Loop Trail which begins at Moonta Mines Museum, heads east to Richmans Enginehouse and onto Taylors Shaft and Hughes Enginehouse, before looping back to the museum.



A step back in time

Wallaroo Mines

Copper was first discovered by shepherd James Boor on the pastoral lease of Walter Watson Hughes and his brother-in-law John Duncan. The mineral was found almost 10 kilometres southwest of the sheep station called Wallaroo on December 17, 1859.

Boor found green-coloured stones, which had likely been unearthed by a wombat. He pocketed them and forgot about them for a few days before informing Duncan of his find.

Hughes then secured mineral leases which he named the Wallaroo Mine after his sheep station. He hired four Burra miners and started mining at Home Shaft in February 1860. By the middle of the year, 150 miners were employed and the Wallaroo Mining Company was formed. By the mid-1860s, the mine was producing 26,000 tons of ore a year and, at its zenith between 1870 and 1875, it employed 1000 men and boys.

Moonta Mines

Moonta Mines was the first mining company in Australia to pay £1,000,000 in dividends, and it all started when Patrick "Paddy" Ryan discovered traces of copper in May 1861.

Pastoral lease holder Walter Watson Hughes heard of the discovery; a syndicate was formed and members travelled with Ryan to Moonta to see the site.

Hughes lodged a claim in the name of a

dummy, but this was rejected.

Hughes returned to Moonta with a surveyor and met Ryan, who showed him where he had found the copper, and the survey information was taken by a young man named William Horn to original shareholder, John Taylor in Adelaide.

Horn rode nonstop for 22 hours, covering 164 miles, and exhausting eight horses to deliver the information before gam the next day.

Taylor and a rival syndicate were both present when the Lands Department opened, but Taylor received first attention and secured the leases, sparking a legal battle that went to the Privy Council, but Hughes settled out of court.

Forming the Tipara Mining Association, which later became the Moonta Mining Company Taylor started operations in late 1861, with almost 5000 ton of ore being produced in the first year.

Under the management of mine captain Henry Richard "Cap'n" Hancock, the project developed rapidly with around 1200 men and boys employed by 1865. In the next five years, more than 5000 people became dependent on the mine, which was producing 20,000 ton of dressed ore per year, averaging 20 per cent copper.

Moonta Mines employed 1700 people in 1876 and amalgamated with Wallaroo Mines in 1890, by which time ore worth £5,600,000

had been mined.

The new joint company employed an average of 1900 people during its 33 years of operation with employment reaching 2700 in 1906.

Smelting

Wallaroo was established as a port soon after copper mining began at Wallaroo Mines and the first load of copper ore was shipped out in mid-1860.

When the township was surveyed the same year, the foreshore was sold as water allotments to the Wallaroo Mining Company for the establishment of smelting works, to be logically sited near the port.

Smelting works commenced in 1861 and the first smelted copper was shipped in January 1862.

Many Welsh smelter men were employed, giving Wallaroo a distinctive Welsh flavour, and the Welsh language was used in the town for many years.

Over its 65 years, the smelter produced more than 300,000 tons of copper metal as well as significant quantities of gold, silver, lead and sulphur-based byproducts (fertiliser for nearby grain farmers).

When the company abandoned the site in 1926, it left the 36 metre Hughes Chimneystack standing as a monument; the other 12 stacks had been demolished, along with most of the site's other structures.

Visit Kadina

More than 5600 people call Kadina home, and there's no surprise as to why.

The town's central business district is pedestrian friendly, with wide footpaths, ample pedestrian crossings and large car parking areas.

Historical limestone buildings include the Kadina Town Hall, former banks and churches.

Victoria Square in the heart of the town, is a beautiful shady park providing the perfect spot for a picnic or markets.

Copper Coast Visitor Information Centre offers more than just friendly advice about what you can see and do during your stay. The facility also features a putt putt course, an indoor playground, miniature train rides, a gigantic museum and souvenirs, with a boutique brewery also at the site.

Walleroo Mines — where copper was first discovered — is a suburb of Kadina, along with Jerusalem, Jericho, Matta Flat and New Town.

A few relics of the copper mining industry remain, and many old limestone cottages are still lived in today.

FARM SHED HERITAGE MUSEUM

The museum brings together some of the fascinating developments and practices of dryland farming. Exhibits show the hardships endured on the land, detailing the process of land clearing, reliving the vital role of animals on farms and exploring the transition from horse to tractor-powered farming. A collection of varied farming machinery is complemented by Kadina history themes. The Wallaroo Mines, where copper mining started, was within sight of Matta House, the historical residence which forms part of the museum. Matta House evokes the mining era. Other displays include Life at Wallaroo Mines; They Served, about local servicemen and women; The Local Newspaper, with giant printing presses; a 1950s rural schoolroom from Kulpara; Her Side of the Story, about women's roles on the farm; and Farmyard, highlighting children's roles on the farm. The farming story starts with a look at many aspects of life for farming families. Interpretive displays follow the process from clearing scrub to sowing grain and the progress towards broadacre cereal farming which sustains Yorke Peninsula today. Don't miss the Sowing the Seed display, the harvesting machinery shed, and the vintage tractor and vehicle collection. You will leave with renewed appreciation of how far the Copper Coast has come, and of the tremendous volunteer effort which has gone into creating such high-standard displays.

Copper Coast Tourism Centre,
50 Mines Road, Matta Flat.

Copper Coast Putt Putt

COPPER COAST VISITOR INFORMATION CENTRE

Kadina's nationally accredited, award-winning Copper Coast Visitor Information Centre is co-located with The Farm Shed Museum, Copper Coast Indoor Play Centre, Copper Coast Putt Putt and miniature trains. The centre prides itself on offering quality souvenirs, locally made produce, local history books and an extensive range of information to help you plan your visit to the region or elsewhere in South Australia. Enjoy a coffee, tea or hot chocolate and sit back while deciding your next move with assistance from the friendly staff.

50 Mines Road, Matta Flat.



COPPER COAST INDOOR PLAY CENTRE

Copper Coast Indoor Play Centre offers a fun, safe, awesome play environment for young families. Enjoy coffee and a snack whilst sitting back and watching the kids play. Located within the Copper Coast Tourism Centre, the play centre is a great place to be no matter the weather.

Copper Coast Tourism Centre,
50 Mines Road, Matta Flat.

COPPER COAST MINIATURE RAILWAY

The Copper Coast Old Engineering and Machinery Club runs miniature train rides.

This handmade track operates on selected weekends (usually the first and third Sundays of each month) and is a delight for all ages.

Copper Coast Tourism Centre,
50 Mines Road, Matta Flat.

COPPER COAST PUTT PUTT

The region now has a challenging 18-hole putt putt mini golf course which boasts an array of eye-catching Copper Coast-themed holes.

Copper Coast Tourism Centre,
50 Mines Road, Matta Flat.

COPPER COUNTRY KEEPSAKES

Members of the Copper Country Keepsakes artisans' group provide an extensive and exciting range of quality handcrafted art, craft, home decor and country gift items for sale in their gift gallery. The emphasis is on originality, with a high standard of workmanship and friendly service. Copper Country Keepsakes supports local charitable organisations and has been operating for more than 20 years.

Ascot Cultural Centre, Graves Street, Kadina.



HEDONBAR BREWING COMPANY

Sample a rotating selection of seasonal ales and lagers all brewed onsite, plus a variety of other drinks too. The taproom is a large space with a relaxed atmosphere inside and the beer garden out the front is perfect all year round. They hold several beer festivals each year which are not to be missed. Oktoberfest anyone!

Copper Coast Tourism Centre,
50 Mines Road, Matta Flat.

ANGLICAN COMMUNITY CAFE, LIMESTONE GALLERY AND CORNISH GARDEN

Kadina Anglican Church has created a community cafe, public art gallery and garden in a space next to its op shop in Taylor Street. The cafe is run by volunteers who serve coffee, tea, milkshakes, homemade cakes, scones and light lunches. There is also a delicious supply of homemade pickles, sauces and jams. The Limestone Gallery features rotating exhibitions by various artists, hung on a unique limestone wall of the historical church. All are welcome to enjoy the community garden, linger over an outdoor coffee, relax in the shade and just enjoy the birds in a peaceful setting. The garden makes for a wonderful setting for small weddings. Check out the op shop while you're there, you're bound to find some treasures.

Corner of Hay and Taylor Streets, Kadina.

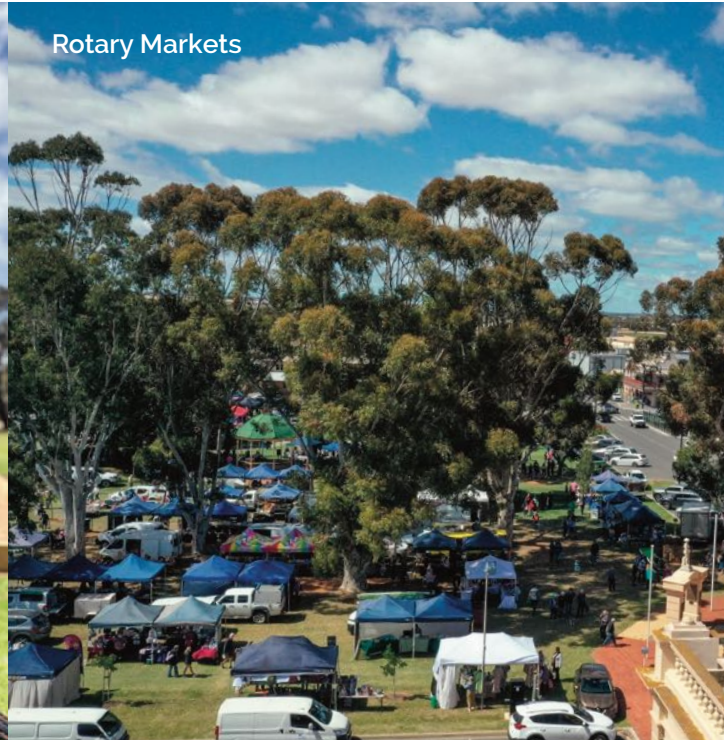


WALK IN THE TREES

Victoria Square is right in the heart of Kadina, alongside the revamped central business district. Walk in the Trees allows daring children and adults to scale to the top of a rope web and enjoy the view from the treetops before an exhilarating slide back to the ground. Victoria Square also includes the iconic Apex Express locomotive, a large shaded playground, restroom facilities and historical rotunda.



New Town Playground



Rotary Markets

KADINA ROTARY MARKETS

Usually held on the last Saturday of every month. Goods on offer include fresh produce, art and craft, plants, bric-a-brac, jewellery, tasty hot food, pottery, homemade cakes and much more.
Victoria Square, Graves Street, Kadina.



Victoria Square, Kadina

COPPER COAST SHOW

The Copper Coast Show is one of the longest-running shows in the state. This annual two-day event in August provides attractions, entertainment, competitions and exhibitions for all ages. Also available are trade market sites and food outlets to satisfy everyone. As you pass through the newly renovated heritage gates you will be ready for a day of family fun.

Corner Agery and Mines Roads, Kadina.

PARKRUN

The worldwide five kilometre running/walking event is held every Saturday from 8am along Rotary Copper Trail starting at the shelter across from the pony club, just off Airport Road. parkrun is a free event and times are recorded online at www.parkrun.com.au/.

ASCOT COMMUNITY ART EXHIBITION GALLERY

The Ascot Community Art Exhibition Gallery presents a calendar of changing exhibitions, including local interests, charity groups and visiting artists of various styles and media. There are also periodic exhibitions by Country Arts SA.

Ascot Cultural Centre, Graves Street, Kadina.

ASCOT COMMUNITY LOUNGE

A great place to rest and relax, meet friends.
Ascot Cultural Centre, Graves Street, Kadina.

DUCATOON PARK

Located on one of the most picturesque properties in the region, Ducatoon Park has been a family-run business for 30 years, although its owners have more than 60 years' experience in horse breeding. This boutique horse stud specialises in racehorses and rearing foals until yearling stage. Visitors are welcome to view the working stud and may even get the chance to cuddle a newborn foal. Guests are also invited to wander through the extensive gardens, large walk-in bird aviary and the "brag room" which showcases award-winning woodwork. Visits are by appointment.

Mines Road, Boors Plain (six kilometres from Kadina, towards Moonta).

COPPER COAST SPORT AND LEISURE CENTRE

The revamped Copper Coast Sport and Leisure Centre features four indoor board-floor courts, outdoor courts, an outdoor playground, squash courts, a gym, a swimming pool and more. Memberships available and casual visits for use of gym and other facilities welcome.

1 Doswell Terrace, Kadina

COPPER RAIL TRAIL WALKING/CYCLING TRACK

The sealed Rotary Copper Rail Trail runs from between Powell Terrace and Port Road, Kadina, next to the western roundabout, to Wallaroo, following the old railway line. The path allows people to walk, run or cycle between the towns with minimal traffic crossings to negotiate. About eight kilometres long, it takes about 30 minutes to ride and 1.5 to two hours to walk each way, and includes interpretive signs, shelter stops and more.

YORKE PENINSULA VETERANS AND COMMUNITY CENTRE

Originally a fish-processing factory, this centre was converted into a modern and well-equipped gathering place in 2005. The Ray Robinson Memorial Military Museum, which displays an impressive collection of World War I, World War II and Vietnam War military memorabilia, reflects the centre's dedication to all those who served in any conflict, anywhere in the world. The collection is being added to continuously through the centre's restoration workshop, donations and permanent loans.

220 Copper Coast Highway, New Town (two kilometres from Kadina toward Wallaroo).

The **ROYAL EXCHANGE**
KADINA

Est. 1861

| PUB CLASSICS | DAILY SPECIALS | \$17 LUNCH MENU |



| 33 GAMING MACHINES | TAB & LOTTERIES | SIP N SAVE BOTTLESHOP |

7 DIGBY STREET KADINA

P: (08) 8821 1084
WWW.ROYALEXCHANGEKADINA.COM.AU

Don't let the game play you. Stay in control. Gamble responsibly. For free and confidential support call 1800 858 858 or visit www.gamblinghelponline.org.au. Drink responsibly.

LOCALLY BREWED BEER

Enjoy a relaxed atmosphere & a rotating selection of beers all brewed right here in Kadina

Special release beers | Beer tasting paddles | Takeaway available
Snacks and other drink options

Open Friday-Saturday
50 Mines Road, KADINA
hedonbar.au

Check online for extended holiday trading

Drink responsibly.

✓ EFTPOS, SATSS and Cabcharge accepted
✓ ELGAS agent
✓ Swap 'n' GO Gas bottles and appliances

COPPER TRIANGLE TAXIS 24 HOURS A DAY 7 DAYS A WEEK
8821 3444

facebook

YP Veterans & Community Centre
RAY ROBINSON MEMORIAL MILITARY MUSEUM

Fine collection of World Wars I and II, and Vietnam Military Memorabilia, Memorial Rose Garden

Port Road, Kadina - Open Tues 9am-3pm | Wed 9am-12pm
Phone 0420 510 970

Entry - GOLD COIN donation

Pharmacist Advice

Copper Coast

Opening Times
Monday-Friday 8.30am-6.30pm
Saturday 8.30am-2pm
Sunday and public holidays 10am-2pm

77-79 Port Road, Kadina 8821 2600

WOMBAT HOTEL

• ACCOMMODATION • POKIES
GREAT MEAL DEALS - 7 DAYS!
19 Taylor Street, Kadina 8821 1108

DRINK RESPONSIBLY. DON'T LET THE GAME PLAY YOU. STAY IN CONTROL. GAMBLE RESPONSIBLY FOR FREE AND CONFIDENTIAL SUPPORT CALL 1800 858 858 OR VISIT WWW.GAMBLINGHELPONLINE.ORG.AU

Seaside STREETWEAR

• MEN'S • WOMEN'S • YOUTH • KIDS
APPAREL & ACCESSORIES

GIFT VOUCHERS AVAILABLE
SILENT THEORY • THE MAD HUEYS
FOXWOOD
all about eve
DIESEL
STRENGTH UNIT

35 GRAVES STREET KADINA 0409 147 291 Open Mon-Fri 9am-4.30pm Sat 9am-1pm

HuntsFuel

Kadina 8821 2390
Jamestown 8664 1240

Chappy's Place

• BREAKFAST
• LIGHT LUNCH - GF OPTIONS
• LARGE RANGE OF BURGERS
• BARISTA-MADE COFFEE

OPEN MON-SAT

20 Graves Street, Kadina 8821 1704

Australia's Tastiest Chicken



Living THE Dream

From seaside holiday homes to everyday living - we'll help style it your way!

- BEDDING • DINING • LOUNGE AND LIVING ROOM
- HOME DECOR

Weekly FREE delivery to most areas across Yorke Peninsula
Finance available

City pricing with country service for over 40 years!

ENFIELD FURNISHERS 16 & 19 Graves Street, Kadina 8821 2311
enfurn@enfurn.com.au www.enfieldfurnishers.com.au

BETTER FURNITURE | BEST PRICES

Visit a Copper Coast Library - fun for all the family!

Our libraries provide a range of services and activities for all ages in air-conditioned comfort

- Free events and activities
- Free wi-fi and computer access
- Colour printing and copying
- Books, magazines, DVDs, newspapers, eBooks, eMagazines, eAudiobooks
- Home delivery and call & collect services

Copper Coast Libraries are part of the One Card network offering access to library items from public libraries across the state

COPPER COAST LIBRARIES

1a Doswell Terrace Kadina 8828 1250
Blanche Terrace Moonta 8825 1511
John Terrace Wallaroo 8823 2924

For further information opening hours and locations visit www.coppercoast.sa.gov.au

Nurturing minds and inspiring faith in the heart of the Copper Coast

Currently accepting enrolments for 2025 and beyond.

- ▶ Foundation to Year 12
- ▶ Out of School Hours Care during term
- ▶ Weekly playgroup during term
- ▶ Well resourced classrooms and facilities including AFL-sized football oval, automotive workshop, science labs, sports stadium, performing arts centre, outdoor learning environment, and technical studies department
- ▶ Bus routes servicing the Copper Coast and wider regions
- ▶ Onsite social worker, counsellor and pastoral care

Celebrating serving the Copper Coast and Yorke Peninsula region for 25 years

10 Pannan Street, Kadina enrolments@harvest.sa.edu.au
harvest.sa.edu.au 8821 4945

HARVEST CHRISTIAN COLLEGE
Growing in God's Grace

Visit Moonta, Moonta Mines, and Moonta Bay

Once home to around 12,000 people during its bustling mining days, Moonta was the largest population centre in South Australia outside Adelaide in the 1870s.

Today, many of the iconic structures of Moonta Mines remain intact and are protected under South Australian and Australian heritage laws, and are on the World Heritage Tentative List. Now, with a population of over 5500, the Moonta area offers much more than just its rich history.

With all the essentials for a relaxing

seaside stay, Moonta, Moonta Bay and Port Hughes are celebrated for their sweeping white, sandy beaches, fishing and boating facilities, and Queen Square, a shady retreat with historical memorials and resident wombats.

The lively central business district and numerous popular eateries add to the area's charm.

Port Hughes is also a favourite for its world-class Greg Norman-designed golf course.

From heritage sites to scenic shores, Moonta, Moonta Mines, Moonta Bay and Port Hughes truly offer something for everyone.

COPPER COAST VISITOR INFORMATION CENTRE

Built and opened in 1909, the beautiful old railway station at the town's entrance is home to the Moonta Visitor Information Centre. Pamphlets and maps of the area are available. Quality souvenirs, giftware and many books relevant to Moonta's history can also be found here. Whilst in the grounds, take time to see the World War I trophy gun and learn about its history.

Blanche Terrace, Moonta.

MOONTA MINES MUSEUM

Moonta Mines Museum is in the former Moonta Mines Model School, built in 1878, which once had up to 1250 pupils. The school remained an active and important centre for the Moonta Mines community for 90 years and closed in 1968. The museum tells the story of Cornish pioneers who came to South Australia for the copper mines between 1861 and 1923. It has 14 rooms and houses displays about Cornish miners' lifestyles, mining, lodges and friendly societies, sports and pastimes, death and hardship plus extensive displays of clothing, china, silverware, photographs and memorabilia and a classroom furnished in circa 1900 style.

Verran Terrace, Moonta Mines.



MOONTA MINES TOURIST RAILWAY

Take a trip on the hugely popular, award-winning tourist train, which leaves from the station located in the Moonta Mines Museum car park. It takes passengers on an entertaining 50-minute guided tour through the historic landmarks of the former mining operations. Sit back and listen to the history of the region and the stories of the world-renowned Cornish miners, the mines' workings and ore sorting floors, reservoir and the tunnel through Ryans Tailing Heap, as well as other interesting tales.

Verran Terrace, Moonta Mines.

MOONTA MINES SWEET SHOP

Many consider the number one place to visit on the Copper Coast to be the Moonta Mines Sweet Shop. Located in the old Moonta Mines Post Office, this well-stocked sweet shop features a large variety of old-fashioned sweets and drinks.

Verran Terrace, Moonta Mines.

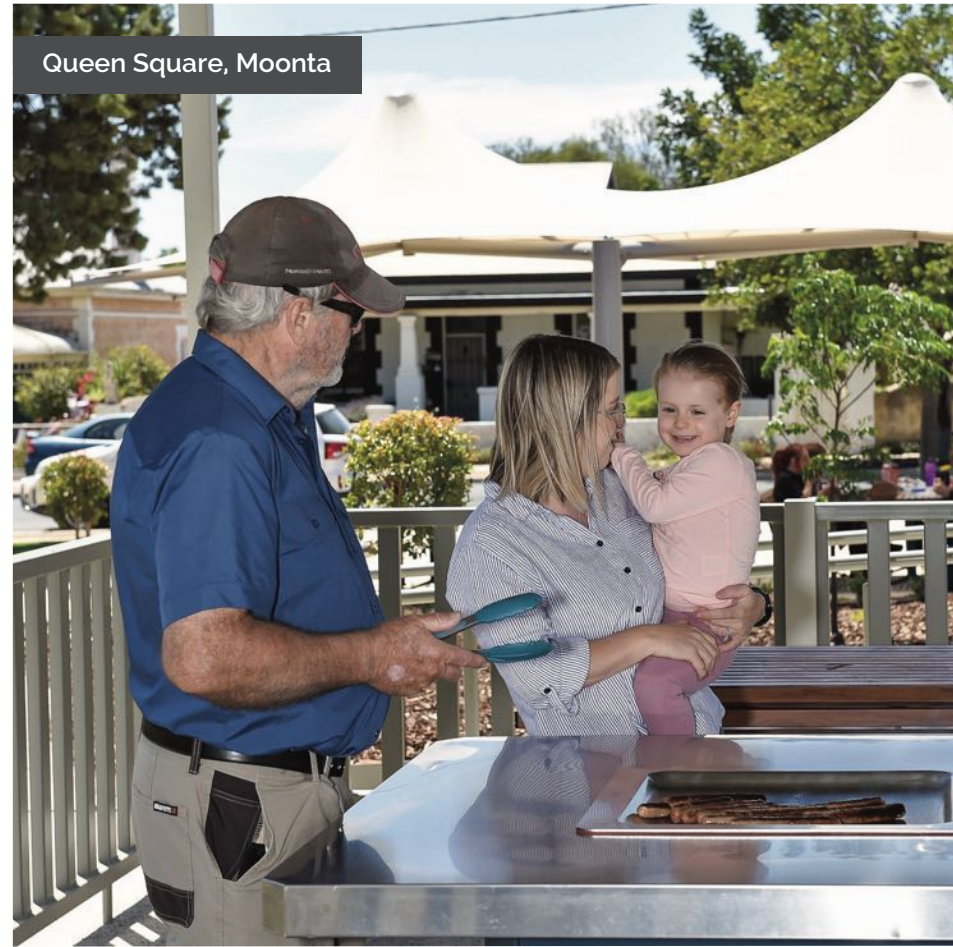


▲ SPLASH TOWN WATER PARK

Located at Moonta Bay near the jetty and safe swimming enclosure. On offer is free entry to a whole lot of fun — racer slides, water mushrooms and wading pools. Changing and toilet facilities are available on site. Splash Town is open October to May. For opening days and hours, contact the Moonta Visitor Information Centre on 8828 1251 or visit the Splash Town Facebook page, facebook.com/splashtowncoppercoast.



Moonta Mines Sweet Shop



Queen Square, Moonta

HORSE-DRAWN TRAM

Visitors can view a restored horse-drawn tram through an observation window at the Moonta Mines Tourist Railway platform, near the Moonta Mines Museum car park.

Verran Terrace, Moonta Mines.



COPPER RAIL TRAIL WALKING/CYCLING TRACK

The latest extension of the Copper Rail Trail links Moonta and Wallaroo. This sealed, 17 kilometre track starts at the Moonta Visitor Information Centre in the old railway station on Blanche Terrace and winds its way along the old train line to Wallaroo, where it heads along Cornish and Park Terraces to Ryan Street. It takes about an hour to cycle and three to four hours to walk each way.

There are several places where the trail crosses roads where you will need to give way to traffic.

HUGHES ENGINEHOUSE

Hughes Enginehouse is one of Moonta Mines' iconic buildings and features prominently in almost all of Moonta's promotional material. Erected between 1863 and 1865, the building contained a 60-inch Cornish beam pumping engine which pumped water from the underground workings on the largest ore bodies, making it a significant contributor to the Moonta Mining Company's success. The engine pumped water from the adjacent shaft at a depth of 366 metres, and from Taylor's Shaft 300 metres to the north at a depth of 768 metres, until the mines closed in 1923.

Moonta Mines (follow signs from Verran Terrace).

RICHMANS ENGINEHOUSE

This enginehouse was designed and built using stone from local beaches by Frederick May in 1869. The 32-inch Cornish beam engine it housed pumped water from nearby Stuckeys Shaft. This was used to power the boilers, concentration, crushing and treatment plants, and an adjacent sawmill.

Moonta Mines (follow signs from Verran Terrace).

TAILING HEAPS

Another remnant of bygone mining operations, Richmans, Ryans and Hancocks Tailing Heaps contain what was left of the ore after it had been concentrated to be sent to Wallaroo for smelting.

Richmans Concentrator Way, Ryan Road and Verco Street, Moonta Mines.

SIMMS COVE

Simms Cove, between Moonta Bay and Port Hughes, offers views of both jetties and, as you look out over Spencer Gulf, you can see Eyre Peninsula. Stairs either side of the headland allow you to walk from Moonta Bay to Port Hughes, even at high tide.

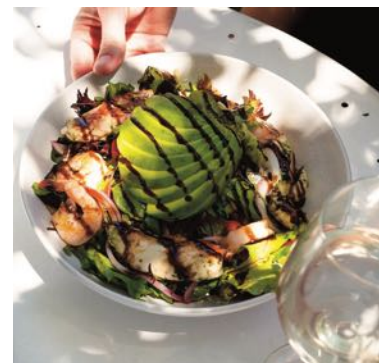
MOONTA BAY JETTY

The long L-shaped jetty is well worth the visit when you are at Moonta Bay. It provides a perfect spot for recreational fishing, and the catch of the day may include Australian herring (tommy ruff), garfish and squid, especially towards the late afternoon and evening when the tide is on the way in. There is a swimming enclosure which can be accessed via the jetty. The sandy beach extends all the way from Moonta Bay to Port Hughes and is suitable for all ages. When the tide goes out there is plenty of beach to play on and shallow rock pools to explore.

MOONTA FAMILY HISTORY AND RESOURCE CENTRE

The resource centre, housed in the Moonta School of Mines, has a helpful group of friendly volunteers who have years of experience researching family history. There are also equipment and facilities to help visitors research their own family histories and discover their Cornish ancestry. Interesting collections on show include an extensive medical display, working mine models and many old photographs.

Ellen Street, Moonta.



FOOD, GLORIOUS FOOD

Moonta, Moonta Bay and Port Hughes are filled with wonderful options to stop and have a bite — from a classic Cornish pasty and other baked goods to pub favourites, fish and chips, beautiful breakfasts and locally sourced produce. There are many flavourful, mouth-watering foods on offer!



Capella's

MOONTA MINES CHURCH

A replica of the Wesleyan Chapel in Truro, Cornwall, the stone Moonta Mines Wesleyan Methodist Chapel was erected in 1865, with local mining icon Cap'n H. R. Hancock laying the foundation stone. A gallery was added in 1872, giving the church a seating capacity of 1250. A pipe organ was purchased in 1890 thanks to a donation from Cap'n Hancock. The building was purchased by the Field of Dreams church in 2022.

557 Milne Street, Moonta Mines.

QUEEN SQUARE MARKETS

Crowds flock to the Queen Square Markets held throughout the year. Stallholders sell crafts, toys, collectables, jewellery, books, produce and bric-a-brac. Food and drinks are available, including baked goods and homemade produce.

Queen Square, Moonta.

MOONTA GALLERY OF THE ARTS

The gallery has a different exhibition each month with most having their own opening events. Exhibitions range from local to internationally renowned artists with a range of themes and styles. Contact the gallery for information about upcoming opening nights and exhibitions. Most artwork is for sale.

Moonta Town Hall, George Street.

MINERS COTTAGE AND GARDEN

Opened by the National Trust as a museum on October 9, 1967, the cottage is preserved for present and future generations so they may appreciate the way Cornish families lived in an era with no reticulated water or electricity. Step back in time and see the pioneers' way of life. The cottage and its magnificent garden are lovingly tended by a group of enthusiastic volunteers.

Verco Street, Moonta Mines.

SECRET GARDEN

The secret garden is much-loved by locals and is beautifully maintained by residents. It features a tree-shaded grassed area, accessed by steps, and is popular for picnics and small weddings. There is seating suitable for children around part of the grassed area. A short path leads to the Moonta Bay beach.

Kemp Place, Moonta Bay.



2025 MARKET DATES

- Sunday, 26th January, 10am-3pm
- Sunday, 9th March, 10am-3pm
- Sunday, 20th April, 10am-3pm
- Friday, 16th May, 10am-3pm
- Sunday, 8th June, 10am-3pm
- Sunday, 5th October, 10am-3pm
- Sunday, tbc December, 10am-3pm (Pageant night)

75 George Street, MOONTA
queensquaremarkets@gmail.com

- STALLS -
- LOCALLY MADE PRODUCE -
- FOOD TRUCKS -



OPEN 7 DAYS
BREAKFAST, LUNCH & DINNER

Dine in, takeaway or delivery available*
(Delivery conditions apply)

Indoor and alfresco dining –
Book your table via Facebook or
www.cafecapellasmoonta.com

Takeaway orders –
phone or order via 

*CONDITIONS APPLY  

1 Henry Street, Moonta
8825 1081



Visit Port Hughes

Port Hughes is home to tremendous fishing, a top-quality Greg Norman-designed golf course, and everything you need for a seaside stay.



PORT HUGHES JETTY

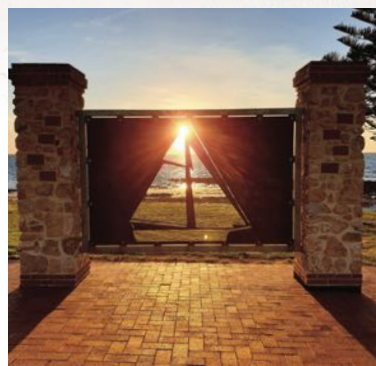
The jetty is a great spot for fishing and blue swimmer crabs. Australian herring (tommy ruff), garfish and squid are just some of the species on the menu.

PORT HUGHES BOAT RAMP

One of the busiest ramps in the state, Port Hughes has six lanes for launching and retrieving, as well as ample parking and wash-down facilities. Annual permits are available from Copper Coast Council's Kadina office and daily permits are available on the EasyPark app; see council's website coppercoast.sa.gov.au for information.

▲ SOUTH BEACH

South Beach, Port Hughes, has a reputation as one of the state's most pristine stretches of seashore, and is just one portion of the beautiful coastline the picturesque town has to offer.



PORT HUGHES MEMORIAL

This unique memorial honours those who set sail from Port Hughes, Simms Cove and Moonta Bay but did not return, as well as locals who lost their lives at sea elsewhere. The memorial is interactive, featuring plaques with QR codes that link directly to the stories of each of the 23 remembered seafarers. Port Hughes foreshore.



COPPERCLUB, THE DUNES GOLF COURSE

A Greg Norman-designed links course, Copperclub gives the option to play nine or 18 holes with front and rear tee-offs for each hole. Public bookings are available; there are clubs, and motorised and pull buggies for hire if needed. The Deck Bar, boasting views over Spencer Gulf, is a perfect spot to relax after your round of golf. Information: copperclub.com.au.

Albatross Drive, Port Hughes.

Yorkes Family-owned and operated boutique coffee company, for all your supplies

- Coffee beans • Decaf coffee
- Coffee and chocolate pods
- Chocolate powder

Local and delicious!

hello@yorkescoffee.com.au | www.yorkescoffee.com.au | Yorkes Coffee Company

THE PORT HUGHES TAVERN

Open 7 Days

- Lunch & Dinner with Sea Views
- Stone Grills
- Pet Friendly Alfresco

Bar | Dining | Gaming | Functions
2 Minnie Terrace, Port Hughes SA 8825 2840

DRINK RESPONSIBLY. THINK OF THE PEOPLE WHO NEED YOUR SUPPORT. GAMBLE RESPONSIBLY. CALL GAMBLING HELP SERVICE 1800 000 000. WWW.GAMBLINGHELPONLINE.ORG.AU

Regional – Seasonal – Local

taste the yorke

- "ORIGINAL" CORNISH PASTY • GIFTS
- COFFEE AND CAKE • LOCAL PRODUCE
- COOKED BREAKFAST TILL 1.30PM
- FOCACCIA, WRAPS AND CROISSANTS TILL 4PM
- OPEN 7 DAYS

56B GEORGE STREET, MOONTA
PHONE 0490 803 970
EMAIL INFO@TASTETHEYORKE.COM.AU

Henry on Yorkes B&B Adjacent to Taste the Yorke
www.countrygetaways.com.au

2023 South Australian Tourism Awards SILVER

Patina Living Artisan Boutique

Where Classic meets Contemporary

We specialise in curating unique home and living décor, blending old and modern styles. Visit our boutique to discover that special piece for your home.

11A Ryan Street, Moonta 0417 855 717

copper coast Lifestyle village

Copper Coast Lifestyle Village is a fun and sociable over 55's retirement community situated in the beachside suburb of Moonta adjacent to all medical services and within easy access to beaches, fishing, cafes and the Moonta town centre.

You'll love the relaxed and happy lifestyle with unrivalled facilities and maintenance free living!

A better lifestyle choice

P (08) **8132 0232** coppercoastlifestylevillage.com.au 7 James Place, Moonta

Peninsula PLUMBING

Lic. No. BLD 194019 PGE 235039 SA

friendly – reliable – locally owned

For all your plumbing needs

- Drain inspections with CCTV camera
- High-pressure water jetting of drains
- Gas, electrical and solar hot water units
- Swimming pool cleaning and maintenance
- Rainwater tank cleaning
- Stormwater and rainwater systems
- Septic tank cleaning
- Septic systems – Sewer connections
- Vacuum excavations
- Aerobic wastewater servicing
- Drain relining
- New home plumbing
- Renovations
- Water filtration systems
- Thermal imaging leak detection

Phone **8825 1762** www.peninsulaplumbing.net.au

Unique and innovative gifts for all occasions

Gift AFFaiRe

22 George Street
MOONTA
8825 1001

BUY ONLINE OR IN STORE

www.giftaffaire.com.au

**STONEWALL COTTAGE
CROSS ROADS**

SUPERB HERITAGE HOLIDAY ACCOMMODATION

PH 0407 873 177
BOOK ON STAYZ / VRBO OR BOOKING.COM

18onHughes

SEASIDE ACCOMMODATION
Where memories are made

MOONTA BAY

- 500m to beach / Splash Town
- Free wi-fi
- 3 large bedrooms
- 2 toilets
- Ducted r/c air conditioning
- 2 driveways
- Fish cleaning & BBQ facilities
- Book via email, Facebook page, or Stayz

✉ eighteenonhughes@icloud.com

...MOONTA...

ANTIQUES & COLLECTABLES

Open 7 days!

LARGE RANGE OF BRIC-A-BRAC AND FURNITURE

41 George Street, Moonta
Phone 8825 2705

FOR **Gorgeous** FASHION

ALL YOUR FAVOURITE BRANDS
Fashion ■ Shoes ■ Bags ■ Jewellery

Stylish Bird Boutique

57a George Street, Moonta – 8825 3093

DISTINCTIVE HOMES

Lic No G10420

Leading SA Builder

Local consultant Marion Noack looks forward to assisting you
Call 0419 039 863 or email marion@distinctivehomes.com.au

✓ Family Homes ✓ Retirement and Investment Properties



WE LOVE MOONTA BAY.

YOU'LL LOVE THE LIFESTYLE!

At Moonta Bay Lifestyle Estate you can have a brand-new home in our vibrant community of over 50's. Bring your gear, the lifestyle sites have enough space for your boat or caravan in your backyard. Plus there's the resident Clubhouse for when you feel like getting social.

We'd love to show you around.

MOONTA BAY LIFESTYLE ESTATE
lovin' this life!

Entry via Willard Street, Moonta Bay.

Phone 08 8825 3716

moontabaylifestyle.com.au • Find us on

* Correct as at December 2024. Subject to terms and conditions.

**Visit Moonta Mines
A National Heritage Place**

- Moonta Mines Museum
- Train Rides
- Sweet Shop
- Miners Cottage & Gardens
- Moonta School of Mines/History Centre (Ellen Street, Moonta)

National Trust

Souvenirs, books and group tour bookings also available



For more information:
Moonta Mines Museum Information Centre | 8825 1891 | Open daily 10am-4pm
www.moontaheritage.com.au | info@moontaheritage.com.au

Visit Wallaroo

Wallaroo, home to more than 4700 people, offers a vibrant mix of places to eat, stay and shop.

The town's bustling shipping terminal supports international grain exports and shares the scenic foreshore with places perfect for fishing, swimming, or simply unwinding by the sea.

Once South Australia's second-busiest port, thanks to booming mining and

smelting industries, Wallaroo still preserves many historical buildings from that era.

Accommodation options cater to every preference and budget, from affordable stays and tourist parks to group lodgings, luxury apartments and holiday rentals.

Visitors come for Wallaroo's stunning coastline, boating and fishing spots, scenic walking trails and resort-like appeal, as well as the chance to explore the town's rich heritage and connection to the past.



WALLAROO INFORMATION OUTLET

For visitor information, visit the Wallaroo Heritage and Nautical Museum.

Jetty Road, Wallaroo, phone 8823 3015.

WALLAROO HERITAGE AND NAUTICAL MUSEUM

This fascinating museum is housed in the town's first post office, built in 1865, and provides an important insight into the early activities of this historical port. The extensive displays cover the copper smelting era (1861-1923), maritime history, shipwrecks, railways, postal and telephone history, local religious life, civic affairs, entertainment, sport, the war years and general local history. The days of sail are illustrated in the large nautical section where visitors can follow the close links the area had with copper mining and smelting, agriculture and the sea. The history of the port of Wallaroo is depicted with more than 70 large ship models, photographs, documents, relics and old record books. An intriguing exhibit is George the giant squid, which was found inside the stomach of a whale caught off Albany, Western Australia, many years ago.

Jetty Road, Wallaroo.

WALLAROO GUIDED WALKING TOURS

Take a historical walk around Wallaroo and learn more about the many buildings on the SA Heritage Register. Tours are offered during peak tourism times or group bookings can be arranged by appointment. Departing from the Wallaroo Heritage and Nautical Museum, this tour takes about 90 minutes.

Jetty Road, Wallaroo.



WALLAROO BEACHES

Wallaroo has several beaches including Office Beach, North Beach and Sailing Club Beach. All are great for swimming. North Beach is one of the few beaches in South Australia on which a vehicle can still be driven. Wallaroo is also popular for scuba divers and snorkelers. For those looking for the ultimate day's fishing, Wallaroo is an ideal destination.

RESTAURANT | DISTILLERY | MICROBREWERY



Enjoy our crafted beers, awarded gin and amazing food



13 OWEN TERRACE
WALLAROO 8823 3809

WALK-INS WELCOME | BOOKINGS RECOMMENDED

*DRINK RESPONSIBLY

WWW.BONDSTORE.NET.AU



North Beach

COPPER RAIL TRAIL WALKING/CYCLING TRACK

The sealed Rotary Copper Rail Trail connects Wallaroo and Kadina, eight kilometres to the east, and Wallaroo to Moonta, 17 kilometres south. Following the old railway corridors, the shared trails allow people to walk, run, cycle or use their mobility aids between the three towns with minimal road crossings. The track to Kadina starts with the Wallaroo Avenue of Honour, which recognises those who lost their lives in war, located near the Wallaroo Town Hall. The Moonta track starts on Ryan Street, Wallaroo, before heading along Cornish and Park Terraces to meet the original railway line. Estimated each-way travel times are; Wallaroo to Kadina, 30 minutes to ride and 1.5 to two hours to walk; Wallaroo to Moonta, an hour to cycle and three to four hours to walk. There are informative signs, shelter stops and sights to enjoy along the way.



BOND STORE

The Bond Store has breathed new life into one of Wallaroo's most historical buildings. Formerly Elands Bonded Store, the Bond Store was the Copper Coast's first microbrewery and distillery. Since opening its doors in 2019, the Bond Store has been serving quality tapas-style dishes and drinks. Owen Terrace, Wallaroo.

WALLAROO GOLF COURSE

Located alongside the community sports club, this irrigated 18-hole golf course now has putting greens instead of scrapes. Electric and push carts are available for hire. Information: wallaroorgolfclub.org. Cornish Terrace, Wallaroo.

WALLAROO SAILING CLUB

Racing starts at 2pm most Sundays during summer and there are learn-to-sail courses on Sunday mornings. Friday night is social night. Other activities include radio-controlled yachts on Tuesday mornings and Thursday evenings during summer. The clubhouse is available for events. Visitors welcome. www.revolutionise.com.au/wallaroesailing. Heritage Drive, Wallaroo.

WALLAROO COMMUNITY SPORTS CLUB

Wallaroo Community Sports Club opened in 2011 and is home for the Wallaroo golf, croquet and bowling clubs. It features indoor carpeted rinks, a bar and a function centre which can seat 300 people. For information, see the community club's Facebook page.

Cornish Terrace, Wallaroo.



TARNASEY FARM

Experience farm life and get up close and personal with animals including chickens, cows, sheep, horses and more. Located between Wallaroo and Kadina, Tarnasey Farm features Little Farmer Tours by appointment. Come for a visit or stay in Tarnasey's accommodation cabins. Parents/carers can relax in deluxe but affordable accommodation and know their children are in a safe and fun environment. A farm tour and animal feeding experience are included with every stay.

205 Ellis Road, Wallaroo.

WALLAROO JETTY

Wallaroo jetty is 867 metres long and has three berths each side to accommodate large cargo ships which utilise the significant bulk grain handling facilities. Pristine waters provide a haven for multitudes of marine life, including garfish, squid and whiting.



EATING OUT OPTIONS

From fish and chips at the beach to a pizza to share or hot coffees and delicious breakfasts, Wallaroo is a culinary delight. The seven pubs around the town are perfect to refresh yourself after a long day exploring.



Wallaroo Marina Apartments



The Smelter

Wallaroo
HOLIDAY PARK

Relax and indulge in an idyllic family lifestyle

- Beachfront units/sites
- Pet friendly (on sites only)
- New camp kitchen
- Free wi-fi
- Kiosk, barbecue area
- Playground
- Café/Restaurant
- Bouncy pillow
- Disabled facilities
- Bike track
- Games room
- Petting zoo
- Hire equipment – go karts, kayaks, stand-up paddleboards

Pamir Court, Wallaroo

Phone 8823 2531

★★★★★

Email stay@wallaroholidaypark.com.au
Web www.wallaroholidaypark.com.au

Your host: Michael Byrne and team of friendly staff

THE **WALLAROO HOTEL**

COME AND DISCOVER **WALLAROO'S HIDDEN GEM**

26 ALEXANDER STREET
☎ 8823 2444

✓ GREAT BEER ✓ GREAT SERVICE ✓ GREAT ATMOSPHERE

- DINNER THURSDAY-SATURDAY 6PM-8PM
- \$6 PINTS 4PM-6PM FRIDAY & SATURDAY
- FUNCTION ROOM AVAILABLE FOR HIRE

POKIES

OPEN FROM 7am Tues-Sun

Specialising in all-day **breakfast, lunch and coffee**

THE SMELTER

15 Owen Terrace, Wallaroo 8823 2329

Fat G's
PIZZA, PASTA, ETC.

PHONE (08) 8823 3818
SHOP 4/2 OWEN TCE WALLAROO

SCAN TO FIND OUR MENU ON FACEBOOK

OPEN 7 DAYS* 10AM TO 8PM
*EXCL SOME PUBLIC HOLIDAYS

St Mary MacKillop School WALLAROO

Welcomes you to the Copper Coast

(08) 8821 5800
info@stmm.catholic.edu.au
www.stmm.catholic.edu.au

– Proudly providing R-9 Catholic education on the Copper Coast –
Speak with our Principal to discover what St Mary MacKillop School has to offer your child

Compleat Angler *Let's go fishing!*

3 Owen Terrace, Wallaroo Phone 8823 2840
10 George Street, Moonta Phone 8825 3400

www.compleatanglerwallaroo.com.au

OPEN 7 DAYS

NEWBERY CHEMISTS
Your Pharmacy
TIM GROSS & PARTNERS

Kadina – 24 Graves Street 8821 1055
Moonta – 8 George Street 8825 2063
(Moonta open 7 days per week)
Wallaroo – Shop B, 2 Owen Terrace 8823 2524
Snowtown – 1 South Terrace 8865 2298

www.newberychemists.au

Your pet's health is our priority!

Seaside VET Surgery
8823 3233 | 24 John Terrace, Wallaroo | seasidevet.com.au

Looking for somewhere to stay?
Accommodation available at Wallaroo Marina, North Beach, Moonta Bay and Port Hughes

bookings@escapeholidayrentals.com.au
www.escapeholidayrentals.com.au

ESCAPE HOLIDAY RENTALS CopperCoast
8823 3861

Ideally located on Wallaroo Marina, the perfect place for lunch, dinner or a relaxing drink

ALEHOUSE
Coopers
at Wallaroo Marina

Anglers INN
EST. 1965

- Beer Garden & 130 seat Bistro for all your function or gathering needs
- Takeaway food available online for pick up or delivery
- Yorke Peninsula's largest Drive thru Bottleshop with the largest range of Spirits, Beers and Wines.
- NATIONAL RETAILER OF THE YEAR - Liquor Legends 23/24
- ORDER ONLINE DELIVERY
- www.liquorlegends.com.au

- 20 Newly renovated Motel rooms with Foxtel
- 20 Machine gaming room with all the latest games
- Sports bar — TAB facilities, Sky Racing, Foxtel & Sportspick

9 Bagot St, Wallaroo SA
P 8823 2545 www.anglersinn.com.au

Don't let the game play you. Stay in control. Gamble responsibly. For free and confidential support call 1800 858 858 or visit www.gamblinghelpline.org.au. Drink responsibly.



WALLAROO HERITAGE & NAUTICAL MUSEUM
Jetty Road, Wallaroo

Three large buildings showcasing Wallaroo's history
See our new **George the Giant Squid mural**
Heritage displays, souvenirs and information

Open daily 10am-4pm

For group bookings/enquiries
Phone 8823 3015
https://wallaroocommunity.com.au/attractions-museum

Sonbern Lodge Motel
Quality accommodation Review Rating ●●●●○

Quality accommodation in the heart of Wallaroo. Standard and Deluxe rooms, all with ensuite, s/s r/c air-conditioning, LCD TV, microwave, tea/coffee making. Free wi-fi, off-street parking. "Cabins available". Easy walking to beach, jetty, supermarket, shops, dining and cafes. We provide quiet, comfortable accommodation at a realistic price (no bar or pokies).

18 JOHN TERRACE, WALLAROO 8823 2291
E: sonbernlodge@internode.on.net W: www.sonbernlodgemotel.com.au

Bistro – Spacious Deck – Great Food – Local Seafood
Gaming Room – TAB – Functions – Live Entertainment
Sports Bar – Bookings are encouraged

DRINK RESPONSIBLY.

DON'T LET THE GAME PLAY YOU. STAY IN CONTROL. GAMBLE RESPONSIBLY.
FOR FREE AND CONFIDENTIAL SUPPORT CALL 1800 858 858 OR VISIT WWW.GAMBLINGHELPLINE.ORG.AU

11 Heritage Drive, Wallaroo 8823 2488
www.coopersalehouse.com.au

ELECTRICAL **NRG** SOLUTIONS

0407 233 525

Monday-Friday 8am-5pm Email shane@enrgs.com

- INSTALLATION
- MAINTENANCE
- SOLAR
- REPAIRS

- DOMESTIC AND COMMERCIAL
- NEW INSTALLATIONS
- ADDITIONS AND RENOVATIONS
- POWER AND LIGHTING
- LED DOWNLIGHTS
- SAFETY SWITCHES
- TESTING AND TAGGING
- FAULT FINDING
- SOLAR AND MAINTENANCE



Your gateway to Yorke Peninsula

The Copper Coast is your ideal base to explore the treasures of the wider Yorke Peninsula.

Copper Coast's wide range of accommodation options means you're close to all the shopping, services and attractions that make the area a vibrant destination.

And, just a short drive from your Copper Coast stay, the rest of Yorke Peninsula awaits with a myriad of day-trip possibilities.

Discover local cellar doors, a microdistillery and boutique breweries, all within easy reach for a day's tasting tour. Sample the best of local wines at Barley Stacks Wines in South Kilkerran or Emoyeni Wines in Ardrossan, where unique wines from locally grown grapes are yours to enjoy.

Sunny Hill Distillery, just north of Arthurton, offers award-winning spirits, including vodka, gin, whisky, rum, and a range of delicious liqueurs and cocktails.

Further south in Minlaton, Watsacowie Brewing Company offers crafted brews that are well worth a visit.

Heading north? Stop by the much-loved Karimi's Kitchen in Alford for a memorable meal, then soak up Port Broughton's coastal charm, local shops, art galleries and family-friendly foreshore.

For those ready to explore further, Yorke Peninsula has even more to offer. Dhilba Guuranda-Innes National Park, on Yorke Peninsula's southern-most coastline, promises pristine beaches, rich marine life, top-notch fishing, and some of South Australia's best surf breaks.

Walk the Yorke trail, stretching from the Copper Coast and around the entire peninsula, offers a spectacular way to take in the region's stunning coastal views.

Or, experience it all on the self-guided Coastal Way road trip, showcasing the very best of Yorke Peninsula's beauty.

With a stay on the Copper Coast, the whole Yorke Peninsula is within reach, awaiting your discovery.

Experience the wonders of Dhilba Guuranda-Innes National Park

Just a couple of hours' drive from the Copper Coast, Dhilba Guuranda-Innes National Park makes an ideal day-trip destination.

Established in 1970 and renamed in 2020 to honour its co-management partnership with the Nharangga Traditional Owners, this park is a place where rich history and natural beauty come together.

Pack your walking shoes to explore the park's trails, which range from gentle 30-minute strolls to rewarding four-hour treks. Along the way, you'll encounter breathtaking coastal views, pristine beaches, and the historical ruins of the Innes township.

Wildlife enthusiasts may even spot brush-tailed bettongs, thanks to conservation efforts through the Marna Banggara project.

The park is a paradise for surfers, offering swells suitable for all skill levels, and anglers can enjoy excellent shore-based fishing.

Don't miss the Ethel shipwreck at Ethel Beach, which occasionally emerges from the sands, offering a stunning glimpse into the past.

Accessible by two-wheel drive, Dhilba Guuranda-Innes National Park also offers camping facilities for those wishing to stay a little longer.

A permit is required to visit and can be easily arranged through the SA Parks website: www.parks.sa.gov.au/parks/innes-national-park.

Discover Dhilba Guuranda-Innes — a natural wonder steeped in heritage and adventure.

FRASER ELLIS MP
STATE MEMBER FOR NARUNGGA

For constituent assistance visit
Narungga Electorate Office:
37 Graves Street, Kadina
Phone 8832 2455
email narungga@parliament.sa.gov.au

karimi's kitchen
TAKEAWAY
7 HIGH STREET-ALFORD

Amazing food in Alford
Curries available all week
AUTHENTIC/HOUSE-MADE
Monday-Thursday 8am-5pm
Friday 8am-6pm
8824 2369

BARLEY STACKS WINES

More than just wine tasting

Cellar Door and Function Centre
Open 7 days 10am-5pm
8834 1258 | barleystackswines.com

COPPER COAST SHOW
KADINA AH & F SOCIETY ESTABLISHED 1871
Kadina Showgrounds
Much to see be there!
SATURDAY 16TH - SUNDAY 17TH AUGUST, 2025
Contact 0474 720 716
Email: coppercoastshow.com.au
coppercoastshow@coppercoastshow.com.au

Come and enjoy our relaxed atmosphere and large range of drinks

SUNNY HILL DISTILLERY
ARTHURTON YORKE PENINSULA SA

Open Thursday - Sunday 11am-6pm
Check online for extended holiday trading
8658 Upper Yorke Road, Arthurton
Phone 0400 843 904
www.sunnyhilldistillery.com.au

*Drink responsibly
Liquor Licence 27037817

CALENDAR OF EVENTS



Kernewek Lowender
Cornish Festival

JANUARY	
26th	Australia Day Breakfast, Wallaroo
26th	Variety Club Australia Day Breakfast, Moonta
FEBRUARY	
15th-16th	Yorkers Basketball Carnival, Kadina
MARCH	
9th	Moonta Show N Shine
APRIL	
5th-6th	Copper Coast Sand Drags, Wallaroo
TBC	Yorke Emporium, Moonta
18th	Good Friday Ecumenical Service, Moonta
25th	Anzac Day
MAY	
12th-18th	Kernewek Lowender Cornish Festival
TBC	RSPCA Million Paws Walk, Wallaroo
27th-3rd	Reconciliation Week
JULY	
6th-13th	NAIDOC Week
20th	KDNA Netball Carnival, Kadina
AUGUST	
16th-17th	Copper Coast Show, Kadina
31st	BMX State Series Round 8, Kadina
SEPTEMBER	
TBC	Copper Coast Cycling Cup
TBC	Bowls SA Senior Supa Series
12th-14th	BMX Racing State Championships, Kadina
30th-2nd	Yorke Peninsula Field Days, Paskeville
OCTOBER	
TBC	Northbank Family Fishing Comp, Wallaroo
TBC	Kadina Hockey Carnival
NOVEMBER	
11th	Remembrance Day
TBC	Copper Coast Battle Dragons Marina Challenge, Wallaroo
DECEMBER	
12th	Rotary Twilight Markets, Kadina
13th	Wallaroo Christmas
14th	Moonta Christmas
15th	Christmas in Kadina
31st	Copper Coast New Year's Eve, Wallaroo
THROUGHOUT THE YEAR	
Parkrun, Kadina	8am every Saturday
Rotary Kadina Markets	last Saturday of each month
Wallaroo Lions Markets	second Saturday of each month (except June, July, August)
Queen Square Market, Moonta	see page 29 for dates



Copper Coast Show



YP Field Days

PUBLIC HOLIDAYS	
New Year's Day	Wednesday, January 1
Australia Day	Sunday, January 26
Australia Day Public Holiday	Monday, January 27
Adelaide Cup	Monday, March 10
Good Friday	Friday, April 18
Easter Saturday	Saturday, April 19
Easter Sunday	Sunday, April 20
Easter Monday	Monday, April 21
Anzac Day	Friday, April 25
King's Birthday	Monday, June 9
Labour Day	Monday, October 6
Christmas Day	Thursday, December 25
Boxing Day/Proclamation Day	Friday, December 26
SCHOOL HOLIDAYS	
Term 1	January 28 to April 11
Term 2	April 28 to July 4
Term 3	July 21 to September 26
Term 4	October 13 to December 12

FLAME FESTIVAL

- Food - Light - Art
- Music - Entertainment

SAVE THE DATE
May 2026

A three-day event showcasing local products and artisans throughout the Copper Coast.

KERNEWEK LOWENDER COPPER COAST CORNISH FESTIVAL

MOONTA | KADINA | WALLAROO

12th-18th May 2025

Web: www.kernewek.org Facebook: [kernewekcc](https://www.facebook.com/kernewekcc)
Email: kernewek@coppercoast.sa.gov.au

YORKE PENINSULA FIELD DAYS

Paskeville SA

SAVE THE DATE

30th September - 2nd October, 2025

SOUTH AUSTRALIA'S PREMIER RURAL EVENT WITH OVER 600 EXHIBITORS

- Farm machinery and equipment ● Working sheepdogs
- Tools and accessories ● Automotive ● Education
- Lifestyle products and services ● Fashion parades
- Home and garden ● Guest speaker presentations

Visit www.ypfielddays.com.au

Australia's Oldest Field Days - est. 1894

Email: ceo@ypfielddays.com.au | Phone: 8827 2040

SERVICES

**POLICE ASSISTANCE LINE 13 14 44
IN AN EMERGENCY, CONTACT 000**

BABY CHANGE FACILITIES

- **Ascot Cultural Centre**
Graves Street, Kadina
- **Copper Coast Visitor Information Centre**
50 Mines Road, Kadina
- **Victoria Square**
Graves Street, Kadina
- **McDonald's restaurant**
Forster Street, Kadina
- **John Terrace, Wallaroo**
- **Ellen Street, Moonta**

BANKS AND ATMS

- **ANZ Bank**
36 Graves Street, Kadina
- **BankSA**
21 Frances Terrace, Kadina
42 George Street, Moonta
- **Commonwealth Bank**
34 Graves Street, Kadina
- **National Australia Bank**
45 Graves Street, Kadina
- **Wallaroo (ATM only)**
19 Owen Terrace

CAR WASH

- **Kadina Car Wash** 11 Taylor Street, Kadina

CHARGING STATIONS

Electric vehicle charging stations

- **Wallaroo Holiday Park** Pamir Court, Wallaroo
- **Wallaroo Marina Apartments**
Heritage Drive, Wallaroo
- **Kadina** Frances Terrace car park

Mobility scooter recharging stations

- **Kadina Community Library**
Doswell Terrace, Kadina
- **Wallaroo Adventure Playground**
John Terrace, Wallaroo
- **Wallaroo foreshore**
Chatfield Terrace, Wallaroo
- **Smelters Trail Heritage Drive**
Barbecue area, Wallaroo
- **Moonta Bay foreshore**
Barbecue area, Moonta Bay
- **Queen Square rotunda**
George Street, Moonta

CHURCHES

- **Anglican** — Kadina, Moonta, Wallaroo
- **Australian Christian Churches (Futures Church)** — Kadina
- **Baptist** — Wallaroo
- **Catholic** — Kadina, Wallaroo, Moonta
- **CRC Churches International** — Moonta
- **Crosslink Christian Network** — Kadina
- **Church of Christ** — Kadina
- **Field of Dreams** — Moonta Mines
- **Lutheran** — Kadina
- **The Church of Jesus Christ of Latter-day Saints** — Kadina
- **The Salvation Army** — Kadina
- **Uniting** — Kadina, Wallaroo, Moonta, Moonta Mines

COPPER COAST GALLERIES

- **Chatswood Art Studio** Moyle Street, Kadina
- **Ascot Community Art Exhibition Gallery**
Ascot Theatre, Graves Street, Kadina
- **Moonta Gallery of the Arts** George Street, Moonta
- **Copper Coast Art Gallery** Robert Street, Moonta
- **Lonesome Valley Studio** Olive Parade, Kadina
- **Limestone Gallery** Anglican Church, Kadina
- **Salty Art Studio** Moonta

DENTAL

- **Copper Coast Dental Kadina**
Port Road, Kadina 8821 2099
- **Copper Coast Dental Wallaroo**
Owen Terrace, Wallaroo 8823 3588
- **Moonta Dental**
5 Majors Road, Moonta 8825 1116
- **National Dental Care**
70 Graves Street, Kadina 8821 2899

DOG PARKS

- **Kadina** Doswell Terrace
- **Moonta** Frances Terrace
- **Wallaroo** Heritage Drive

FREE INTERNET

- **Wallaroo foreshore**
- **Moonta Bay foreshore**
- **Copper Coast Visitor Information Centres**
50 Mines Road, Kadina; Blanche Terrace, Moonta
- **Kadina Community Library**
1a Doswell Terrace, Kadina
- **Moonta Community Library**
Blanche Terrace, Moonta
- **Wallaroo Library**
5 John Terrace, Wallaroo

SERVICES

LAUNDROMATS/DRY CLEANERS

- **Kadina Craft and Sewing Centre (Dry Cleaners)**
29 Graves Street, Kadina
- **YP Linen Services**
31 Hughes Street, Wallaroo (open seven days)
- **Kadina Laundromat** Goyder Street, Kadina

LIBRARIES

- **Kadina Community Library** Doswell Terrace 8828 1250
- **Moonta Community Library** Blanche Terrace 8825 1511
- **Wallaroo Library** 5 John Terrace 8823 2924

MEDIA

The **Yorke Peninsula Country Times** newspaper is published in Kadina with news from all over Yorke Peninsula and is available every Tuesday afternoon in newsagencies, local supermarkets and other outlets. Alternatively, visit ypct.com.au to purchase the full version online.

Gulf FM 89.3 is the Copper Coast's community radio station. For program information, visit gulffm.com.au

MEDICAL SERVICES

- **Kadina Medical Associates**
77-79 Port Road, Kadina 8821 3133
after hours 8823 0200
- **Moonta Medical Clinic**
Majors Road, Moonta 8825 2309
- **Owen Terrace Medical Practice**
31 Owen Terrace, Wallaroo 8823 2002
- **Wallaroo Hospital**
Ernest Terrace, Wallaroo 8823 0200

OP SHOPS AND SECOND-HAND GOODS

- **Lifeline Wallaroo** Owen Terrace, Wallaroo
- **Wallaroo Uniting Church** Emu Street, Wallaroo
- **Triple B Cafe** Evans Road, Wallaroo
- **Quality Second-hand Goods** Jones Road, North Beach
- **Antiques and Collectables** Wildman Street, Wallaroo
- **Bits and Pieces Second-hand** Charles Terrace, Wallaroo
- **REVAMP Op Shop** Blyth Terrace, Moonta
- **Australian Red Cross Moonta** Ellen Street, Moonta
- **Lifeline Moonta** Ellen Street, Moonta
- **Annie's Shopping Opportunity**
Corner Blanche and Milne Terraces, Moonta
- **Moonta Antiques** George Street, Moonta
- **Salvos Stores Kadina** Port Road, Kadina
- **Kadina Christian Bookshop** Graves Street, Kadina
- **Kadina Kindy Shop** Digby Street, Kadina
- **Vinnies Kadina** Doswell Terrace, Kadina

- **Rehome Op Shop** Copper Coast Highway, Kadina
- **The Secondhand Shop** Port Road, Kadina
- **ADRA Op Shop** Port Road, Kadina
- **Anglican Church Op Shop** Taylor Street, Kadina
- **Blue Bird Traders and Old Curiosity Shop**
Graves Street, Kadina
- **Lutheran Church Op Shop** Ewing Street, Kadina

PARKS

Kadina

- **Victoria Square, Graves Street**
Toilets, playground, electric barbecues
- **New Town playground, Lawrence Street**
Toilets, playground, electric barbecues
- **Apex Park, Rendell Street**
Toilets, playground, electric barbecues
- **Copper Coast Indoor Play Centre, 50 Mines Road**
Admission: under 12 months, free; 1-2 year olds, \$4;
3-10 year olds, \$6
- **Skate Park, Doswell Terrace**

Moonta Bay

- **Moonta Bay foreshore reserve**
Splash Town, toilets, playground, electric barbecues

Moonta

- **Polgreen Park, Bay Road**
Toilets, playground, electric barbecues,
children's bicycle track
- **Queen Square, George Street**
Toilets, picnic areas, electric barbecues
- **Victoria Park, Milne Terrace**
Bush park with walking tracks
- **Skate Park, Verran Terrace**
- **McCaughey Park, Frances Terrace**

North Beach

- **Playground, Clayton Drive**
Toilets, shaded playground, outdoor fitness equipment,
basketball court and more
- **North Shores playground, Timaru Way** Toilets

Port Hughes

- **Playground, West Terrace**
Toilets, playground, electric barbecues, picnic areas

Wallaroo

- **Adventure Playground, John Terrace**
Toilets, electric barbecues
- **Davies Square, Wildman Street**
Historical rotunda, picnic areas, electric barbecues
- **Sincock Square Reserve, Victoria Street**
- **Skate Park, Hughes Street**

SERVICES

PHARMACIES

- Newbery Chemists**
24 Graves Street, Kadina 8821 2055
8 George Street, Moonta 8825 2063
Show 6, 2 Owen Terrace, Wallaroo 8823 2524
- Copper Coast Pharmacist Advice**
77-79 Port Road, Kadina 8821 2600

POST OFFICES

- Kadina** 56 Graves Street
- Moonta** 18 Ryan Street
- Wallaroo** Shop 19, 2 Owen Terrace
- Port Hughes** 1 Minnie Terrace

PUBLIC TOILETS *Denotes accessible facility

For exact locations and facilities, visit toiletmap.gov.au.

- Kadina:** Frances Terrace* (car park), Graves Street* (Ascot Cultural Centre), Victoria Square*, Rendell Street* (playground), Lawrence Street (New Town playground), Mines Road* (Visitor Information Centre), Russack Road* (cemetery).
- Moonta, Moonta Bay, Port Hughes:** Ellen Street* (car park), Henry Street* (Queen Square), Retallick Road (cemetery), Robert Street* (Polgreen Park), Simms Cove Road, Bay Road* (Splash Town Water Park), Port Hughes car park*, Pryors Lane (Visitor Information Centre).
- Wallaroo:** Spencer Highway* (cemetery), John Terrace* (adventure playground), Heritage Drive* (Office Beach), Heritage Drive (boat ramp), Jetty Road*, Clayton Drive* (playground), North Beach Esplanade, Timaru Way.

RV-FRIENDLY PARKING

Parking is available at the following locations. Terms and conditions apply. Permits required. For more information, contact the Copper Coast Visitor Information Centre, 50 Mines Road, Kadina, on 8821 2333. RV-friendly parking is for self-contained motorhomes. Minimal to no services or facilities are available at these sites.

- Kadina showgrounds, Mines Road**
- Paskeville, East Terrace** (community sporting complex).
- Wallaroo, Cornish Terrace** (former grain sampling yards, overnight stays only).
- Moonta, corner of Blyth Terrace and Clayton Road**

RV WASTE DUMP POINTS

- Kadina**, corner of Mine Crescent and Doswell Terrace
- Port Hughes**, Port Hughes Tourist Park, South Terrace
- Wallaroo**, corner of Mays Crossing and Victoria Street
- Moonta**, Clayton Road

SPORTS FACILITIES

Kadina

- Copper Coast Sport and Leisure Centre**
Tennis courts, basketball courts, netball courts, pickleball courts, indoor swimming pool, football oval — Doswell Terrace, Kadina
- Kadina hockey fields** Drain Road, Kadina

- Kadina golf course** Russack Road, Kadina
- Kadina bowling green** Hallett Street, Kadina
- Kadina croquet green** Hallett Street, Kadina
- Wallaroo Mines bowling green**
Lipson Avenue, Wallaroo Mines

Moonta

- Tennis, netball courts and football** Milne Terrace, Moonta
- Moonta golf course** Milne Terrace, Moonta
- Moonta bowling green** Blanche Terrace, Moonta
- Copperclub The Dunes golf course**
Albatross Drive, Port Hughes

Wallaroo

- Tennis, netball courts and football oval**
Cornish Terrace, Wallaroo
- Wallaroo golf course** Cornish Terrace, Wallaroo
- Wallaroo Community Sports Club**
Bowls, croquet, Cornish Terrace, Wallaroo

TAXI SERVICES

- Copper Triangle Taxis** 8821 3444
- Moonta Passenger and Taxi Service** 0447 528 000
- Wallaroo Bayside Taxis** 8823 2322

VETERINARIANS

- YP Vets** 20 Port Road, Kadina 8821 3350
- Seaside Vet Surgery** 24 John Terrace, Wallaroo 8823 3233



Copper Coast Visitor Information Centre

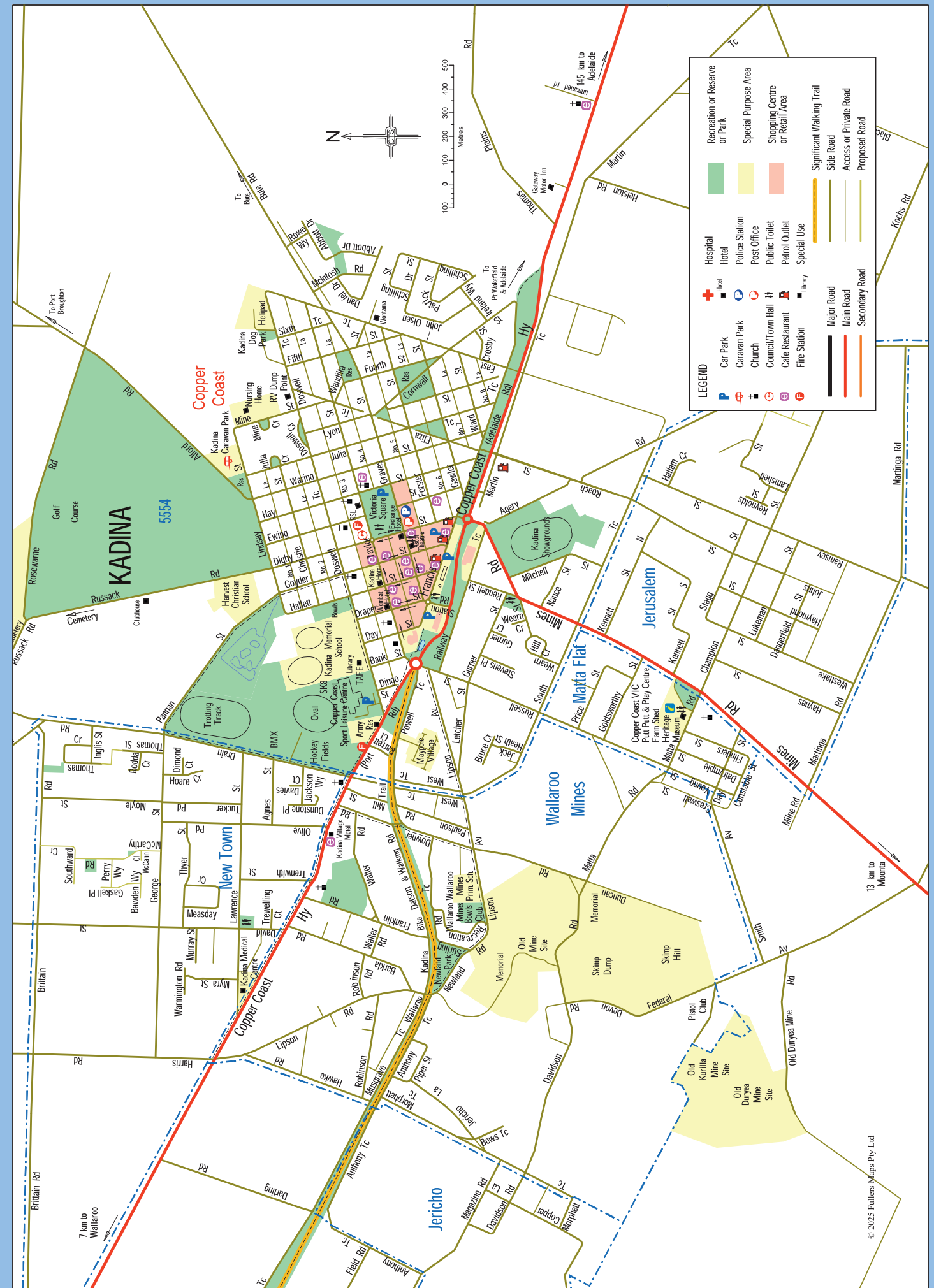
The Farm Shed Museum and Tourism Centre
50 Mines Road, Kadina
Free call: 1800 654 991
Phone: (08) 8821 2333
Email: visit@coppercoast.sa.gov.au
Web: www.visitcoppercoast.com.au
Facebook: www.facebook.com/coppercoastVIC

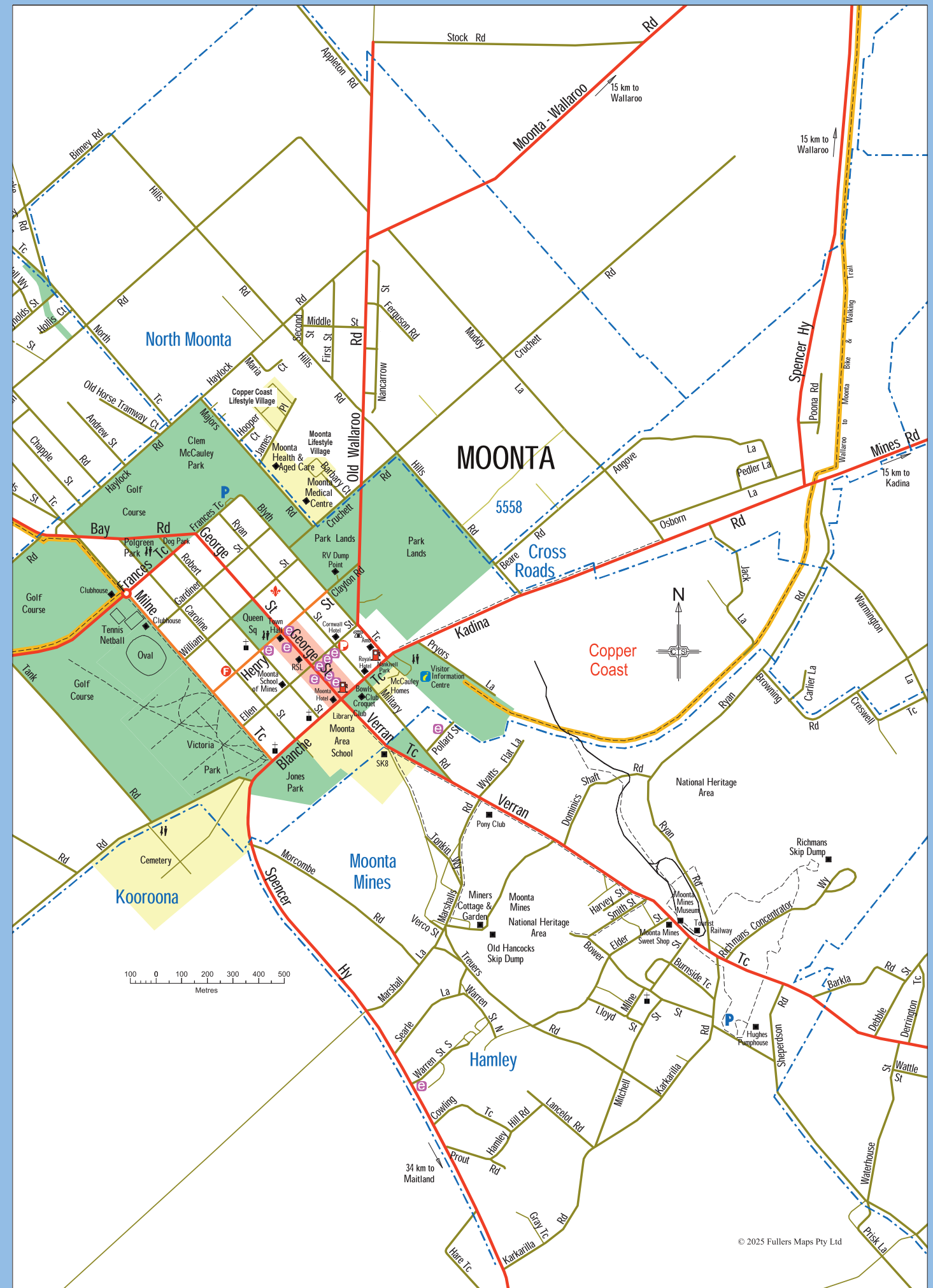
Moonta Visitor Information Centre

Old Railway Station
Blanche Terrace, Moonta
Phone: 8825 1891

Wallaroo Information Outlet

Wallaroo Heritage and Nautical Museum
Jetty Road, Wallaroo
Phone: 8823 3015









Visitor Information Centres

KADINA

50 Mines Road, Kadina

Phone (08) 8821 2333; 1800 654 991

Opening hours:

Monday-Friday 9am-5pm

Saturday, Sunday and Public Holidays 10am-4pm

MOONTA

Corner Blyth & Blanche Terraces, Moonta

Phone (08) 8828 1251

Opening hours:

Monday-Friday 9am-5pm

Saturday, Sunday and Public Holidays 10am-3pm

Website: visitcoppercoast.com.au

Email: visit@coppercoast.sa.gov.au



COPPER COAST
COUNCIL

Lifestyle location of choice



#Visitcoppercoast

