

# Yorke Peninsula's COPPER COAST

2024 VISITORS' GUIDE



COPPER COAST  
COUNCIL  
*lifestyle location of choice*

 1800 654 991  
visitcoppercoast.com.au

YORKE PENINSULA – SOUTH AUSTRALIA



# CONTENTS



WELCOME **4-5**

FEATURE ARTICLES **6-17**

HERITAGE & HISTORY **18-19**

DISCOVER KADINA &  
WALLAROO MINES **20-25**

DISCOVER MOONTA, MOONTA MINES,  
MOONTA BAY & PORT HUGHES **26-33**

DISCOVER WALLAROO **34-39**

DISCOVER YORKE PENINSULA  
& SURROUNDS **40-41**

EVENTS CALENDAR **42-43**

LOCAL SERVICES **44-46**

AREA MAPS **47-51**

Yorke Peninsula  
**Country Times**

The Copper Coast 2024 Visitors' Guide is produced by the Yorke Peninsula Country Times. Words and photos are subject to copyright. We thank those who supplied images © South Australian Tourism Commission, Breanna Smith and Dylan Gaston - Apricot Skies Photography, Sarah King Photography, SA Media Gallery, Copper Coast Council and Yorke Peninsula Country Times photographers Rod Penna and Matt Carty.

# Welcome

to the Copper Coast



## The FARM SHED

MUSEUM & TOURISM CENTRE

50 Mines Road, Kadina  
Phone 08 8821 2333  
visit@coppercoast.sa.gov.au



## The Farm Shed Heritage Museum

Explore the lives of those living in the 1900s through their homes, farms, town and mines  
Guided Group and School Tours available

Open Monday-Friday 9am-5pm  
Saturday, Sunday and  
Public Holidays 10am-4pm





**Yorke Peninsula’s Copper Coast is the perfect location to visit if you’re looking to relax; we have beautiful white, sandy and safe swimming beaches, and great fishing and diving spots.**

The ancestral home of the Nharangga people, the area is also steeped in colonial history, dating back to the peak of South Australia’s copper mining days.

With a population of more than 15,000, the Copper Coast’s main towns of Kadina, Moonta, Moonta Bay, Port Hughes and Wallaroo are just a 150 kilometre, 90-minute drive from Adelaide.

This is an ideal destination for day trips, short or long stays, and there are many attractions, accommodation and dining options.

Copper was discovered near what was to become Wallaroo Mines (Kadina) in 1859 and the now Moonta Mines in 1861.

Cornish miners and Welsh smelters soon made their way to Australia’s Little Cornwall to extract and process the ore; the mines closed in 1923 and Moonta Mines was recognised as a National Heritage Site in 2017.

Nowadays, the Copper Coast’s prosperity is attributed to the wealth of the land which lends itself to a rich agricultural sector.

Great weather, beaches, fabulous fishing and all amenities, including upgraded boat ramps, make this a special place to visit and live.

Vibrant retail businesses and service providers support the local community and people visiting the area.

Enjoy a traditional Cornish pasty, coffee and cake, or a meal at one of the many cafes, bakeries or restaurants.

There are many things for you to experience in the area so please drop into or contact the accredited Copper Coast Visitor Information Centre at 50 Mines Road, Kadina, or the Moonta Visitor Tourist Office in the old Railway Station on Blanche Terrace to plan your stay.

Helpful, friendly staff can provide you with all the up-to-date local information about what to see and do to make the most of your time visiting the Copper Coast.

Relax on the beach, catch some fresh seafood, enjoy the walking and cycling trails, have a game of putt putt, bowls or golf, or explore all the region has to offer.

We encourage you to take your time, escape everyday life and immerse yourself in this “Lifestyle Location of Choice”.

We hope this Visitors’ Guide helps you experience all the Copper Coast has to offer.

**– The Copper Coast Tourism and Events Team**  
**#visitcoppercoast**

## Nharangga Dhura marni Nharangganu Banggara

### Nharangga people welcome you to Nharangga Country

For tens of thousands of years, Nharangga people have lived in harmony with the spectacular lands of Yorke Peninsula. Their Country provided them with food, shelter, water, ceremony and a rich and vibrant culture. They welcome you to share their land and enjoy your stay on Nharangga Banggara.

*– From Tania Wanganeen, Narungga Aboriginal Progress Association*

**Country Getaways**  
HOLIDAY RENTALS

**Getaways to Yorke Peninsula**

**(08) 8832 2623**

- ✓ A one stop shop for accommodation all over Yorke Peninsula
- ✓ A huge variety – budget to deluxe
- ✓ Value for money experiences
- ✓ Professional cleans after every tenancy
- ✓ Local knowledge
- ✓ Easy booking process
- ✓ Online bookings
- ✓ User friendly website



[www.countrygetaways.com.au](http://www.countrygetaways.com.au)



Janet Davies' buckskin Flynn, aka Kerulean Spycraft, was a crowd favourite at the Masters Games last year. He is pictured with Annabelle Crosby, Gabrielle Roberts, Janet, Mary Scott and Catherine Love.



Percy Voigt was the only competitor in the 90+ category for athletics at last year's SA Masters Games and, here, is all smiles as he competes in the shot-put.

## Masters in the sporting spotlight

### The Copper Coast knows how to host the SA Masters Games.

The event broke records in 2021 for the most attendees, with its success a key reason Sports SA brought it back here in 2022.

Now, it's returning for a third time — rolling into the area from Thursday to Sunday, April 11 to 14.

The Copper Coast Sport and Leisure Centre, Kadina, will again be the Games Hub with sports to be played across the major towns.

"Participants loved the area, with many indicating they would be returning for this year's games, which we hope will be bigger and

better than 2022," Copper Coast Council tourism coordinator Lynn Spurling said.

"Our fabulous sporting venues are the envy of many other regions and the enthusiastic sporting groups who assist with running the events.

"Copper Coast is a great place to visit for either a short or longer stay with many competitors travelling with family and/or friends and extending their stay to spend time exploring all we have on offer.

"Accommodation was booked out and businesses were well supported."

Well-liked sports such as athletics, basketball, golf, hockey and lawn bowls will be back again this year, and the list is still growing.

# Lighting the FLAME

**Food, light, art, music and entertainment will again take centre stage for the second FLAME Festival, Friday to Sunday, May 24 to 26.**

Held in alternate years to the Kernewek Lowender, FLAME ensures the Copper Coast is the place to be in the month of May.

"The inaugural festival in 2022 was very successful and attracted more than 10,000 visitors," Copper Coast Council tourism coordinator Lynn Spurling said.

"It is a wonderful chance to celebrate our local talented artists, artisans and products under the theme of food, light, art, music and entertainment."

The first festival's program offered more than 50 events across Kadina, Wallaroo and Moonta.

"Many of the events will once again be in the program with additional items added to make it even bigger and better," Lynn said.

"The community has really come on board with the concept and people are keen to be involved.

"Flaming Fiesta will be held on Friday (twilight/evening) in Victoria Square, Kadina, Wallaroo will host a major event on Saturday

(twilight/evening) and Moonta's main event will be on Sunday to take advantage of the vibrancy of this town on the weekends.

"The Wallaroo Silo Light Show will celebrate FLAME and there will be additional light and fire attractions to delight locals and visitors alike."

Lynn said the event is already an important addition to the local calendar.

"Not only do we have the opportunity to showcase, celebrate and promote our local talent, but it brings visitors to the area outside of our busy summer season contributing significantly to the economy and the prosperity of the Copper Coast," she said.



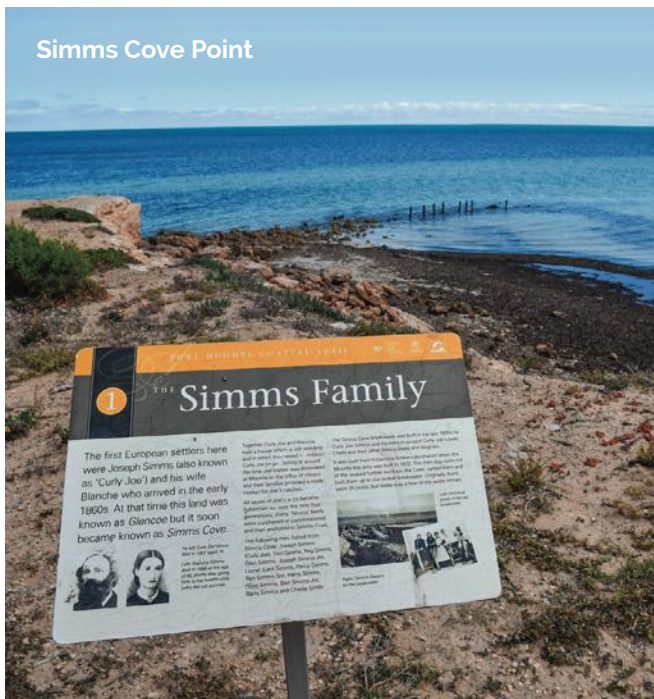


Wallaroo Heritage Trail

# Let's ride

Why not learn more about this historical region and drive or walk around one of the heritage trails on the Copper Coast?

Drop into the Copper Coast Visitor Information Centre, Kadina, Moonta Tourist Office, or Wallaroo Heritage and Nautical Museum and pick up a pamphlet showing the many trails available.



Simms Cove Point

### Kadina Heritage Trail

The trail starts at the old Railway Station and is a leisurely drive of about 12 kilometres which can be completed easily in less than two hours. The trail gives visitors a balanced impression of the history and development of Kadina and surrounding settlements.

### Moonta Heritage Trail

A relaxed drive, covering about 16 kilometres, the Moonta Heritage Trail starts and ends at the Moonta Town Hall and can be completed in two hours or less. The trail gives visitors an enjoyable and well-rounded tour of the history and development of Moonta and adjacent settlements.

### Wallaroo Heritage Trail

Starting at the Wallaroo Heritage and Nautical Museum, this trail is an easy drive of about nine kilometres which can be completed easily in less than 90 minutes. The trail passes many sites of historical interest and gives visitors an impression of the history and development of Wallaroo.

### Moonta Heritage Walk

Many of Moonta's buildings were erected between 1863 and 1875, with many retaining their authentic shopfronts and verandahs. The Moonta Heritage Walk starts and finishes at the Moonta Town Hall and covers many of the town's shops, hotels, banks, the post office, meeting halls and several residences.

### Kadina Heritage Walk

This walk takes in many historical sites including the town hall, churches, hotels and banks. The trail starts and finishes at the heritage-

listed town hall and gives visitors an impression of the history and development of Kadina.

### Wallaroo Heritage Walk

This walk covers the town centre and various buildings, commercial and public, dating back to 1861. Most of the Owen Terrace streetscape was erected between 1864 and 1900 but there have been many changes in the uses of the buildings.

### Wallaroo Smelters Trail

At the base of the Hughes chimneystack near the Wallaroo foreshore is the Wallaroo Smelters Trail. This is a short walk with interpretive signs explaining the early smelting history of Wallaroo.

### Wallaroo Avenue of Honour

Located next to the Wallaroo Town Hall, this trail pays tribute to residents who lost their lives at war.

### Port Hughes to Moonta Trail

A safe and convenient walking and cycling path connecting Port Hughes to the Moonta township.

### Port Hughes Coastal Trail

Located between Simms Cove Point, Moonta Bay and the beautiful sandy South Beach, Port Hughes. Interpretive signs along this coastal trail give an insight into the area's history and you can enjoy the beautiful views out to Spencer Gulf while you walk.

### Rotary Copper Trail (Rail Trail)

See entries in the Kadina and Wallaroo sections for more details

### Wallaroo-Moonta walking/cycling track

See entries in the Wallaroo and Moonta sections for more details.



# True brew

**Authentic connections, quality beer and an easy location make Hedonbar a great place to spend a few hours.**

The craft brewery, located at the Copper Coast Tourism Centre, Kadina, opened its doors in late March 2023.

Owners Rayma and Troy Dennis started their brewing journey on their pilot set-up in their back shed at home in 2019.

Winning first place in the Australian Amateur Brewing Championship for their Schwarzbier in 2021, whilst their scale has increased, the quality has not changed.

"There is a perception that all craft beers are hoppy and fruity -- but that is not the case, we have something for everyone, from easy drinking light coloured lagers and ales, through to amber ales, IPAs, dark ales, stout

and specialty beer styles," Troy said.

"We're so passionate about bringing people into the world of beer, it's so varied.

"We rotate our taps regularly, with seasonal ale and lagers so people can try something new each time they come, or try a bit of everything by purchasing a tasting paddle."

All of their beers are brewed on-site in Kadina and the brewery is on display directly behind the bar. The taproom is a large space with a relaxed atmosphere inside and the beer garden out the front is perfect for those summer days.

"We regularly put on events at the brewery, from Mid-Winter Parties to Oktoberfest celebrations, we want it to be a place people come together", Rayma said.

"We regularly have live music and food vans too, we're always looking to use local businesses where we can."

Hedonbar Brewing offers up to 10 taps of rotating seasonal ales and lagers, including limited release beers. All of the beers are brewed and sold onsite at the brewery and taproom located in Kadina.



# What a show!

**For more than 150 years, the Kadina Agricultural and Horticultural Society has been bringing the community together through its annual show.**

The event, formerly known as the Kadina Show, was renamed in 2021 to make it more inclusive of the whole area.

And it's not the only thing to have changed — with visitors flocking to participate in the two day event.

"In 2019, we had 1100 people through the gate," committee member Natasha Westbrook said.

"Then in 2022, we had 5600."

It's an amazing effort for an event which many considered to be running out of time before the 150th event.

"The 2023 event was the first time we had sites

and attractions asking us to come, it's been quite the turnaround," Tash said.

"We were really aware we needed to have experiences which were free for everyone to participate in, as well as a way to showcase our local agricultural industry, because how else do some people have those experiences?"

The show, like many events, was cancelled during the peak of Covid, but the pause in entertainment came with a surprising blessing.

A federal government grant gave the show society the money it needed to rehabilitate and remove a giant mound from the centre of the showgrounds, opening the space up for use.

"We do get a few visitors attend and what we're starting to see is the minds of locals changing too, which is really important for the viability of the show," Tash said.

"Our motto is 'Showcasing our Community' — we can't do that without local participation.

"We have local food vans where we can, we involve local community groups and charities and we celebrate our locals.

"The Carpet Court Art Prize is a really good example of that, as we've been recognising locals through portraits and the talent of local artists, and we're really looking forward to continuing to grow that.

"The schools' ag program is also a great way we do this, we've even got another two schools joining in for 2024, it really gives them the chance to perfect their skills before the Royal Adelaide Show."

The show committee is a hardworking group between the ages of 30 and 80, and new volunteers are always welcomed.

"They don't just do the show, we host self-contained campers on site as well, and can hire out any of the buildings on site," Tash said.

"There's such an important social aspect to the show, it really brings the community together and we are proud to be part of it."





# Park yourself for a good time

**No matter your age, or your interests, there's a park in the Copper Coast for you.**

From a quiet green space to reflect, playgrounds for the kids or somewhere for your four-legged friends, the area has it all. Copper Coast Council tourism coordinator Lynn Spurling said the well-maintained green spaces are popular with both locals and visitors.

"There really is something for everyone – if you're after a thrill you should visit the Walk in the Trees at Victoria Square, Kadina and if you want to test your biking skills, Newtown Playground or Polgreen Park, Moonta, are for you," she said.

"The little people in my life are really fond of the Wallaroo Adventure Park too.

"We are incredibly fortunate to have so many wonderful spaces for families to enjoy.

"Spaces like McCauley Park and Victoria Park, both in Moonta, are wonderful for exploring and relaxing, while there are also plenty of green spaces around to kick a ball."

Lynn said the best part of visiting a local park is it's entirely free.

"And they're all within close proximity of the towns, so access is easy," she said.

"They're incredibly family friendly and many have received updating recently, including new facilities."





Moonta dog park



Kadina dog park



Wallaroo dog park

# Explore fishing stocks on the Copper Coast

## A huge drawcard for visitors to Yorke Peninsula's Copper Coast is its fishing opportunities.

From beaches and jetties to rocky breaks and boat fishing, there is something for everyone.

But local fishing expert Greg James said it is important to be prepared before heading out.

"One of the most important rules when fishing is to use fresh bait," he said.

"Most bait is frozen, so it is important the freeze has only been once.

"Australian herrings love gents, small cockles and fish flesh, garfish enjoy gents and small cockles/pipis while King George whiting will go for softened squid, cockles/pipis and clickers."

"Yellowfin whiting can be caught using bloodworms, cockles/pipis and clickers and squid are catchable on jigs or by using a small whole fish or a peeled potato on a jig!"

In terms of reeling in your next catch, blue swimmer crabs can be found at all three Copper Coast jetties, Myponie Point, Wallaroo Bay, Warburto Point, West Light and Cape Elizabeth.

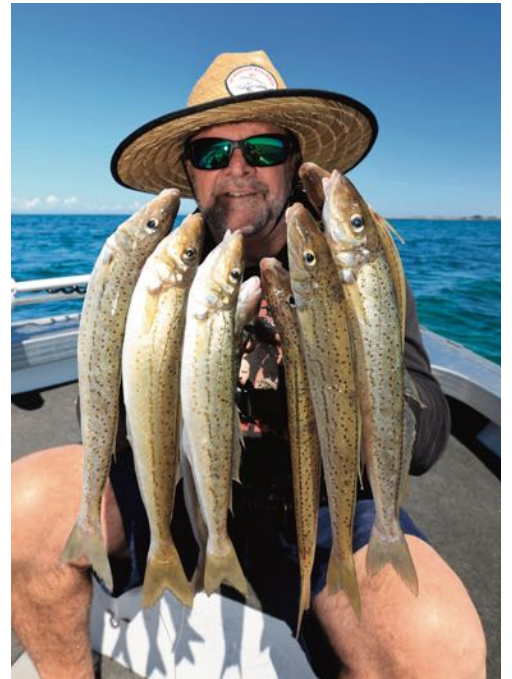
"The Wallaroo jetty is great for Australian herring and Point Riley, Bird Reef, Moonta Bay and Tipara Reef are perfect spots for garfish," Mr James said.

"King George whiting can be found at West Light, Port Hughes, Boiler Ground (Wallaroo) and Cape Elizabeth.

"Yellowfin whiting are often at Coopers Beach, Tickera and Port Hughes while squid are common at Point Riley, Port Hughes and Wallaroo jetties."

If you need an extra hand, don't forget to call into one of the great tackle shops on the Copper Coast.

At the end of the day, you can wash your boat down at the Wallaroo and Port Hughes boat ramps and, if the fish aren't biting, there are several seafood wholesalers who can help you reel in the one that got away.





## Bag limits and size restrictions

### AUSTRALIAN HERRING (TOMMY RUFF)

No minimum size

**40** PERSONAL DAILY BAG LIMIT

**120** Daily boat limit when 3 or more people are fishing on board

### BLUE SWIMMER CRABS

Minimum size: 11 cm between the largest spines

**20** PERSONAL DAILY BAG LIMIT

**60** Daily boat limit when 3 or more people are fishing on board

**BAITING** When using hoop nets or drop nets in marine waters (including from a jetty or boat) you:  
 ✓ **can** use fish or fish-based products in hoop nets or drop nets  
 ✗ **cannot** use any type of meat, chicken or other poultry in hoop nets or drop nets

**RESTRICTIONS** Females with external eggs must be returned to the water immediately

### SOUTHERN GARFISH

Minimum size: 23 cm from tip of the upper jaw to the tip of the tail

**30** PERSONAL DAILY BAG LIMIT

**90** Daily boat limit when 3 or more people are fishing on board

### KING GEORGE WHITING

Minimum size: 32cm from tip of snout to tip of tail

**10** PERSONAL DAILY BAG LIMIT

**30** Daily boat limit when 3 or more people are fishing on board

**POSSESSION LIMIT** is one of the following:  
 72 fish, 10kg of fillets, 36 fish and up to 5kg of fillets when a person has both fish and fillets

### SOUTHERN CALAMARI

No minimum size

**15** PERSONAL DAILY BAG LIMIT

**45** Daily boat limit when 3 or more people are fishing on board

### YELLOWFIN WHITING

Minimum size: 24cm from tip of snout to tip of tail

**20** PERSONAL DAILY BAG LIMIT

**60** Daily boat limit when 3 or more people are fishing on board

## Bag limits and size restrictions

Remember to stick to the legal sizes, bag and boat limits and find out when and where fishing closures are in place.

Keep up to date with the latest fishing rules, regulations and closures by downloading the free South Australian Recreational Fishing Guide smartphone app at [pir.sa.gov.au/recfishingapp](http://pir.sa.gov.au/recfishingapp)

## Boating safety

Every boat operator has a duty of care for their own safety, the vessel, and the safety of people who may be affected by their actions.

Boat speed limits are in place where high-speed boats may be a hazard to other water users.

A four-knot speed restriction applies to vessels within 50 metres of a person in

the water, a vessel or buoy displaying a flag indicating a diver, a person in a canoe, kayak or similar small unpowered recreational vessel, within 30m of any other vessel, within marinas, mooring areas or jetties.

Boat safety also includes carrying additional safety equipment based on the type of vessel, the area of operation, expected water and weather conditions and personal requirements of each passenger.

Lifejackets are important whether you're in a boat, jet ski or even a kayak.

The lifejacket you need — as well as when it must be worn — depends on the vessel, your age, location and the conditions.

For more information, visit [www.sa.gov.au/topics/boating-and-marine/boat-and-marine-safety/marine-safety-equipment](http://www.sa.gov.au/topics/boating-and-marine/boat-and-marine-safety/marine-safety-equipment)

## SEASONAL FISHING CALENDAR

JANUARY-MARCH	APRIL-JUNE	JULY-SEPTEMBER	OCTOBER-DECEMBER
<ul style="list-style-type: none"> <li>• Tommy ruff-herring</li> <li>• Red mullet</li> <li>• Mullet</li> <li>• Salmon/salmon trout</li> <li>• King George whiting</li> <li>• Yellowfin whiting</li> <li>• Blue swimmer crabs</li> <li>• Sand crabs</li> <li>• Snook</li> <li>• Garfish</li> <li>• Flathead</li> <li>• Bream</li> <li>• Squid</li> <li>• Mulloway</li> <li>• Sweep</li> <li>• Velvet Crabs</li> <li>• Trevalley</li> </ul>	<ul style="list-style-type: none"> <li>• Tommy ruff-herring</li> <li>• Red mullet</li> <li>• Mullet</li> <li>• Salmon/salmon trout</li> <li>• King George whiting</li> <li>• Snook</li> <li>• Flathead</li> <li>• Red nannygai</li> <li>• Garfish</li> <li>• Squid</li> <li>• Mulloway</li> <li>• Mackerel</li> <li>• Bream</li> <li>• Sweep</li> <li>• Southern Rock Lobsters</li> <li>• Trumpeters</li> </ul>	<ul style="list-style-type: none"> <li>• Tommy ruff-herring</li> <li>• Red mullet</li> <li>• Mullet</li> <li>• Salmon trout</li> <li>• King George whiting</li> <li>• Yellowfin whiting</li> <li>• Flathead</li> <li>• Bream</li> <li>• Mackerel</li> <li>• Snook</li> <li>• Flathead</li> <li>• Red nannygai</li> <li>• Squid</li> <li>• Trevalley</li> <li>• Mulloway</li> <li>• Velvet crabs</li> </ul>	<ul style="list-style-type: none"> <li>• Tommy ruff-herring</li> <li>• Red mullet</li> <li>• Mullet</li> <li>• Salmon/salmon trout</li> <li>• King George whiting</li> <li>• Yellowfin whiting</li> <li>• Garfish</li> <li>• Mackerel</li> <li>• Snook</li> <li>• Flathead</li> <li>• Blue swimmer crabs</li> <li>• Squid</li> <li>• Kingfish</li> <li>• Trevalley</li> <li>• Southern Rock Lobsters</li> <li>• Trevalley</li> </ul>



Moonta carpark mural



Kadina water tower mural

# An artistic expression

**As Copper Coast's public art installations continue to build, visitors and locals can easily spend the day exploring them.**

Copper Coast Council has developed art trail brochures for each of the three main towns, which are now available through the visitor information centre or online at <https://visitcoppercoast.com.au/arts-and-culture>.

"These trails identify public art pieces and enable everyone to discover and appreciate our talented local artists," Copper Coast Council tourism coordinator Lynn Spurling said.

"The art trails offer the opportunity to experience a wide range of art by our talented local artists and artisans."

As you walk through Kadina, keep an eye out for fairy doors and a photo board in

Victoria Square as well as murals in Graves, Hallett and Goyder Streets.

The town centre also features a huge painting on the old water tower, a nod to the region's copper mining and Cornish past, plus several galleries to explore.

Moonta boasts several photo boards, memorial trails, cultural artworks, historical murals and sculptures, including of local icon and founder of the RAAF Sir Richard Williams.

Wallaroo's works also lend an insight into the history of the town, with the community getting involved with works at Wallaroo Primary School a highlight.

The theme of the Wallaroo silo light show is updated every three months, giving everyone something interesting to see.

These are just a few of the opportunities to enjoy public art on the Copper Coast, which also has several indoor art spaces well worth visiting.



Kadina Jewellers mural



Artist Julie Chesire with her Moonta Rosella mural



Wallaroo old Railway Station mural

## Public art in the Copper Coast

### Kadina

Water tower mural, Kadina Jewellers mural, fairy doors on businesses throughout the CBD, butterfly wings on the side of Helloworld Travel Kadina, stobie pole art and other features at/near Kadina Memorial School, Cracked Pepper mural, Copper Coast Surf blue wave.

### Moonta

Wombats and mosaic seat in Queen Square, Cousin Jack and Jenny mural on Queen Square toilet block, rainbow mural on Nook and Nourish, "Hi, we're at Moonta" mural at the Moonta Tourist Office, Moonta Bay mural near the barbecue area, silhouettes on many street signs, mural at Ellen Street car park, George Street mural, Moonta Area School's Japanese cultural artwork, McCauley Park wood carvings and steel animals, School of Mines mural, Sir Richard Williams statue, Robert Street Rosella mural, old billiards mural on Ellen Street.

### Wallaroo

Wallaroo Silo Light Show, Wallaroo heritage mural, Wallaroo Primary School wall mural, sculpture out from Heritage Drive, mosaics on the foreshore paths, Wildman Street mural, Jones Street mural, Cutter Canberra, Wallaroo Heritage and Nautical Museum, North Beach murals, anchor sculpture, Heritage Drive granite and copper sculpture.

# Exploring our heritage

## **Moonta Mines is one of Australia's most important industrial and cultural heritage sites.**

Combining with Burra to be the Australian Cornish Mining Sites, it was placed on the National Heritage list in 2017 and there is a continuing to push for World Heritage Listing.

At one stage more than 6000 people lived and worked on the mine site, one of the most profitable copper mines in the world.

Mining in the region stopped in 1923 and much of the infrastructure was removed, leaving behind a fragmented legacy of an enterprise which once led the world in mining technology.

The miners who worked the copper ore body mostly came from Cornwall in England and brought with them hard rock mining techniques developed over centuries in the tin and copper mines there, as well as a rich and distinctive culture.

So dominant were the Cornish migrants to Moonta and so strong in shaping the culture of the area, the town became known as Australia's Little Cornwall.

The National Trust has cared for much of the site since 1964.

Former enginehouses, the old school, the tourist train and old lolly shop feature heavily in Moonta Mines' layout.

The school was built for 800 children and now houses tales of the mine and Cornish culture.

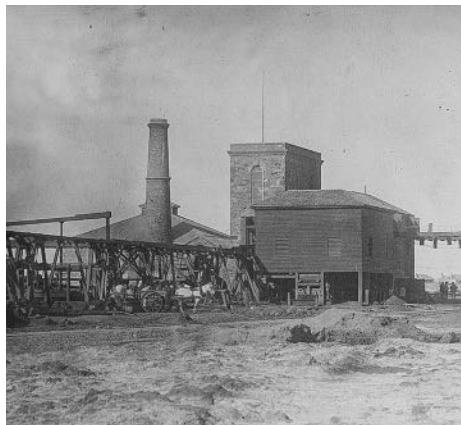
Copper Coast Council has commissioned a conservation management plan for the heritage sites, receiving \$4.8 million from the federal government to progress plans.

The Moonta Mines National Heritage Precinct steering group is working through priorities for the area, with work beginning in 2022.

Initial conservation works of the Hughes and Richmans Enginehouses have now been completed as have some upgrades at the museum.

The steering group has now turned its attention to the second stage of works — a 2.9 kilometre walking trail, beginning at the museum and venturing through the mines precinct.

# About our history



**Top: A conveyer carries ore through the Wallaroo Smelting Works in 1914.**

**Middle: Smoke belches from chimneystacks at the Wallaroo Smelter in about 1940.**

**Bottom: Richmans Enginehouse and Ore Concentrating plant, Moonta Mines, in 1884. The enginehouse was built between 1867 and 1869.**

## Wallaroo Mines

Copper was first discovered by shepherd James Boor on the pastoral lease of Walter Watson Hughes and his brother-in-law John Duncan. The mineral was found almost 10 kilometres southwest of the sheep run station called Wallaroo on December 17, 1859.

Boor found green-coloured stones, which had likely been unearthed by a wombat. He pocketed them and forgot about them for a few days before informing Duncan of his find.

Hughes then secured mineral leases which he named the Wallaroo Mine after his sheep station. He hired four Burra miners and started mining at Home Shaft in February 1860. By the middle of the year, 150 miners were employed and the Wallaroo Mining Company was formed.

By the mid-1860s, the mine was producing 26,000 ton of ore and, at its zenith between 1870 and 1875, it employed 1000 men and boys.

## Moonta Mines

Moonta Mines was the first mining company in Australia to pay £1,000,000 in dividends, which all started when Patrick "Paddy" Ryan discovered traces of copper in May 1861.

Pastoral lease holder Walter Watson Hughes heard of the discovery; a syndicate was formed and members travelled with Ryan to Moonta to see the site.

Hughes lodged a claim in the name of a dummy, but this was rejected.

Hughes returned to Moonta with a surveyor and met Ryan, who showed him where he had found the copper, and the survey information was taken to original shareholder, John Taylor.

Hughes asked mining magnate William Horn if he could get to Adelaide by 9am the next day, and Horn was so keen he rode nonstop for 22 hours, covering 164 miles, and exhausting eight horses.

Taylor and the rival syndicate were both present when the Lands Department opened, but Taylor received first attention and secured the leases, sparking a legal battle that went to the Privy Council, but Hughes settled out of court.

Forming the Tipara Mining Association, which later became the Moonta Mining Co, Taylor started operations in late 1861, with almost 5000 ton of ore being produced in the first year.

Under the management of mine captain Henry Richard "Cap'n" Hancock, the project developed rapidly with around 1200 men and boys employed by 1865 and, in the next five years, more than 5000 people became dependent on the mine, which was producing 20,000 ton of dressed ore, averaging 20 per cent copper.

Moonta Mines employed 1700 people in 1876 and amalgamated with Wallaroo Mines in 1890, by which time ore worth £5,600,000 had been mined.

The new joint company employed an average of 1900 people during its 33 years of operation with employment reaching 2700 in 1906.

## Smelting

The township of Wallaroo was surveyed in 1860, and the foreshore sold as water allotments to the Wallaroo Mining Company for the establishment of smelting works for the ore being mined. The smelters operated until 1923 and, at one time, were the largest smelting works in the world outside of Swansea in Wales.



# Visit Kadina

**More than 5600 people call Kadina home, and there's no surprise as to why.**

The town's central business district is pedestrian friendly, with wide footpaths, ample pedestrian crossings and large car parking areas.

Historical limestone buildings include the Kadina Town Hall, former banks and churches.

Victoria Square is the heart of the town, the beautiful shady parkland providing the perfect spot for a picnic or markets.

Copper Coast Visitor Information Centre offers more than just friendly advice about what you can see and do during your stay. The facility also features a putt putt course, an indoor playground, miniature train rides, a gigantic museum and souvenirs, with a boutique brewery also at the site.

Wallaroo Mines — where copper was first discovered — is a suburb of Kadina, along with Jerusalem, Jericho, Matta Flat and Newtown.

A few relics of the copper mining industry remain, and many old limestone cottages are still lived in today.

## **Anglican Community Cafe, Limestone Gallery and Cornish Garden**

Kadina Anglican Church has created a community cafe, public art gallery and garden in a space next to its op shop in Taylor Street. The Anglican Community Cafe is run by volunteers who serve coffee, tea, milkshakes, homemade cakes, scones, and light lunches. There is also a delicious supply of homemade pickles, sauces and jams. The Limestone Gallery features rotating exhibitions by various artists — all hung on a unique limestone wall of the historical church. All are welcome to enjoy the community garden, linger over an outdoor coffee, relax in the shade and just enjoy the birds in a peaceful setting. The garden makes for a wonderful setting for small weddings. Checkout the op shop while you're there, you're bound to find some treasures.

**Corner of Hay and Taylor Streets, Kadina.**

## **Ascot Community Art Exhibition Gallery**

The Ascot Community Art Exhibition Gallery presents a calendar of changing exhibitors, including local interests, charity groups and visiting artists of various styles and media. There are also periodic exhibitions by Country Arts SA.

**Ascot Cultural Centre, Graves Street, Kadina.**

### Ascot Community Lounge

A great place to rest and relax, meet friends.

**Ascot Cultural Centre,  
Graves Street, Kadina.**

### Copper Coast Indoor Play Centre

The Copper Coast Indoor Play Centre offers a fun, safe, awesome play environment for the young families. Enjoy coffee and a snack whilst sitting back watching the kids play. Located within the Copper Coast Tourism Centre, the play centre is a great place to be no matter the weather.

**Address: 50 Mines Road, Kadina.**

### Rotary Copper Trail walking/cycling track

The Rotary Copper Trail runs from between Powell Terrace and Port Road, Kadina, next to the western roundabout, to Wallaroo. Also known as the Rail Trail, it follows the original train line. The path allows people to walk, run or cycle between the towns without having to negotiate vehicular traffic and has been tremendously received since its official opening in 2018. The Rotary Copper Trail includes informative signs about the Wallaroo Mines, shelter stops and more.

### Copper Coast Visitor Information Centre

The nationally accredited, award-winning Copper Coast Visitor Information Centre is co-located with The Farm Shed Museum, Copper Coast Indoor Play Centre, Copper Coast Putt Putt and miniature trains. The centre prides itself on offering quality souvenirs, locally made produce, local history books and an extensive range of information to assist planning your visit to the region or elsewhere in South Australia. Enjoy a coffee, tea or hot chocolate and sit back while planning your next move with assistance from the friendly staff.

**50 Mines Road, Kadina.**

### Copper Country Keepsakes

Members of the Copper Country Keepsakes artisans' group provide an extensive and exciting range of handcrafted quality art, craft, home decor and country gift items for sale in their gift gallery. The emphasis is on originality, with a high standard of workmanship and friendly service. Copper Country Keepsakes supports local charitable organisations and has been operating for more than 20 years.

**Ascot Cultural Centre,  
Graves Street, Kadina.**

### Copper Coast Miniature Railway

The Copper Coast Old Engineering and Machinery Club runs miniature train rides. This handmade track operates on selected weekends — usually the first and third Sundays of the month — and is a delight for all ages.

**Copper Coast Tourism Centre  
50 Mines Road, Kadina.**



Kadina Rotary Markets



Newtown Bike Track

### Ducatoon Park

Located on one of the most picturesque properties in the region, Ducatoon Park has been a family-run business for 20 years, although its owners have more than 50 years' experience in horse breeding. This boutique horse stud specialises in race horses and rearing foals until yearling stage. Visitors are welcome to view the working stud and may even get the chance to cuddle a newborn foal. Guests are also invited to wander through the extensive gardens, large walk-in bird aviary and the "brag room" which showcases award-winning woodwork. Visits are by appointment.  
**Mines Road, Kadina  
(6km from Kadina towards Moonta).**

### Kadina Rotary Markets

Usually held on the last Saturday of every month in Victoria Square. Goods on offer include fresh produce, art and craft, plants, bric-a-brac, jewellery, tasty hot food products, pottery, homemade cakes and much more.  
**Victoria Square, Graves Street, Kadina.**

### Copper Coast Show

The Copper Coast Show is one of the longest-running shows in the state. This annual two-day event each August provides attractions, entertainment, competitions and exhibitions for all ages. Also available are trade market sites and food outlets to satisfy everyone. As you pass through the newly renovated heritage gates you will be ready for a day of family fun.  
**Agery and Mines Roads, Kadina.**



Copper Coast  
Indoor Play Cafe



Copper Coast Sport  
and Leisure Centre



Walk in the Trees

### Hedonbar Brewing

Sample up to 10 rotating seasonal beers on tap. A small selection of SA gins and wines, and soft drinks also available. Happy hour 4pm-6pm Fridays and live music every Sunday.

**Copper Coast Tourism Centre**  
50 Mines Road, Kadina.

### Copper Coast Sport and Leisure Centre

The revamped Copper Coast Sport and Leisure Centre on Doswell Terrace, Kadina, features four indoor board-floor courts, outdoor courts, an

outdoor playground, squash courts, a gym, a swimming pool and more. Memberships available and casual visits for use of gym and other facilities welcome.

**1 Doswell Terrace, Kadina**

### Parkrun

The world-wide 5km running/walking event is held every Saturday from 8am along Rotary Copper Trail starting at the shelter across from the pony club, just off Airport Road. parkrun is a free event and times are recorded online at [www.parkrun.com.au/](http://www.parkrun.com.au/).

### Yorke Peninsula Veterans and Community Centre

Originally a fish-processing factory, this centre was converted into a modern and well-equipped gathering place in 2005. The Ray Robinson Memorial Military Museum, which displays an impressive collection of World War I, World War II and Vietnam War military memorabilia, reflects the centre's dedication to all those who served in any conflict, anywhere in the world. The collection is being added to continuously through the centre's restoration workshop, donations and permanent loans.

**Copper Coast Highway, Kadina**  
**(2km from Kadina toward Wallaroo).**

### Farm Shed Heritage Museum

The museum brings together some of the fascinating developments and practices of dryland farming. Exhibits show the hardships endured on the land, detailing the process of land clearing, reliving the vital role of animals on farms and exploring the transition from horse to tractor-powered farming. A collection of varied farming machinery is complemented by Kadina history themes. The Wallaroo mine, where copper mining started, was within sight of Matta House, the historical residence which forms part of the museum. Matta House evokes the mining era. Other displays include Life at Wallaroo Mines; They Served, about local service men and women; The Local Newspaper, with giant printing presses; a 1950s rural schoolroom from Kulpara; Her Side of the Story, about women's roles on the farm; and Farmyard, highlighting children's roles on the farm. The farming story starts with a look at many aspects of life for farming families. Interpretive displays follow the process from clearing scrub to sowing grain and the progress towards broadacre cereal farming which sustains Yorke Peninsula. Don't miss the display Sowing the Seed, the harvesting machinery shed, and the vintage tractor and vehicle collection. You will leave with renewed appreciation of how far the Copper Coast has come, and of the tremendous volunteer effort which has gone into creating such high-standard displays.

**Copper Coast Tourism Centre**  
50 Mines Road, Kadina.

### Walk in the Trees

Victoria Square is right in the heart of Kadina, alongside the revamped central business district. Walk in the Trees allows daring children and adults to scale to the top of a webbed rope section and enjoy the view from the treetops before an exhilarating slide back to the ground. Victoria Square also includes the iconic Apex Express locomotive, a large undercover playground, new restroom facilities and a refurbished historical rotunda.



### Copper Coast Putt Putt

The region now has a challenging 18-hole putt putt golf course which boasts an array of eye-catching Copper Coast-themed holes.

**Copper Coast Tourism Centre**  
**50 Mines Road, Kadina**



### Visit a Copper Coast Library – fun for all the family!

Our libraries provide a range of services and activities for all ages in air-conditioned comfort

- Free events and activities
- Free wi-fi and computer access
- Colour printing and copying
- Books, magazines, DVDs, newspapers, eBooks, eMagazines, eAudiobooks
- Home delivery and call & collect services

Copper Coast Libraries are part of the One Card network offering access to library items from public libraries across the state

**COPPER COAST LIBRARIES**



1a Doswell Terrace  
**Kadina 8828 1250**

Blanche Terrace  
**Moonta 8825 1511**

John Terrace  
**Wallaroo 8823 2924**

For further information, opening hours and locations visit [www.coppercoast.sa.gov.au](http://www.coppercoast.sa.gov.au)



# BREATHE TO BELIEVE

Yoga, Pilates, Barre and holistic healing sessions with Kim

Call 0400 184 532 for more information or check out my Facebook page



## YP Veterans & Community Centre

### RAY ROBINSON MEMORIAL MILITARY MUSEUM

Fine collection of World Wars I and II, and Vietnam Military Memorabilia, Memorial Rose Garden

Port Road, Kadina – Open Tues 9am-3pm | Wed 9am-12pm  
Phone 0420 510 970 or 0475 122 677

Entry – GOLD COIN donation

## Kadina Craft & Sewing Centre



Wide range of fabric and craft supplies

- Patchwork • Yarn
- Stockists for Janome sewing machines

Genevieve Bache

29 Graves Street, Kadina 0401 278 412

Mon-Fri 10am-4pm; Sat 10am-noon



WALLAROO, SA

## SELF-CONTAINED 2-BEDROOM CABIN ACCOMMODATION

\*\*Book online through our website\*\*

Fully interactive farm experience for children and adults



0432 268 004

LOCATED BETWEEN KADINA & WALLAROO  
check us out at [www.tarnaseyfarm.com](http://www.tarnaseyfarm.com)



## WOMBAT HOTEL

• ACCOMMODATION • POKIES  
GREAT MEAL DEALS – 7 DAYS!

19 Taylor Street, Kadina 8821 1108

DRINK RESPONSIBLY.

THINK OF THE PEOPLE WHO NEED YOUR SUPPORT. STAY IN CONTROL. GAMBLE RESPONSIBLY. CALL GAMBLING HELP SERVICE 1800 858 858. WWW.GAMBLINGHELPONLINE.ORG.AU



## Anglican Community Cafe, Limestone Gallery, Op Shop and Community Garden

Café, Gallery and Op Shop open Tuesday, Wednesday and Thursday, 10am-2pm. Rotary Market days. Garden open 7 days daylight hours.

Enjoy our hospitality. Serving morning tea, coffee, homemade cake, scones, milkshakes, cold drinks. Light lunches incl. vegetarian. Beautiful garden setting for small weddings. Disabled access and toilet in the café.



Taylor Street, Kadina – across from Victoria Square – All Welcome



**McDonald's Kadina**  
Proudly Supporting  
the Local Community



## Ducatoon Park

"A Superior Thoroughbred Facility"

Located on one of the most picturesque properties in the region. View our working stud or cuddle a newborn foal (seasonal) – visits by appointment only

Mines Road, Kadina  
[www.ducatoonpark.com.au](http://www.ducatoonpark.com.au)

Peter 0408 859 812  
Mark 0408 213 361



## Great coffee, delicious food

Tuesday-Saturday from 10am

Cafe  
Goyder St

4 Goyder Street, Kadina  
Phone: 8821 3027



## THE ASCOT

VISUAL ART EXHIBITION  
KERNEWEK LOWENDER ART PRIZE COLLECTION  
ASCOT COMMUNITY LOUNGE  
COPPER COUNTRY KEEPSAKES



48 Graves Street, Kadina 8821 2404

OPEN MON-FRI 10AM-4PM (SEP-MAY); 10AM-3.30PM (JUN-AUG)

## Yorke Peninsula MARINE

PORT ROAD, KADINA 8821 2604  
[WWW.YPMARINE.COM.AU](http://WWW.YPMARINE.COM.AU)



## MAITLAND MARINE SERVICES

ELIZABETH STREET  
MAITLAND  
8832 2113  
[www.maitlandmarine.com.au](http://www.maitlandmarine.com.au)



MERCURY



## Copper Coast PUTT PUTT

Open daily 10am to 4pm

(closed Good Friday & Christmas Day)

\$5pp to play

Located at the

Copper Coast Visitor

Information Centre

50 Mines Road, Kadina

Phone 8821 2333





**Chappy's Place**

- ALL-DAY BREAKFAST
- LIGHT LUNCH
- GLUTEN-FREE OPTIONS
- BARISTA-MADE COFFEE

**OPEN MON-SAT**

**Rosie's** Australia's Tastiest Chicken

20 Graves Street, Kadina 8821 1704

**YORKES MEAT & SMALLGOODS**

Award winning smallgoods, high-quality meats with good old-fashioned service!

20 TAYLOR STREET, KADINA 8821 1019

**ROYAL EXCHANGE HOTEL**

Open for lunch and dinner 7 days  
Bookings encouraged

7 Digby Street, Kadina 88211084

DAILY LUNCH & DINNER SPECIALS

**SPORTSPOWER**

YOUR LOCAL EXPERTS™

4 Digby Street, Kadina 8821 1498  
Email: kadina@sportspower.com.au

**COPPER COAST INDOOR PLAY CENTRE**

50 Mines Road Kadina 8821 2333

Open daily 10am-4pm  
(ex. Good Friday and Christmas Day)

Under 12 months FREE  
1-2 years \$4; 3-10 years \$6

Don't forget to wear socks!

GREAT FUN FOR THE WHOLE FAMILY!

**Pharmacist Advice**

**Copper Coast**

Opening Times  
Monday-Friday 8.30am-6.30pm  
Saturday 8.30am-2pm  
Sunday and public holidays 10am-2pm

77-79 Port Road, Kadina 8821 2600

Drink responsibly

**LOCALLY CRAFTED BEERS**

Open Friday-Sunday

50 MINES ROAD, KADINA

www.hedonbar.au

Check online for extended holiday trading

**HEDONBAR BREWING COMPANY**

**SAWLEY'S**

**AUTO & MARINE**

**CONNECTING THE COMMUNITY TO LEISURE**

- Health club • Group fitness • Hydrotherapy and swimming lessons
- Four-court stadium • Squash courts • Meeting/function rooms • Café

1 DOSWELL TERRACE KADINA 8821 3106

**COPPER COAST** sport and leisure centre

**Marine and automotive retail products**

Marine servicing/repairs  
**OUTBOARD INBOARD JETSKI**  
Large vessel retrieval and maintenance  
**ANTIFOUL PROPSPEED RE-POWERING**  
Automotive servicing - 4x4 upgrades and fit-outs

**www.sawleysautoandmarine.com.au**  
PHONE 0412 532 984 | 33 KENNETT STREET, KADINA

# Visit Moonta, Moonta Mines and Moonta Bay

**Home to about 12,000 people during its mining heyday, Moonta had the largest population in the state outside of Adelaide during the 1870s.**

Many of Moonta Mines' iconic structures still exist today and are protected by State and National Heritage Listings.

The area, now home to 5194 people, is more

than just its history. Moonta, Moonta Bay and Port Hughes are regarded highly for their sweeping white beaches, boat-launching facilities for fishers and the shady Queen Square with its memorials and wombats.

The always-bustling central business district and numerous acclaimed eateries are always a highlight.

Moonta, Moonta Mines, Moonta Bay and Port Hughes offers something for everyone.





### **Horse-drawn Tram**

Visitors can view a restored horse-drawn tram through an observation window at the Moonta Mines Tourist Railway platform, near the Moonta Mines Museum car park.

**Verran Terrace, Moonta Mines.**

### **Hughes Enginehouse**

Hughes Enginehouse is one of Moonta's iconic buildings and features prominently in almost all Moonta promotional material. It was built between 1863 and 1865, and was a significant contributor to the success of the Moonta Mining Company, its function being to pump water from the underground workings on the largest ore bodies. The Cornish-beam pumping engine pumped water from the adjacent shaft at a depth of 366 metres, and from Taylor's Shaft 300m to the north at a depth of 768m, until the mines closed in 1923.

**Moonta Mines (follow signs from Verran Terrace).**

### **Moonta Bay jetty**

The long L-shaped jetty is well worth the visit when you are at Moonta Bay. Upgraded in 2012, the jetty provides a perfect spot for recreational fishing. The catch of the day may include Australian herring (tommy ruff), garfish and squid, especially towards the late afternoon and evening when the tide is on the way in. There is a recently upgraded swimming enclosure which can be accessed via the jetty. The Moonta Bay beach is located directly in front of the Moonta Bay Caravan Park, and is a lovely sandy beach suitable for all ages. When the tide goes out there is plenty of beach to play on and shallow rock pools to explore. On the south side of the Moonta Bay jetty the white, sandy beach extends all the way to Port Hughes.

### **Moonta Mines Sweet Shop**

Many consider the number one place to visit on the Copper Coast to be the Moonta Mines Sweet Shop. Located in the old Moonta Mines Post Office, this well-stocked sweet shop features a large variety of old-fashioned drinks and sweets.

**Verran Terrace, Moonta Mines.**

### **Miners Cottage and Garden**

Opened by the National Trust as a museum on October 9, 1967, the cottage is preserved for the present and future generations so they may appreciate the way Cornish families lived in the area without reticulated water or electricity. Step back in time and see the pioneers' way of life. The cottage and its magnificent garden are lovingly tended by a group of enthusiastic volunteers.

**Verco Street, Moonta Mines.**

### **Moonta Gallery of the Arts**

Moonta Gallery of the Arts is all about keeping the arts alive. The gallery has a different exhibition each month with most exhibitions having their own opening events. Exhibitions range from local to internationally renowned artists with a range of themes and styles. Contact the gallery for information about upcoming opening nights and exhibitions. Most artwork is for sale.

**Moonta Town Hall, George Street, Moonta.**

### **Moonta Mines Museum**

Moonta Mines Museum is in the former Moonta Mines Model School which once had almost 1250 pupils. It houses displays depicting the old Cornish lifestyle including mining, sports and pastimes, military, music, homewares, clothing and photography. There is an interesting collection of equipment from many of the lodges and guilds of old Moonta, as well as a refurbished classroom.

**Verran Terrace, Moonta Mines.**



### **Splash Town Water Park**

Located at Moonta Bay near the jetty and safe swimming enclosure. On offer is free entry to a whole lot of fun – racer slides, water mushrooms and wading pools. Changing and toilet facilities are available on site. Splash Town is open October to May. For opening days and hours, contact the Copper Coast Visitor Information Centre on 8821 2333, or visit the Facebook page [www.facebook.com/splashtowncoppercoast](https://www.facebook.com/splashtowncoppercoast)

### **Moonta Mines Tourist Railway**

A trip on the hugely popular, award-winning tourist train leaves from the station located in the Moonta Mines Museum car park. It takes passengers on an entertaining 50-minute guided tour through the historic landmarks of former mining operations. Sit back and listen to the history of the region and the stories of the world-renowned Cornish miners, the workings of the mines and ore sorting floors, reservoir and the tunnel through Ryans Tailing Heap, as well as other interesting tales.

**Verran Terrace, Moonta Mines.**

### **Moonta-Wallaroo walking/cycling track**

The newest addition to the Copper Coast's active attractions, the Moonta to Wallaroo track starts at the tourist office and winds its way along the old railway line to Wallaroo, where it heads along Cornish and Park Terraces to Ryan Street.

### **Moonta School of Mines**

Moonta School of Mines has a helpful group of friendly volunteers who have years of experience and are able to help research family history. There are also equipment and facilities to help visitors research their own family history and discover their Cornish ancestry. There are interesting displays and collections to see, including an extensive medical display, working mine models and many old photographs.

**Ellen Street, Moonta.**

### **Richmans Enginehouse**

This enginehouse was designed and erected by Frederick May in 1869 and was constructed using stone from local Moonta Bay beaches. The main purpose of the enginehouse was for hauling, pumping and crushing, and it was continually used to process and concentrate copper ore until the mines closed in 1923.

**Moonta Mines (follow signs from Verran Terrace).**



### Tailing Heaps

Another remnant of bygone mining operations, Richmans, Ryans and Hancocks Tailing Heaps contain what was left of the ore after it had been concentrated to be sent to Wallaroo for smelting.

**Richmans Concentrator Way, Ryan Road and Verco Street, Moonta Mines.**

### Moonta Mines Methodist Church

The stone Moonta Mines Methodist Church was erected by Wesleyan Methodists in 1865, and the foundation stone was laid by local mining icon Cap'n Hancock. A gallery was added in 1872, giving the church a seating capacity of 1250. A pipe organ was purchased in 1890 thanks to a donation from Cap'n Hancock. The building was purchased by Field of Dreams Church in July 2022.

**557 Milne Street, Moonta Mines.**

### Secret Garden

The secret garden is a much-loved local spot which has been beautifully maintained by residents. It features a separate grassed area, accessed by steps, in a shaded natural area suitable for picnics and is very popular for small weddings. There is seating suitable for children around part of the grassed area. A path leads all the way to the Moonta Bay foreshore.

**Kemp Place, Moonta Bay**

### Old Railway Station

Home to the Moonta Tourist Office, this beautiful building at the entrance to the town is more than 100 years old. Pamphlets and maps of the area are available. Quality souvenirs, giftware and many books relevant to Moonta's history can also be found here. Whilst in the grounds, take time to see the World War I trophy gun and learn about its history.

**Blanche Terrace, Moonta.**

### The Blacksmith Shop

This working display at Moonta Mines provides visitors with a view of an operating traditional blacksmith shop from back in the copper mining days. Handcrafted items are available for purchase.

**Verran Terrace, Moonta Mines.**

### Queen Square Markets

Crowds flock to the Moonta Country Markets in Queen Square. Stallholders sell crafts, toys, collectables, jewellery, books, produce and bric-a-brac. There is plenty of food and drinks available, including baked goods and homemade produce. Road tram rides available around the town.

**Queen Square, Moonta.**

### Food, glorious food

Moonta, Moonta Bay and Port Hughes are filled with wonderful options to stop and have a bite. From a classic Cornish pasty or baked goods, pub favourites, fish and chips, beautiful breakfasts and locally sourced produce, there is something for everyone.



**DISTINCTIVE HOMES**  
Lic No G10420

Leading SA Builder

Local consultant, Marion Noack looks forward to assisting you  
**Call 0419 039 863 or email marion@distinctivehomes.com.au**  
 ✓ Family Homes ✓ Retirement and Investment Properties

**Fashion for all the birds!**

Country to coastal, casual to cocktail

*Gorgeous fashion, shoes & accessories*

Sizes 8-22

**Stylish Bird Boutique**  
57a George St, Moonta 8825 3093

**QUEEN SQUARE MARKET**  
MOONTA, SA

2024 MARKET DATES

- Sunday, 10th March
- Sunday, 31st March
- Sunday, 9th June
- Sunday, 6th October

75 George Street  
MOONTA  
0438 812 603  
queensquaremarket5558@gmail.com

— STALLS —  
— LOCALLY MADE PRODUCE —  
— FOOD TRUCKS —

**Capella's**  
EST 2010 MOONTA, SA

**OPEN 7 DAYS LUNCH and DINNER**

Dine in, takeaway or delivery available\*  
(Delivery conditions apply)

**Indoor and alfresco dining** –  
Book your table via Facebook or  
www.cafecapellamoonta.com

**Takeaway orders** –  
phone or order via **Boppl**

1 Henry Street, Moonta  
**8825 1081**

**City slickers, country bumpkins & beach bums...**

**WE HAVE YOUR NEXT BUILD COVERED!**

URBAN | RURAL | COAST

**1300 805 505**  
countrylivinghomes.com.au

**COUNTRY LIVING HOMES**  
Est. 2006

BLD 194214

**copper coast Lifestyle village**

Copper Coast Lifestyle Village is a fun and sociable over 55's retirement community situated in the beachside suburb of Moonta adjacent to all medical services and within easy access to beaches, fishing, cafes and the Moonta town centre.

*You'll love the relaxed and happy lifestyle with unrivalled facilities and maintenance free living!*

**A better lifestyle choice**

P (08) **8132 0232** coppercoastlifestylevillage.com.au 7 James Place, Moonta

# Visit Port Hughes

Port Hughes is home to tremendous fishing, a top-quality, Greg Norman-designed golf course, and everything you need for a seaside stay.

The Port Hughes Coastal Trail begins at Simms Cove and is a great way to take in the scenery while learning about the town's history.



South Beach, Port Hughes



## Port Hughes jetty

The jetty is a great spot for fishing and blue swimmer crabs, Australian herring (tommy ruff), garfish and squid are just some of the species on the menu.

## Port Hughes boat ramp

One of the busiest ramps in the state, Port Hughes has six lanes for launching and retrieving, as well as ample parking and wash-down facilities.

## South Beach

South Beach has a reputation as one of the state's most pristine stretches of seashore, and is just one portion of the beautiful coastline Port Hughes has to offer.

## Simms Cove

Simms Cove, between Moonta Bay and Port Hughes, offers views of both jetties and, as you look out over the Spencer Gulf, you can see Eyre Peninsula. Stairs either side of the headland allow you to walk from Moonta Bay to Port Hughes, even at high tide.

## Port Hughes Memorial

The Friends of Port Hughes fundraised to create a monument on the Port Hughes foreshore to remember the men and women who lost their lives in the waters off Port Hughes and Moonta Bay. There are 23 names on the memorial and their stories are featured in a book, available at the Port Hughes General Store.

**Port Hughes foreshore.**

## HOME, FASHION, LIFESTYLE

- Homewares • Clothing • Baby and kids • Jewellery
- Locally made products • Accessories

Shops instore or online

[THEMOONTACOLLECTIVE.COM.AU](http://THEMOONTACOLLECTIVE.COM.AU)

59A George Street, Moonta 0438 812 603




**Compleat Angler** *Let's go fishing!*

3 Owen Terrace, Wallaroo Phone 8823 2840 | 10 George Street, Moonta Phone 8825 3400

[www.compleatanglerwallaroo.com.au](http://www.compleatanglerwallaroo.com.au)

**OPEN 7 DAYS**



**SEAGATE MOTEL**  
Beachfront suites and event space

171 Bay Road, Moonta Bay | Phone 8825 3270 | Email [info@seagatemoontabay.com.au](mailto:info@seagatemoontabay.com.au)  
[www.seagatemoontabay.com.au](http://www.seagatemoontabay.com.au)

**THE PORT HUGHES TAVERN**

MINNIE TERRACE  
**8825 2640**

**OPEN 7 DAYS**

- LUNCH AND DINNER WITH SEA VIEWS
- STONE GRILL
- ALFRESCO

THINK OF THE PEOPLE WHO NEED YOUR SUPPORT. GAMBLE RESPONSIBLY. CALL GAMBLING HELP SERVICE 1800 858 858. WWW.GAMBLINGHELPSERVICE.ORG.AU



## SPLASH TOWN – COPPER COAST

### Free entry to a whole lot of fun!

Splash Town offers a safe swimming enclosure, racer slides, water mushrooms, wading pools, changing and toilet facilities.  
Check Facebook for opening times and other information.

Bay Road, Moonta Bay 8821 2333  
[visitcoppercoast.com.au](http://visitcoppercoast.com.au)



# MOONTA GALLERY OF THE ARTS

Open daily from 11am to 3pm  
Corner George and Henry Streets, Moonta  
Email [moontagalleryarts@coppercoast.sa.gov.au](mailto:moontagalleryarts@coppercoast.sa.gov.au)




National Trust

## Visit Moonta Mines

### A National Heritage Place

Moonta Mines Museum - Train rides - Sweet Shop  
Blacksmith - Miner's Cottage - History Centre


All venues open daily during school holidays and public holidays. For more information come to the Moonta Tourist Office open daily 9am - 4pm, Blanche Terrace, Moonta.  
Phone : 08 88251891 Email : [info@moontaheritage.com.au](mailto:info@moontaheritage.com.au)  
[www.moontaheritage.com.au](http://www.moontaheritage.com.au)

## NEWBERY CHEMISTS

TIM GROSS & PARTNERS

**Kadina** – 24 Graves Street 8821 1055  
**Moonta** – 8 George Street 8825 2063  
(Moonta open 7 days per week)  
**Wallaroo** – Shop B, 2 Owen Terrace 8823 2524  
**Snowtown** – 1 South Terrace 8865 2298

[www.newberychemists.com.au](http://www.newberychemists.com.au)  Find us on facebook.




**DINE IN OR TAKE AWAY**

- Bookings recommended
- Walk-ins welcome
- Functions and catering available on request

For current opening times and specials visit our Facebook page  
**Phone 0432 284 508**  
Moonta Football Clubrooms, Milne Terrace, Moonta 



✓ EFTPOS, SATSS and Cabcharge accepted  
 ✓ ELGAS agent ✓ Kadina Trailer Hire  
 ✓ Swap 'n' GO Gas bottles and appliances

**24 HOURS A DAY**  
**7 DAYS A WEEK**

**COPPER TRIANGLE TAXIS** **8821 3444**



ELGAS DISTRIBUTOR  
 KADINA TRAILER HIRE  
 LIKE US ON FACEBOOK

**YP Quilting Fabrics**  
 26 George Street, Moonta  
 Mon-Fri 9.30am-4.30pm; Sat 10am-2pm  
 0488 948 223

**Quilting fabrics and sewing supplies**

- Classes available
- Sit and sew day and night sessions
- Sewing and mending
- Juki sewing machines

...MOONTA...

**ANTIQUES & COLLECTABLES**

*Open 7 days!*

LARGE RANGE OF BRIC-A-BRAC AND FURNITURE

41 George Street, Moonta  
 Phone 8825 2705

"You've never travelled until you've been to Moonta"

**Unique and innovative gifts for all occasions**

**Gift Affairé**

22 George Street  
**MOONTA**  
 8825 1001

BUY ONLINE OR IN STORE

www.giftaffaire.com.au



**taste the yorke**

Regional - Seasonal - Local

- "Original" Cornish pasty • Gifts
- Coffee and cakes • Local produce
- Cooked breakfast till 1.30pm
- Focaccia or wraps and croissants till 4pm

**7 DAYS**

**56B George Street Moonta 0490 803 970**  
 email: info@tastetheyorke.com.au

**Henry on Yorkes B&B**  
 Adjacent to Taste the Yorke  
 www.countrygetaways.com.au



**Copper Trails BIKE HIRE**

Your local bike shop  
 Open 7 days

- E-Bike & Bicycle Sales
- Hire
- Service
- Accessories
- Parts

40 George Street, Moonta  
 Mob: 0447 764 777

2023 South Australian Tourism Awards WINNER  
 2022 South Australian Tourism Awards FINALIST



**WE LOVE MOONTA BAY.**

**YOU'LL LOVE THE LIFESTYLE!**

At Moonta Bay Lifestyle Estate you can have a brand-new home in our vibrant community of over 50's. Bring your gear, the lifestyle sites have enough space for your boat or caravan in your backyard. Plus there's the resident Clubhouse for when you feel like getting social.

We'd love to show you around.

**MOONTA BAY LIFESTYLE ESTATE**  
*live this life!*

Entry via Willard Street, Moonta Bay.  
 Phone 08 8825 3716  
 moontabaylifestyle.com.au • Find us on

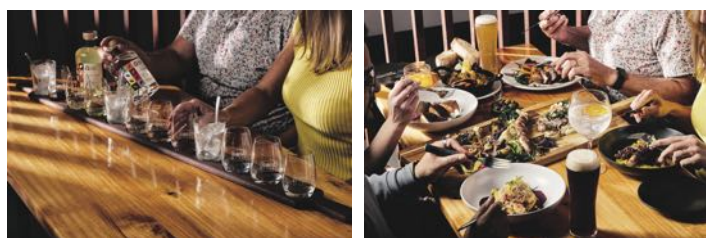


\* Correct as at December 2023. Subject to terms and conditions.

RESTAURANT | DISTILLERY | MICROBREWERY



Enjoy our crafted  
beers, awarded gin  
and amazing food



13 OWEN TERRACE  
WALLAROO 8823 3809

WALK-INS WELCOME | BOOKINGS RECOMMENDED

[WWW.BONDSTORE.NET.AU](http://WWW.BONDSTORE.NET.AU)





# Visit Wallaroo

**Where else but Wallaroo can you drive onto the beach, step out of the car and feel the sand between your toes?**

Wallaroo features popular spots to eat, stay and shop, including the Wallaroo Shopping Centre. Its shipping terminal caters for international grain needs and shares the picturesque foreshore with ideal spots to fish, swim or just relax.

Wallaroo was once the second busiest port in South Australia, mainly due to mining and smelting. Many historical buildings of that time are preserved.

There is plenty of accommodation to suit all tastes and budgets ranging from inexpensive stays to tourist parks, group accommodation, luxury apartments and holiday rentals.

People visit for the boating, fishing, coastline, walking trails and all the things that make a seaside resort, as well as to take in the town's history and association with the past.

## **Wallaroo beaches**

Wallaroo has a number of beaches including Office Beach, North Beach and Sailing Club Beach. All are great for swimming. North Beach is one of the few beaches in South Australia on which a vehicle can still be driven. Wallaroo is also popular for scuba divers and snorkelers. For those looking for the ultimate day's fishing, Wallaroo is an ideal destination.

## **Rotary Copper Trail walking/cycling track**

The Rotary Copper Trail between Wallaroo and Kadina allows people to walk, run, cycle or use their mobility aids without having to negotiate vehicular traffic. The track starts with the Wallaroo Avenue of Honour which recognises those who lost their lives in war, located near the Wallaroo Town Hall. It then stretches along the original railway line to Kadina with informative signs, shelter stops and sights along the way.

## **Wallaroo-Moonta walking/cycling track**

The newest addition to the Copper Coast's active attractions, the Wallaroo to Moonta track starts on Ryan Street, Wallaroo, before heading along Cornish and Park Terraces to meet the original railway line. The track finishes at the Moonta Tourist Office.

## **Bond Store**

The Bond Store breathed new life into one of Wallaroo's most historic buildings. Formerly Elands Bonded Store, the Bond Store is the Copper Coast's first microbrewery and distillery. Since opening its doors in 2019, the Bond Store has been serving quality tapas menus and drinks.

**Owen Terrace, Wallaroo**



North Beach  
playground

### Walleroo Community Sports Club

The multi-million-dollar Wallaroo Community Sports Club opened in 2011, and is located alongside the 18-hole irrigated Wallaroo Golf Course. The centre is now the home for the Wallaroo Golf, Croquet and Bowling Clubs. It features indoor carpeted rinks, a bar and a function centre which can seat 300 people. The sports club is open for meals some evenings.

**Cornish Terrace, Wallaroo.**

### Walleroo Guided Walking Tours

Take a historical walk around Wallaroo and learn more about the many buildings on the SA Heritage Register. Tours are offered during peak tourism times or group bookings can be arranged by appointment. Departing from the Wallaroo Heritage and Nautical Museum, this tour takes about 90 minutes.

**Jetty Road, Wallaroo.**

### Walleroo Sailing Club

Walleroo Sailing Club is the place to be if you have a love for sailing or if you enjoy being near the sea. During summer, racing starts at 2pm most Sundays, and the club is the ideal spot to watch the various classes of boats sailing around Wallaroo Bay. If you are new to sailing, the club offers learn-to-sail courses on Sundays. Friday night is social night with full bar facilities and meals available. Other activities available include radio-controlled yachts on Tuesday mornings and Thursday evenings during summer. Visitors are welcome any time.

The venue is available for hire for conferences, weddings and other private functions, phone 0411 268 924. For more information, visit [www.revolutionise.com.au/wallaroosailing](http://www.revolutionise.com.au/wallaroosailing)  
**Heritage Drive, Wallaroo.**



### Walleroo jetty

Walleroo jetty is 867 metres long and has three berths each side to accommodate large freighters which utilise the significant bulk grain handling facilities. Pristine waters provide a haven for multitudes of marine life including garfish, squid and whiting.

### Tarnasey Farm

Experience farm life and get up close and personal with animals including chickens, cows, sheep, horses and more. Located between Wallaroo and Kadina, Tarnasey Farm features Little Farmer Tours by appointment. Come for a visit or stay in Tarnasey's accommodation cabins. Parents/carers can relax in deluxe but affordable accommodation and know their children are in a safe and fun environment. A farm tour and animal feeding experience are included with every stay.

**2015 Ellis Road, between Wallaroo and Kadina.**

### Walleroo Information Outlet

For visitor information, visit the Wallaroo Heritage and Nautical Museum.

**Jetty Road, Wallaroo, phone 8823 3015.**

### Walleroo Heritage and Nautical Museum

This fascinating museum is in the town's first post office, built in 1865, and provides an important insight into the early activities of this historical port. The museum consists of displays highlighting Wallaroo's unique heritage. The extensive displays cover the copper smelting era (1861-1923), maritime, shipwrecks, railways, postal and telephone history, local religious life, civic affairs, entertainment, sport, the war years and general local history. The days of sail are illustrated in the large nautical section where visitors can follow the close links the area had with copper mining and smelting, agriculture and the sea. The history of the port of Wallaroo is depicted with more than 70 large ship models, photographs, documents, relics and old record books. An intriguing exhibit is George the giant squid, found inside the stomach of a whale caught off Albany, Western Australia, many years ago.

**Jetty Road, Wallaroo.**

### Food, glorious food

Fish and chips at the beach, a pizza to share or hot coffees and delicious breakfasts — Wallaroo is a culinary delight. The seven pubs around the town are a perfect spot to refresh yourself after a long day exploring.



Coopers Alehouse



North Beach



Bond Store



Wallaroo foreshore

## St Mary MacKillop School WALLAROO

Welcomes you to  
the Copper Coast

(08) 8821 5800  
[info@stmm.catholic.edu.au](mailto:info@stmm.catholic.edu.au)  
[www.stmm.catholic.edu.au](http://www.stmm.catholic.edu.au)

– Proudly providing R-9 Catholic education on the Copper Coast –  
 Speak with our Principal to discover what St Mary MacKillop School has to offer your child

# Fat G's

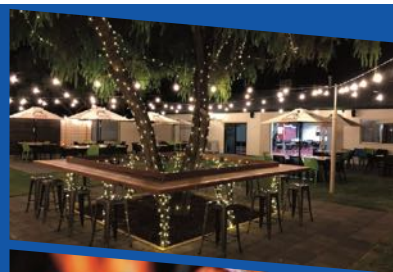
PIZZA, PASTA, ETC.

PHONE (08) 8823 3818

SHOP 4/2 OWEN TCE  
WALLAROO

OPEN 7 DAY  
EXCL SOME PUBLIC HOLIDAYS

SCAN TO  
FIND OUR  
MENU ON  
FACEBOOK



### The Anglers Inn Wallaroo

- Anglers Inn bistro features great traditional pub dining with chargrill steakhouse
- Sports bar featuring Fox Sports and TAB facilities
- Huge NEW beer garden
- 20 gaming machines
- Kids' play room
- 20 Motel Units
- Liquor Legends - Largest drive-through bottleshop on YP



### Liquor Legends

Liquor Legends  
Retailer Of The Year  
2023

HOTEL  
Open 7 Days 11am till late  
Bottleshop  
10am till 8pm daily  
Bistro 7 Days  
12-2pm & 6-8pm

www.anglersinn.com.au  
P 8823 2545

9-11 Bagot Street, Wallaroo

Think of the people who need your support.  
Gamble responsibly. Call gambling help service  
1800 858 858 www.gamblinghelpline.org.au  
Drink responsibly



## Seaside Vet Surgery

• Dr Natalie Wakeham • Dr Amanda Bunney

24 John Tce, Wallaroo Tel 08 88 233 233

seasidevet.com.au



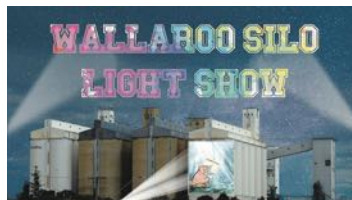
## Bev's Retreat B&B

Garden Cottage (Circa 1900) set in the 1940s  
with modern amenities

- ✓ Walking distance to beach, shops and hotels
- ✓ Family friendly ✓ 3 bedrooms sleeping 6
- ✓ Tariff reduces with longer stays ✓ Pets welcome



12 SCOTLAND STREET, WALLAROO | PHONE BEV on 0438 520 670  
E: silver.services@bigpond.com | www.bevsretreat.websyte.com.au



### NIGHTLY SHOW ON THE WALLAROO SILOS AFTER SUNSET

(20 minute countdown before the show)

Best viewing from Jetty Road

Tune in to 88.3 FM for audio

### Year Round Show Times

MONTH	COUNTDOWN BEGINS	SHOW STARTS
January	8.40pm	9pm
February	8.25pm	8.45pm
March	7.55pm	8.15pm
April (D/S Time)	7.25pm	7.45pm
April (Stand Time)	6.10pm	6.30pm
May	5.40pm	6pm
June	5.25pm	5.45pm
July	5.40pm	6pm
August	6.10pm	6.30pm
September	6.25pm	6.45pm
October (Stand time)	6.25pm	6.45pm
October (D/S time)	7.55pm	8.15pm
November	8.25pm	8.45pm
December	8.40pm	9pm

# Wallaroo

## HOLIDAY PARK

### Relax and indulge in an idyllic family lifestyle

- Beachfront units/sites • Pet friendly (on sites only) • New camp kitchen
- Free wi-fi • Kiosk, barbecue area • Playground • Café/Restaurant
- Bouncy pillow • Disabled facilities • Bike track • Games room
- Petting zoo • Hire equipment – go-karts, kayaks, stand-up paddleboards

### Pamir Court, Wallaroo



Phone 8823 2531

Email stay@wallaroholidaypark.com.au

Web www.wallaroholidaypark.com.au



Your host: Michael Byrne and team of friendly staff



G'DAY  
PARKS

G'DAY  
REWARDS



# Sonbern Lodge Motel

**Quality accommodation** Review Rating ●●●●○  
 Quality accommodation in the heart of Wallaroo. Standard and Deluxe rooms, all with ensuite, s/s r/c air-conditioning, LCD TV, microwave, tea/coffee making. Free wi-fi, off-street parking. "Cabins available". Easy walking to beach, jetty, supermarket, shops, dining and cafes. We provide quiet, comfortable accommodation at a realistic price (no bar or pokies).

**18 JOHN TERRACE, WALLAROO 8823 2291**  
 E: sonbernlodge@internode.on.net W: www.sonbernlodgemotel.com.au



## COME AND DISCOVER WALLAROO'S HIDDEN GEM

✓ GREAT BEER ✓ GREAT SERVICE ✓ GREAT ATMOSPHERE

- Dinner Thursday-Saturday 6pm-8pm
- \$6 pints\* 4pm-6pm every day
- Function room available for hire  
 birthdays, anniversaries, Christmas  
 – bookings required

THE  
**WALLAROO HOTEL**

POKIES

26 ALEXANDER STREET **WALLAROO 8823 2444**



## WALLAROO HERITAGE & NAUTICAL MUSEUM

Jetty Road, Wallaroo

Four large buildings showcasing Wallaroo's history  
**See 'George' the Giant Squid!**  
 Heritage displays, souvenirs and information

Open daily  
 10am-4pm



For group bookings/enquiries  
 Phone 8823 3015  
<https://wallaroocommunity.com.au/attractions-museum>

ELECTRICAL

# NRG

SOLUTIONS

ECL201856

**■ INSTALLATION ■ REPAIRS**  
**■ MAINTENANCE**

## 0407 233 525

Monday-Friday 8am-5pm Email [shane@enrgs.com](mailto:shane@enrgs.com)

- HOME AND DOMESTIC
- NEW INSTALLATIONS
- ADDITIONS AND RENOVATIONS
- POWER AND LIGHTING
- LED DOWNLIGHTS
- SAFETY SWITCHES
- TESTING AND TAGGING
- FAULT FINDING
- AND MUCH MORE!

**24-HOUR  
 EMERGENCY  
 SERVICE  
 AVAILABLE**

\*Conditions apply

# THE ALEHOUSE

at WALLAROO MARINA



*The iconic and pre-eminent destination on Yorke Peninsula. Come and enjoy our amazing venue and take in the relaxing waterfront views!*



Bookings are encouraged

Bistro – Spacious Deck – Great Food – Local Seafood  
 Gaming Room – TAB – Functions – Live Entertainment  
 Sports Bar – Cold Drinks and Friendly Service

THINK OF THE PEOPLE WHO NEED YOUR SUPPORT. GAMBLE RESPONSIBLY. CALL GAMBLING HELP SERVICE 1800 858 858. WWW.GAMBLINGHELPONLINE.ORG.AU

**11 Heritage Drive, Wallaroo 8823 2488**  
[www.coopersalehouse.com.au](http://www.coopersalehouse.com.au)



# Stay and explore the wider Yorke Peninsula

## The Copper Coast is the perfect home base for exploring Yorke Peninsula.

Ample accommodation means there is something for everyone close to all the shopping, amenities and attractions the Copper Coast has to offer.

Just a short drive from your Copper Coast stay, you will find a multitude of options to fill your day.

Yorke Peninsula is home to cellar doors, a microdistillery and microbreweries, all close enough to be enjoyed on a single-day round trip from your accommodation.

Barley Stacks Wines, South Kilkerran, and Emoyeni Wines, Ardrossan, feature a range of unique wines including from locally grown grapes, and have cellar doors open for tastings.

Just north of Arthurton is Sunny Hill Distillery, the peninsula's first microdistillery producing award-winning vodka, gin, whisky, rum and delicious cocktails.

Further south, in Minlaton, you'll find Watsacowie Brewing Company and its delicious selection of crafted beverages.

You could also head to Port Broughton, perhaps calling into what has quickly become one of the area's most revered food spots, Karimi's Kitchen, at Alford on the way.

When you get to Port Broughton, enjoy the coastal lifestyle, local shops, art galleries, town jetty and children's play areas.

For those willing to travel a little further, the peninsula is brimming with possibilities.

Making a day trip to Dhilba Guuranda-Innes National Park to explore pristine coastal beauty at its finest, try your luck fishing from the glorious beaches, go on a marine safari even or even take to the waves — Dhilba Guuranda-Innes features South Australia's best surf breaks.

If you are keen to experience the peninsula's beauty on foot, the Walk the Yorke trail extends from the foreshores of the Copper Coast right around the entire Yorke Peninsula with spectacular views from start to finish.

If you're looking for a guide, The Coastal Way road trip is a glorious way to travel around the peninsula.

When you stay on the Copper Coast, you have the entire Yorke Peninsula within your reach.





# Take a trip to Dhilba-Guuranda Innes National Park

Dhilba Guuranda-Innes National Park is only a couple of hours' drive from the Copper Coast and is the perfect spot for a day trip.

The park celebrated its 50th anniversary in 2020 and also marked the start of a new chapter, with the commencement of a co-management agreement with the Nharangga traditional owners.

In recognition of this milestone, the park was renamed Dhilba Guuranda-Innes National Park.

Pack your walking shoes, because bushwalking is the perfect way to discover the park and trails range from 30-minute strolls to four-hour treks.

Dhilba Gurranda-Innes is home to breathtaking coastal scenery, numerous beautiful beaches, the historical Innes township, a chance to get up close and personal with native wildlife, including the growing population of brush-tailed bettongs released as part of the Marna Banggara project.

The park is also a surfer's dream, with swells to cater for all levels, and offers outstanding shore-based fishing.

Among the many attractions is the Ethel shipwreck, which rises from Ethel Beach and at certain times can be fully exposed in all its glory.

The park is accessible by two-wheel drive and those wishing to stay longer, or return in the future, can also camp.

Visiting Innes National Park requires a permit which can be obtained via [www.parks.sa.gov.au/parks/innes-national-park?satcMclD=04388935117](http://www.parks.sa.gov.au/parks/innes-national-park?satcMclD=04388935117) 096670740141789889325740611



Ethel Beach, Dhilba Guuranda-Innes National Park



karimi's kitchen

## TAKEAWAY

7 HIGH STREET-ALFORD

# Amazing food in Alford

Curries available  
all week

AUTHENTIC/HOUSE-MADE

Monday-Thursday 8am-5pm  
Friday 8am-6pm

**8824 2369**

**BARLEY STACKS WINES**

## Uniquely Yorke Peninsula

Cellar Door and Function Centre  
Open 7 days 10am-5pm

**8834 1258** | [barleystackswines.com](http://barleystackswines.com)

Drink responsibly

Come and enjoy our relaxed atmosphere and large range of drinks

**Open Thursday - Sunday 11am-6pm**  
Check online for extended holiday trading  
**8658 Upper Yorke Road, Arthurton**  
**Phone 0400 843 904**  
[www.sunnyhilldistillery.com.au](http://www.sunnyhilldistillery.com.au)

\*Drink responsibly  
Liquor Licence 57007817

# Copper Coast

# Calendar of Events



YP Field Days  
September 30 to  
October 2, 2025

## JANUARY

Australia Day Breakfast, Wallaroo January 26  
Variety Club Australia Day Breakfast, Moonta Bay January 26

## FEBRUARY

Yorke Valley Junior Basketball Carnival, Copper Coast February 17-18  
NYP Junior Tennis Carnival TBC  
Fringe Shows in the Copper Coast February 16-March 17

## MARCH

Moonta Show'n'Shine March 10  
Queen Square Markets, Moonta March 10  
Good Friday Ecumenical Service, Queen Square Moonta March 29

## APRIL

Yorke's Emporium TBC  
SA Masters Games, Copper Coast April 11 — 14  
Anzac Day April 25

## MAY

FLAME Festival May 24 — 26

## JULY

NAIDOC Week July 4 — 11  
KDNA Netball Carnival July 23

## AUGUST

Copper Coast Show August 17 — 18  
Vietnam Veterans Day August 18

## SEPTEMBER

Bowls Supa Series, Wallaroo/Moonta TBC  
Copper Coast Motorsports Show 'n' Shine TBC  
Copper Coast Motorsports 400 Sprints TBC  
Copper Coast Cycling Cup TBC

## OCTOBER

Moonta Open Gardens October 6 — 7  
Queen Square Markets, Moonta October 6  
Northbank Family Fishing Comp TBC

## NOVEMBER

Remembrance Day November 11  
Copper Coast Battle Dragons TBC  
Marina Challenge, Wallaroo

## DECEMBER

Moonta Christmas Pageant TBC  
Christmas in Kadina December 16  
Copper Coast NYE Fireworks, Wallaroo December 31

## THROUGHOUT THE YEAR

Parkrun, Kadina 8am every Saturday  
Kadina Rotary Markets last Saturday of each month  
Wallaroo Lions Markets second Saturday of each month (except June, July, August)

**COPPER COAST CORNISH FESTIVAL**

**SAVE THE DATE**  
12TH-18TH  
MAY 2025

Web: [www.kernewek.org](http://www.kernewek.org) Facebook: [kernewekcc](https://www.facebook.com/kernewekcc)  
Email: [kernewek@coppercoast.sa.gov.au](mailto:kernewek@coppercoast.sa.gov.au)

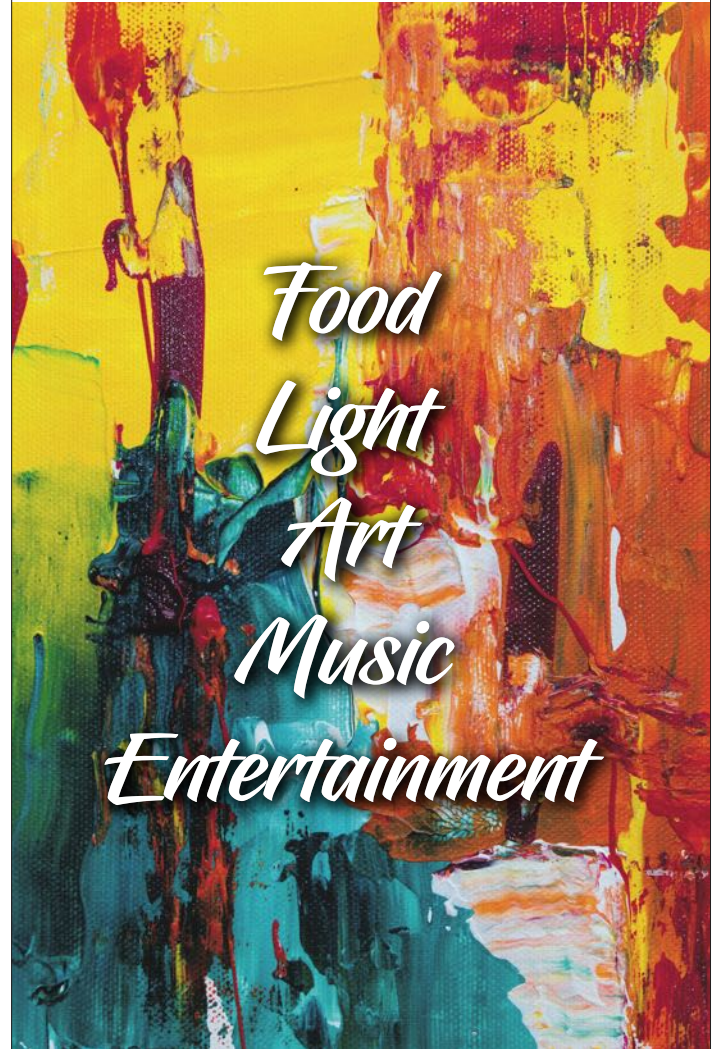
**Kadina Showgrounds**  
**SATURDAY-SUNDAY**  
**AUGUST 17-18, 2024**  
*Much to see — be there!*  
Contact 0474 720 716  
[kadinashow@bigpond.com](mailto:kadinashow@bigpond.com)



Copper Coast  
Cornish Festival  
May 12 to 18, 2025



Copper Coast Show  
August 17 and 18, 2024



## 24th - 26th May 2024

A three-day event showcasing local products and artisans throughout the Copper Coast.

Event and program details available  
[visitcoppercoast.com.au](http://visitcoppercoast.com.au)



### PUBLIC HOLIDAYS 2024

- New Year's Day Monday, January 1
- Australia Day Friday, January 26
- Adelaide Cup Day Monday, March 11
- Good Friday Friday, March 29
- Easter Saturday Sunday, March 30
- Easter Monday Monday, April 1
- Anzac Day Thursday, April 25
- King's Birthday Monday, June 10
- Labour Day Monday, October 7
- Christmas Eve Tuesday, December 24
- Christmas Day Wednesday, December 25
- Boxing Day/Proclamation Day Thursday, December 26

### SOUTH AUSTRALIAN SCHOOL TERMS

- Term 1 January 29 to April 12
- Term 2 April 29 to July 5
- Term 3 July 22 to September 27
- Term 4 October 14 to December 13

# SERVICES

**POLICE ASSISTANCE LINE 13 14 44  
IN AN EMERGENCY, CONTACT 000**

## BABY CHANGE FACILITIES

- **Ascot Cultural Centre**  
Graves Street, Kadina
- **Copper Coast Visitor Information Centre**  
50 Mines Road, Kadina
- **Victoria Square**  
Graves Street, Kadina
- **McDonald's restaurant**  
Forster Street, Kadina
- **John Terrace, Wallaroo**
- **Ellen Street, Moonta**

## BANKS AND ATMS

- **ANZ Bank**  
36 Graves Street, Kadina
- **BankSA**  
21 Frances Terrace, Kadina  
42 George Street, Moonta
- **Commonwealth Bank**  
34 Graves Street, Kadina
- **National Australia Bank**  
45 Graves Street, Kadina
- **Wallaroo (ATM only)**  
19 Owen Terrace

## CAR WASH

- **Kadina Car Wash** 11 Taylor Street, Kadina

## CHARGING STATIONS

### *Electric vehicle charging stations*

- **Wallaroo Holiday Park**  
Pamir Court, Wallaroo
- **Wallaroo Marina Apartments**  
Heritage Drive, Wallaroo

### *Mobility scooter recharging stations*

- **Kadina Community Library**  
Doswell Terrace, Kadina
- **Wallaroo Adventure Playground**  
John Terrace, Wallaroo
- **Wallaroo foreshore**  
Chatfield Terrace, Wallaroo
- **Smelters Trail Heritage Drive**  
Barbecue area, Wallaroo
- **Moonta Bay foreshore**  
Barbecue area, Moonta Bay
- **Queen Square rotunda**  
George Street, Moonta

## CHURCHES

- **Anglican** — Kadina, Moonta, Wallaroo
- **Australian Christian Churches** — Kadina
- **Baptist** — Wallaroo
- **Catholic** — Kadina, Wallaroo, Moonta
- **CRC Churches International** — Moonta
- **Crosslink Christian Network** — Kadina
- **Church of Christ** — Kadina
- **Lutheran** — Kadina
- **The Church of Jesus Christ of Latter-day Saints** — Kadina
- **The Salvation Army** — Kadina
- **Uniting** — Kadina, Wallaroo, Moonta, Moonta Mines

## COPPER COAST GALLERIES

- **Chatswood Art Studio** Moyle Street, Kadina
- **Ascot Community Art Exhibition Gallery**  
Ascot Theatre, Graves Street, Kadina
- **Moonta Gallery of the Arts** George Street, Moonta
- **Copper Coast Art Gallery** Robert Street, Moonta
- **Lonesome Valley Studio** Olive Parade, Kadina
- **Limestone Gallery** Anglican Church, Kadina
- **Salty Art Studio** Moonta

## DENTAL

- **Copper Coast Dental Kadina**  
Port Road, Kadina 8821 2099
- **Copper Coast Dental Wallaroo**  
Owen Terrace, Wallaroo 8823 3588
- **Moonta Dental**  
5 Majors Road, Moonta 8825 1116
- **National Dental Care**  
70 Graves Street, Kadina 8821 2899

## DOG PARKS

- **Kadina** Doswell Terrace
- **Moonta** Frances Terrace
- **Wallaroo** Heritage Drive

## FREE INTERNET

- **Wallaroo foreshore**
- **Moonta Bay foreshore**
- **Copper Coast Visitor Information Centre**  
50 Mines Road, Kadina
- **Kadina Community Library**  
1a Doswell Terrace, Kadina
- **Moonta Community Library**  
Blanche Terrace, Moonta
- **Wallaroo Library**  
9 John Terrace, Wallaroo

# SERVICES

## LAUNDROMATS/DRY CLEANERS

- **Kadina Craft and Sewing Centre (Dry Cleaners)**  
29 Graves Street, Kadina
- **YP Linen Services**  
31 Hughes Street, Wallaroo (open seven days)
- **Kadina Laundromat** Goyder Street, Kadina

## LIBRARIES

- **Kadina Community Library** Doswell Terrace 8828 1250
- **Moonta Community Library** Blanche Terrace 8825 1511
- **Wallaroo Library** 2 John Terrace 8823 2924

## MEDIA

The **Yorke Peninsula Country Times** newspaper is published in Kadina with news from all over Yorke Peninsula and is available every Tuesday afternoon in newsagencies, local supermarkets and other outlets. Alternatively, visit [ypct.com.au](http://ypct.com.au) to purchase the full version online.

**Gulf FM 89.3** is the Copper Coast's community radio station. For program information, visit [gulffm.com.au](http://gulffm.com.au)

## MEDICAL SERVICES

- **Kadina Medical Associates**  
77-79 Port Road, Kadina 8821 3133, after hours 8823 0200
- **Moonta Medical Clinic**  
Majors Road, Moonta 8825 2309
- **Owen Terrace Medical Practice**  
31 Owen Terrace, Wallaroo 8823 2002
- **Wallaroo Hospital**  
Ernest Terrace, Wallaroo 8823 0200

## OP SHOPS AND SECOND-HAND GOODS

- **Lifeline Wallaroo** Owen Terrace, Wallaroo
- **Wallaroo Uniting Church** Emu Street, Wallaroo
- **Triple B Cafe** Evans Road, Wallaroo
- **Wallaroo Treasures and Treats Cafe**  
Owen Terrace, Wallaroo
- **Quality Second-hand Goods** Jones Road, North Beach
- **Antiques and Collectables** Wildman Street, Wallaroo
- **Bits and Pieces Second-hand** Charles Terrace, Wallaroo
- **REVAMP Op Shop** Blyth Terrace, Moonta
- **Australian Red Cross** Moonta Ellen Street, Moonta
- **Lifeline Moonta** Ellen Street, Moonta
- **Annie's Shopping Opportunity**  
Corner Blanche and Milne Terraces, Moonta
- **Weetulta Old Wares** Spencer Highway, Weetulta
- **The Salvation Army** Port Road, Kadina
- **Kadina Christian Bookshop** Graves Street, Kadina
- **Kadina Kindy Shop** Digby Street, Kadina
- **Vinnies Kadina** Doswell Terrace, Kadina

## OP SHOPS AND SECOND-HAND GOODS

- **Rehome Op Shop** Copper Coast Highway, Kadina
- **ADRA Op Shop** Port Road, Kadina
- **Anglican Church Op Shop** Taylor Street, Kadina
- **Blue Bird Traders and Old Curiosity Shop**  
Graves Street, Kadina
- **Lutheran Church Op Shop** Ewing Street, Kadina

## PARKS

### Kadina

- **Victoria Square, Graves Street**  
Toilets, playground, electric barbecues
- **Newtown playground, Lawrence Street**  
Toilets, playground, electric barbecues
- **Apex Park, Rendell Street**  
Toilets, playground, electric barbecues
- **Copper Coast Indoor Play Centre, 50 Mines Road**  
Admission: under 12 months, free; 1-2 year olds, \$4; 3-10 year olds, \$6
- **Skate Park, Doswell Terrace**

### Moonta Bay

- **Moonta Bay foreshore reserve**  
Toilets, playground, electric barbecues
- **Moonta Bay foreshore**  
Splash Town, Bay Road

### Moonta

- **Polgreen Park, Bay Road**  
Toilets, playground, electric barbecues, children's bicycle tracks
- **Queen Square, George Street**  
Toilets, picnic areas
- **Victoria Park, Milne Terrace**  
Bush park with walking tracks
- **Skate Park, Verran Terrace**
- **McCauley Park, Frances Terrace**

### North Beach

- **Playground, Clayton Drive**  
Shaded playground, outdoor fitness equipment, basketball court and more
- **North Shores playground, Timaru Way**

### Port Hughes

- **Playground, West Terrace**  
Toilets, playground, electric barbecues, picnic areas

### Wallaroo

- **Adventure Playground, John Terrace**  
Toilets, adventure playground, electric barbecues
- **Davies Square, Wildman Street**  
Historic rotunda, picnic areas, electric barbecues
- **Sincock Square Reserve, Victoria Street**
- **Skate Park, Hughes Street**

# SERVICES

## PHARMACIES

- **Newbery Chemists**  
24 Graves Street, Kadina 8821 2055  
8 George Street, Moonta 8825 2063  
45 Owen Terrace, Wallaroo 8823 2524
- **Copper Coast Pharmacist Advice**  
77-79 Port Road, Kadina 8821 2600

## POST OFFICES

- **Kadina** 56 Graves Street
- **Moonta** 18 Ryan Street
- **Wallaroo** Shop 19, 2 Owen Terrace
- **Port Hughes** 1 Minnie Terrace

## PUBLIC TOILETS

For exact locations and facilities, visit [toiletmap.gov.au](http://toiletmap.gov.au).

- **Kadina:** Frances Terrace, Graves Street, Rendell Street, Lawrence Street, Mines Road (Visitor Information Centre).
- **Moonta, Moonta Bay, Port Hughes:** Ellen Street, George Street, Henry Street, Milne Terrace, Retallick Road, Caroline Street, Simms Cove Road, Bay Road (Splash Town Water Park), Port Hughes car park, Pryors Lane (Tourist Office).
- **Wallaroo:** Owen Terrace, Victoria Street, Spencer Highway, John Terrace, Heritage Drive, Jetty Road, Abraham Rydeberg Drive, Clayton Drive, Esplanade.

## RV-FRIENDLY PARKING

Parking is available at the following locations. Terms and conditions apply. Permits required. For more information, contact the Copper Coast Visitor Information Centre, 50 Mines Road, Kadina, on 8821 2333. RV-friendly parking is for self-contained motorhomes. Minimal to no services or facilities are available at these sites.

- **Kadina showgrounds, Mines Road**
- **Paskeville, East Terrace** (community sporting complex).
- **Wallaroo, Cornish Terrace** (former grain sampling yards, overnight stays only).
- **Moonta, corner of Blyth Terrace and Clayton Road**

## RV WASTE DUMP POINTS

- **Kadina**, corner of Mine Crescent and Doswell Terrace
- **Port Hughes**, Port Hughes Tourist Park, South Terrace
- **Wallaroo**, corner of May's Crossing and Victoria Street
- **Moonta**, Clayton Road

## SPORTS FACILITIES

### Kadina

- **Copper Coast Sport and Leisure Centre**  
Tennis courts, basketball courts, netball courts, football oval  
Doswell Terrace, Kadina
- **Kadina hockey fields** Drain Road, Kadina
- **Kadina golf course** Russack Road, Kadina

- **Kadina bowling green** Hallett Street, Kadina
- **Kadina croquet green** Hallett Street, Kadina
- **Wallaroo Mines bowling green**  
Lipson Avenue, Wallaroo Mines

### Moonta

- **Tennis, netball courts and football** Milne Terrace, Moonta
- **Moonta golf course** Milne Terrace, Moonta
- **Moonta bowling green** Blanche Terrace, Moonta
- **The Dunes golf course** St Andrews Drive, Port Hughes

### Wallaroo

- **Tennis, netball courts and football oval**  
Cornish Terrace, Wallaroo
- **Wallaroo golf course** Cornish Terrace, Wallaroo
- **Wallaroo Community Sports Club**  
Bowls, croquet – Cornish Terrace, Wallaroo

## TAXI SERVICES

- **Copper Triangle Taxis** 8821 3444
- **Moonta Passenger and Taxi Service** 0447 528 000
- **Wallaroo Bayside Taxis** 8823 2322

## VETERINARIANS

- **YP Vets** 20 Port Road, Kadina 8821 3350
- **Seaside Vet Surgery** 24 John Terrace, Wallaroo 8823 3233



## Copper Coast Visitor Information Centre

### The Farm Shed Museum and Tourism Centre

50 Mines Road, Kadina  
Free call: 1800 654 991  
Phone: (08) 8821 2333  
Email: [visit@coppercoast.sa.gov.au](mailto:visit@coppercoast.sa.gov.au)  
Web: [www.visitcoppercoast.com.au](http://www.visitcoppercoast.com.au)  
Facebook: [www.facebook.com/coppercoastVIC](http://www.facebook.com/coppercoastVIC)

### Moonta Tourist Office

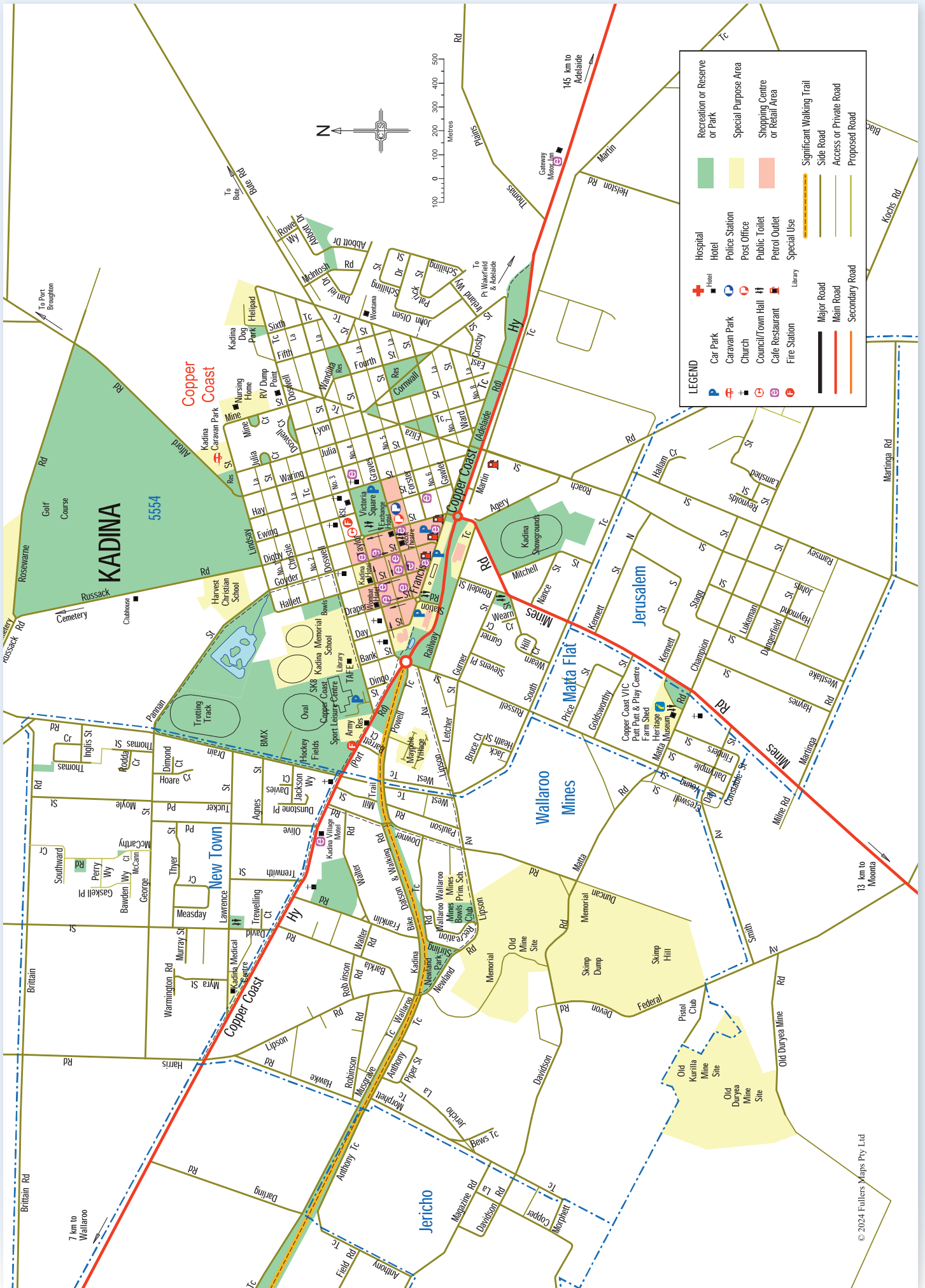
#### Old Railway Station

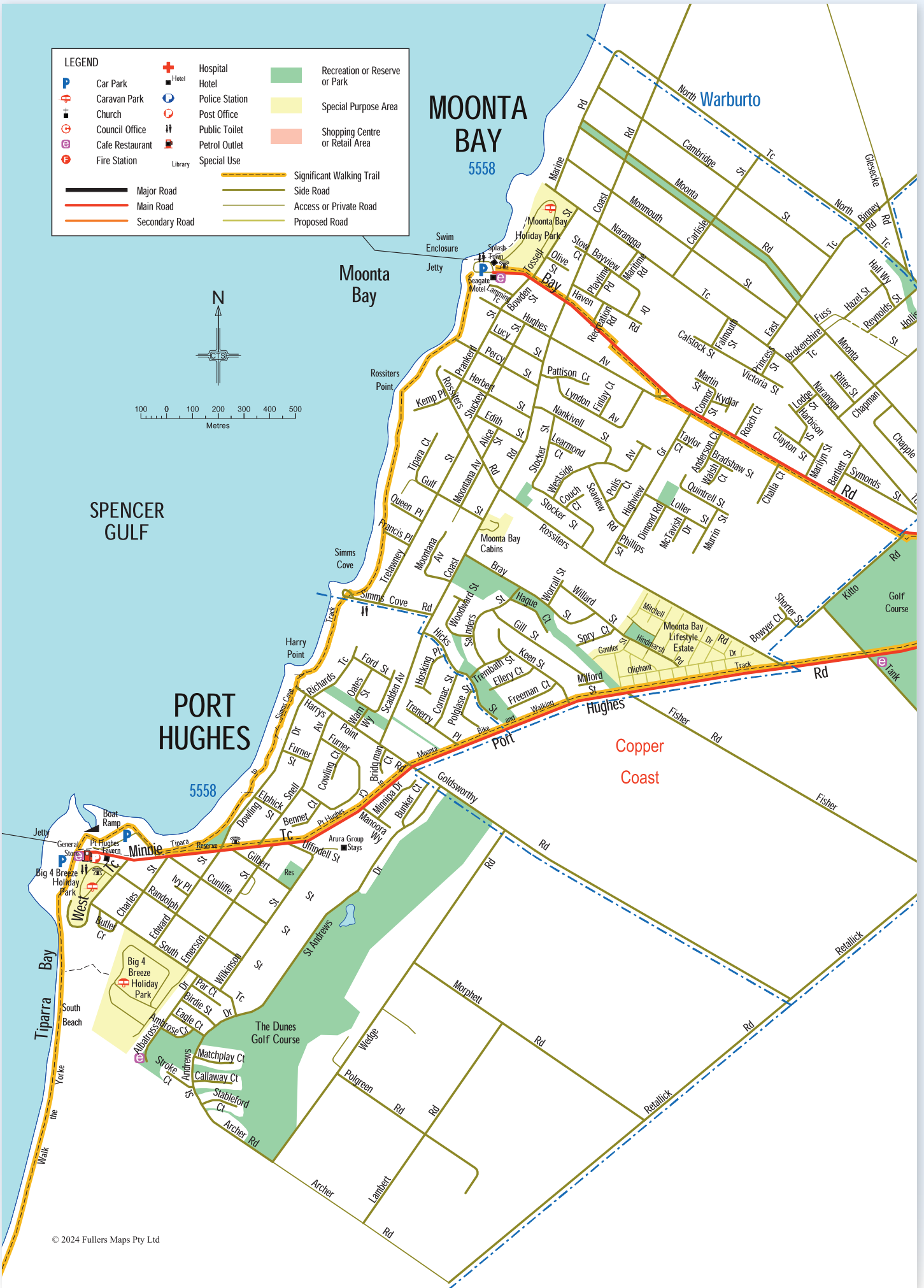
Blanche Terrace, Moonta  
Phone: 8825 1891

### Wallaroo Information Outlet

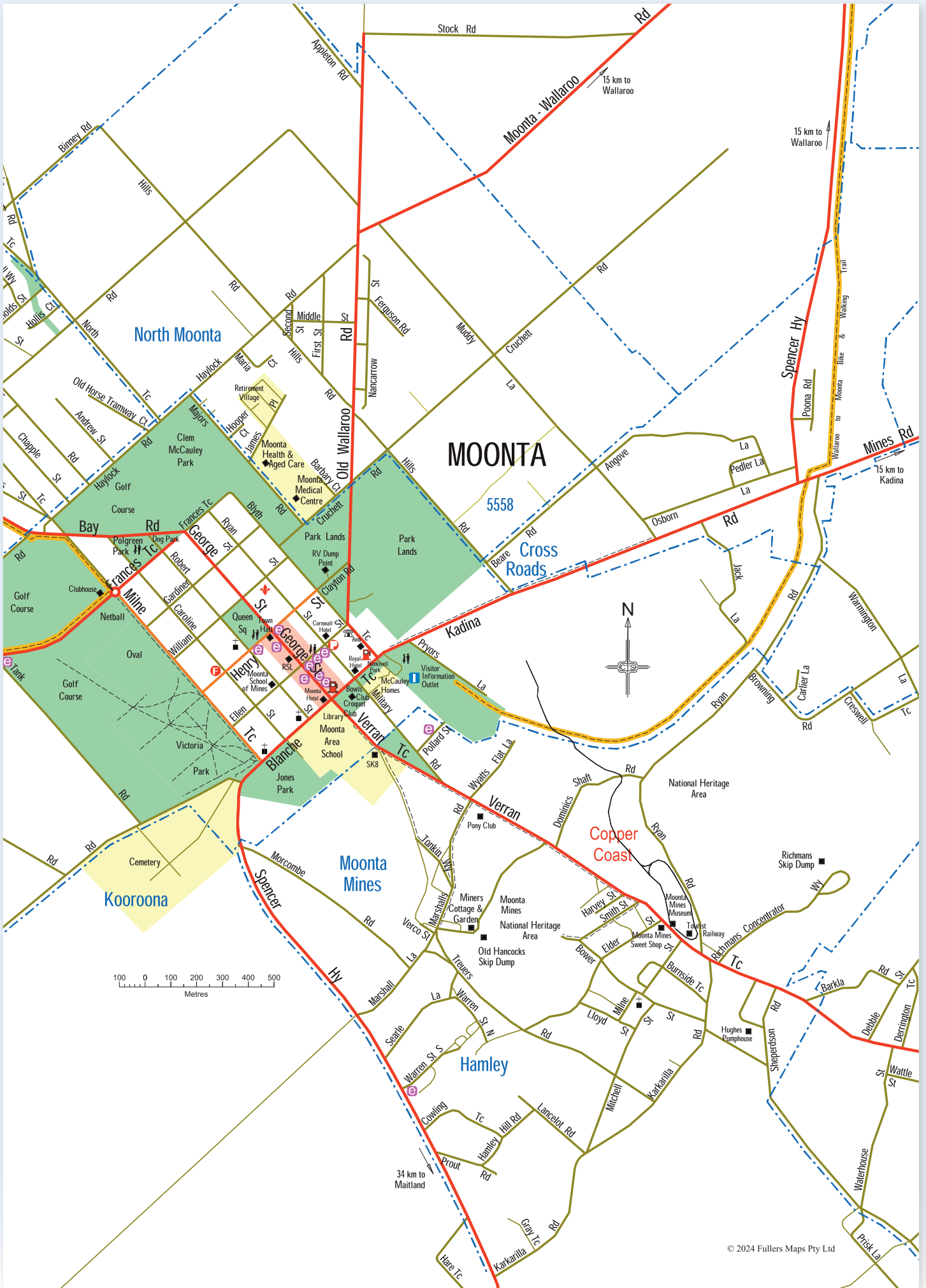
#### Wallaroo Heritage and Nautical Museum

Jetty Road, Wallaroo  
Phone: 8823 3015



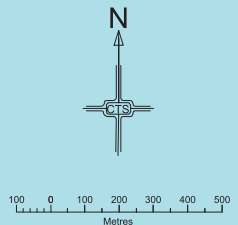


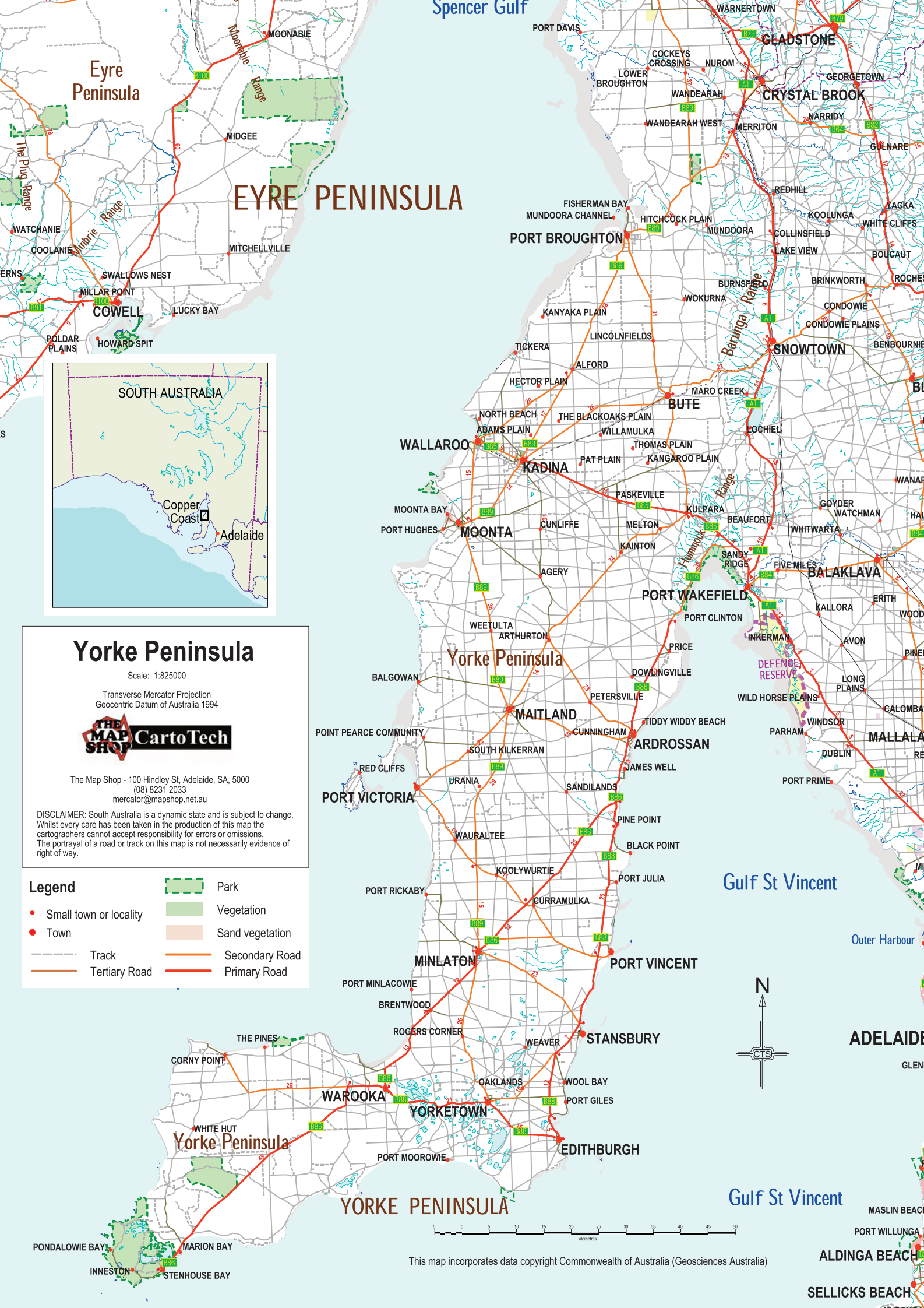




© 2024 Fullers Maps Pty Ltd

LEGEND			





# EYRE PENINSULA

# Yorke Peninsula

# YORKE PENINSULA

## Yorke Peninsula

Scale: 1:825000

Transverse Mercator Projection  
Geocentric Datum of Australia 1994



The Map Shop - 100 Hindley St, Adelaide, SA, 5000  
(08) 8231 2033  
mercator@mapshop.net.au

DISCLAIMER: South Australia is a dynamic state and is subject to change. Whilst every care has been taken in the production of this map the cartographers cannot accept responsibility for errors or omissions. The portrayal of a road or track on this map is not necessarily evidence of right of way.

### Legend

- Small town or locality
- Town
- Track
- Tertiary Road
- Park
- Vegetation
- Sand vegetation
- Secondary Road
- Primary Road



This map incorporates data copyright Commonwealth of Australia (Geosciences Australia)



# Copper Coast

## Visitor Information Centre

50 Mines Road, Kadina  
[visitcoppercoast.com.au](http://visitcoppercoast.com.au)

Phone (08) 8821 2333; 1800 654 991  
Email [visit@coppercoast.sa.gov.au](mailto:visit@coppercoast.sa.gov.au)

### Opening hours:

Monday-Friday 9am-5pm

Saturday, Sunday and Public Holidays 10am-4pm



*#Visitcoppercoast*

